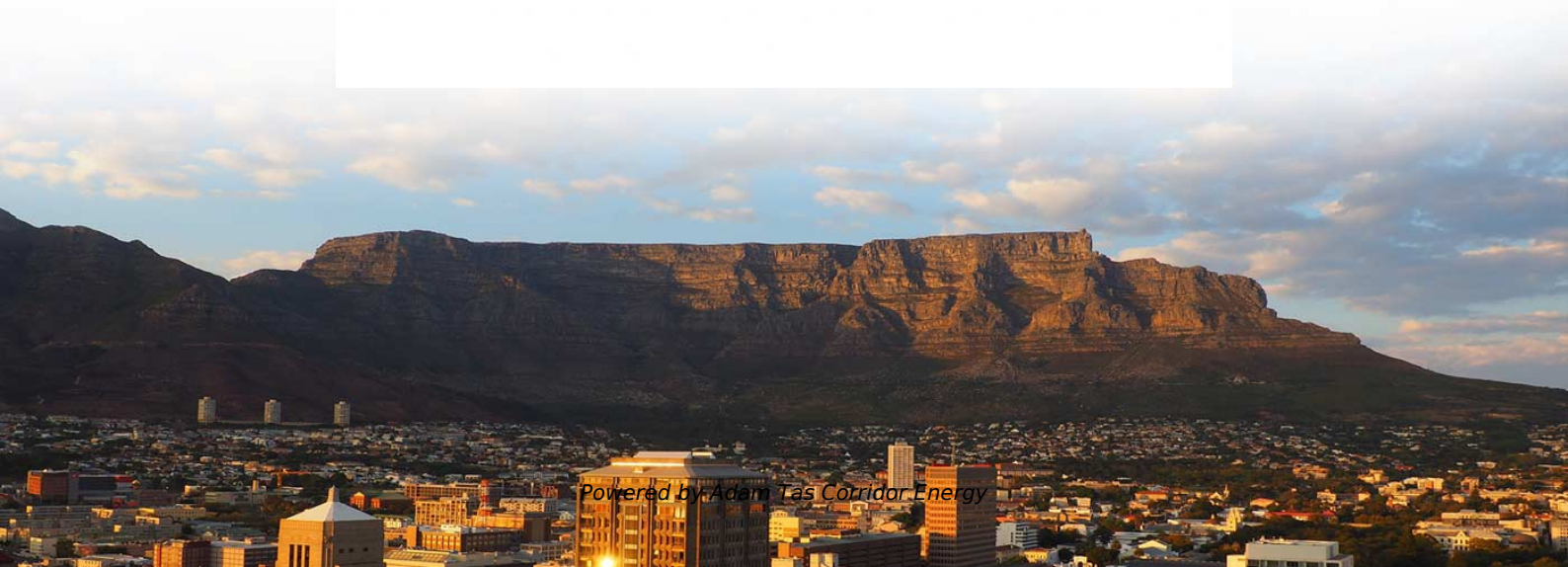




Adam Tas Corridor Energy

Secondary distribution box connected to primary distribution box





Overview

The secondary distribution system is connected to the primary distribution system and is responsible for distributing the electricity to the end users. It operates at a low voltage level, which is stepped down by the distribution transformers. Let's make an example for clarity: A newly constructed residential area introduces a 10kV power line to a substation. In the first step, electricity is distributed to substations from the generating stations through transmission lines by increasing the voltage level to reduce transmission.



Secondary distribution box connected to primary distribution box



The Meaning and Function of Primary, Secondary, and Tertiary

This explanation aims to clarify the roles and functions of primary, secondary, and tertiary distribution boxes, enhancing the understanding of these critical components in electrical distribution

Distribution Automation Handbook

3.14 Primary Distribution Substations A primary distribution substation is the connection point of a distribution system to a transmission or a sub-transmission network. Outgoing feeders from a



AC Distribution System , Primary distribution

Fig. 12.3 shows a typical secondary distribution system. The primary distribution circuit delivers power to various substations, called distribution substations. The

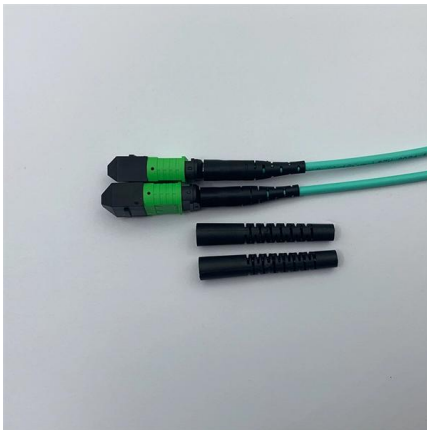


How to Wire a Home Distribution Box

The above mentioned electrical wiring accessories and protective devices are used to



control and distribute electric supply (safely to connected

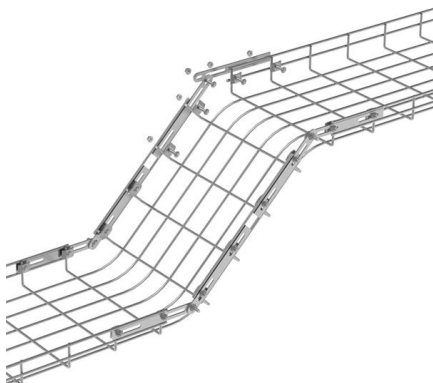


The Ultimate Guide to Distribution Box Types

Discover the key types of distribution boxes with NUOMAK's comprehensive guide. Learn about Main Distribution Boards (MDB), Consumer Units, Transfer

What are the primary and secondary distribution networks?

This system is divided into two main parts: primary and secondary distribution networks. Both parts work together to transfer electrical energy from



Slide 1

Selection of winding connections for distribution transformers requires knowledge of the characteristics of the primary system, and the type of secondary system to be supplied from the transformer(s)



Distribution Box Guide: Types, Components & Solutions

Understand distribution boxes (DB boxes) in 5 minutes. Learn about types, components, functions, and uses. Find the perfect DB box for your needs.



The Meaning and Function of Primary, Secondary, and Tertiary

Primary: The main distribution panel, supplies power from the transformer. Secondary: Intermediate panel, routes power to buildings or zones. Tertiary: Final distribution point for equipment or



Primary and Secondary Distribution Systems

This document provides an overview of primary and secondary distribution networks. It discusses how distribution systems begin at distribution substations and include



Distribution Box Wiring Steps

?Wiring and Binding? ?Wiring Direction?: Wiring between the main circuit breaker and each branch circuit breaker in the box generally goes on the left, and



SECTION 9: ELECTRICAL POWER DISTRIBUTION

Utilities may have some control over and access to the energy stored in electric vehicles attached to the grid.



Distribution Box: Types and Functions , Axis-Electricals

A distribution box houses all the contact breakers, earth leakage units, doorbells, and timers. The electrical power supply comes from the network to the building

How to Wire a Home Distribution Box

How to Wire a Home Distribution Box - Step-by-Step , Distribution DB box wiring diagram
Welcome to our channel! In this video, we'll walk you through the



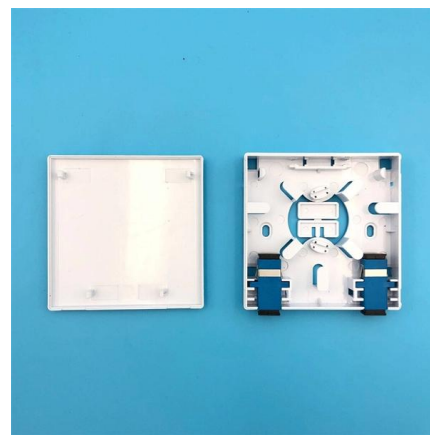


The Complete Guide to Distribution Box: Installation, Types & More

The primary purpose of a distribution box is to provide a safe and organized way to control electrical circuits. When an electrical fault occurs, such as an overload or short circuit, the protective

Primary vs. Secondary Distribution: What Are The Key Differences

Understand the critical distinctions between primary (11kV-33kV) and secondary (400V-1kV) distribution systems, including equipment, protection schemes, and application scenarios.



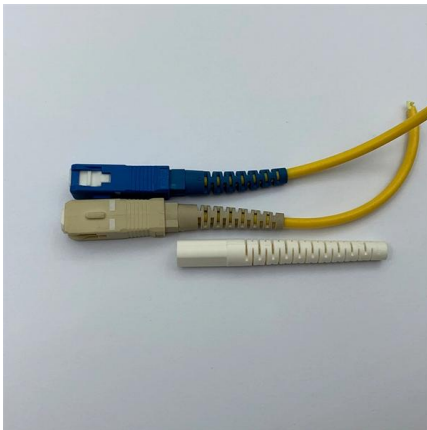
Serving area interface

In the United States, the connection back to the MDF is known as the F2 (secondary distribution cable) and/or the F1 (main feeder cable) pairs. SAIs are used in suburban and low-density urban areas,



Power Distribution Box Essentials: Functions, Types

Every distribution box is specially equipped to handle unique tasks, power clean-up and in an efficient manner in a wide range of settings. 5)

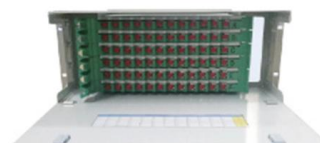


Size determination, installation method and wiring mode

The distribution box is the central hub of the home circuit and the general control of our daily power consumption. It is an indispensable electrical equipment. If there

The Primary and Secondary distribution in electrical

Understanding the fundamental distinction between Primary and Secondary distribution in electrical systems is pivotal for designing efficient and



Arrangements of LV Utility Distribution Networks (1)

The distribution is effectively carried out at medium voltage in a way, which again differs from standard European practices. The MV system is, in fact,



on video How to Wire a Home Distribution Box

How to Wire a Home Distribution Box - Step-by-Step , Distribution DB box wiring diagram
Welcome to our channel! In this video, we'll walk you through the



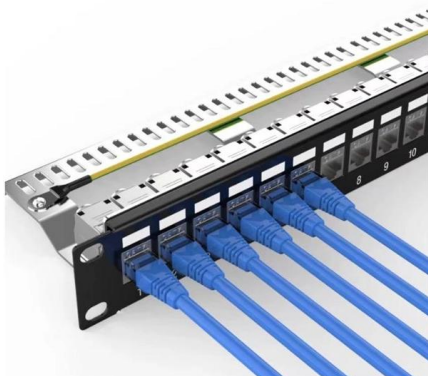
Difference between Primary Distribution and Secondary Distribution

What is a Secondary Distribution System? The secondary distribution system is connected to the primary distribution system and is responsible for distributing the electricity to the end users. It

Distribution Boxes: Types and Functions

Learn what an electrical distribution box (DB/distribution board) is, its main components (MCB/RCCB/RCBO, SPD, busbar) and common types.

SUPPORTS DIN RAIL INSTALLATION



Understanding the Electrical Sub Panel: A Clear

Anatomy of an Electrical Sub Panel An electrical sub panel, also known as a sub panel box or breaker box, is an essential component of an electrical system. It



Secondary LV/MV distribution substations in a nutshell

The installation comprises secondary distribution substation at the point of entry, with MV cables to supply subsidiary substations located



Electrical Distribution System Analysis Dr. Ganesh Kumbhar

(Refer Slide Time: 00:47) Then we have seen the structure of the distribution system, where we have classified the distribution system into two parts that is primary distribution system and secondary

Contact Us

For datasheets, pricing, or custom telecom energy solutions, please visit:
<https://koskolong.co.za>