



**Adam Tas Corridor Energy**

# **Seismic Bracing for Cable Trays in Mali**





## Seismic Bracing for Cable Trays in Mali

---



### **KINETICS(TM) Seismic & Wind Design Manual Section**

D9.0 - Electrical Distribution Systems Title  
Seismic Forces Acting On Cable Trays & Conduit  
Basic Primer for the restraint of Cable Trays & Conduit  
Pros and Cons of Struts versus Cables

### **Performance-based optimum seismic design of cable tray system**

The seismic performance levels of cable tray systems are presented according to current seismic design codes. A performance-based optimum seismic design procedure for cable tray



### **Performance-based optimum seismic design of cable tray system**

A performance-based optimum seismic design procedure for cable tray systems is given and verified by three studied cases.



### **Seismic analysis and design of electrical cable trays and support**

Most cable trays in nuclear power plants are classified as seismic category I components.



Current safety requirements dictate that all such components be adequately designed in order to

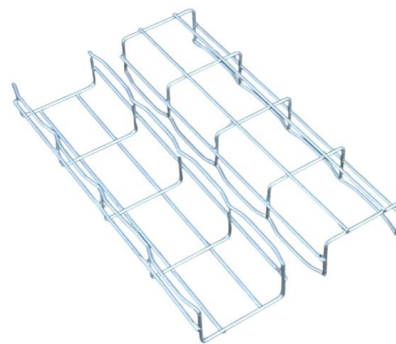


## Understanding the Seismic Resistance of Cable Trays

This article discusses the importance of seismic resistance for cable trays, detailing when seismic braces are necessary, the factors that affect seismic

## Seismic fragility analysis of suspended cable trays in civil buildings

This study investigates the seismic fragility of cable trays with two types of seismic supports in civil buildings by using the IDA method combined with full-scale shaking table tests.



## Cable Tray Checklist for High-Seismicity Projects

When those elements are coordinated early, cable tray systems can perform far more reliably under earthquake demands. Planning a project in a high-seismicity region? Contact our team



## Cable Tray and Conduit System Seismic Evaluation Guidelines

Rigid-mounted conduit and cable trays are inherently very stable and subject to minimal seismic amplification. A detailed dead load design review of these systems provides ample margin for

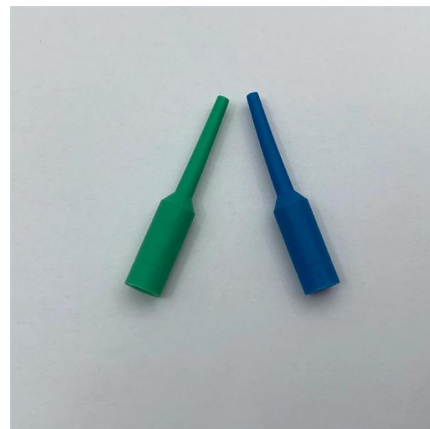


## Seismic Bracing Systems

Seismic bracing systems, are developed to prevent possible damages in the building installation, especially during natural disasters

## How to install Seismic Cable Bracing

Our seismic cable bracing systems are easy to install and require minimal maintenance, making them a cost-effective solution for any facility.



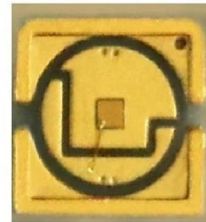
## Vogle Electric Generating Plant (VEGP) Units 3 and 4 Updated

The AP1000 cable tray system design requires no sprayed-on material for fire protection. Cable ties are provided at spacing greater than 4 feet, thereby permitting cable movement within the trays. The



## Cable Trays Seismic Design: Protecting Power in Quake

Learn how I approach Cable Trays Seismic Design to protect power and data in earthquake-prone areas. Understand key principles, methods, and



## Seismic Bracing Ensures Stability and Safety of Cable

Seismic Bracing - Enhancing System Stability and Seismic Resistance Seismic bracing, typically made of high-strength metal, is key component specifically

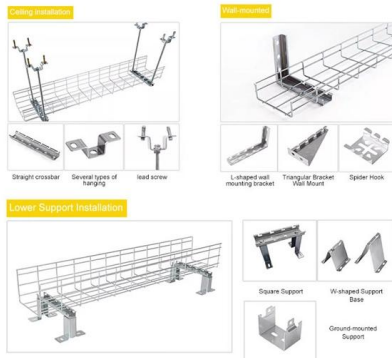
## Understanding Seismic Support for Electrical Installations

Explore the essential guidelines for seismic support in electrical installations, focusing on cable trays and their critical role in ensuring system safety during earthquakes. Learn about key spac





### INSTALLATION METHOD



## Seismic fragility analysis of suspended cable trays in civil buildings

This study aims to understand the seismic fragility of typical suspended cable trays in civil buildings through full-scale shaking table tests and numerical simulation. Based on the shaking table

## SEISMIC BRACING OF A DISTRIBUTED CABLE TRAY SYSTEM

The cable trays have diagonal bracing between layers of cable trays in the longitudinal direction using proprietary steel members and connected using bolts and clamps.



## Seismic and cable tray solution flyer

Eaton's B-Line series cable tray with TOLCO seismic bracing is the recommended total solution for your project. Our cable tray, bolted framing, and seismic bracing are approved as one system through

## Appendix 3F Cable Trays and Cable Tray Supports

This appendix provides the design criteria for seismic Category I cable trays and their supports. Seismic Category II cable trays and their supports are also designed utilizing the design criteria of this appendix.





## Seismic MEP Solutions , Eaton

Eaton's TOLCO seismic bracing solutions help protect people and non-structural components during an earthquake. For over 60 years, the mechanical, electrical, and fire protection trades have relied on



## Seismic Bracing Systems for Cable Trays Catalog

Explore seismic bracing solutions for cable trays. Catalog details wire rope/cable systems, specs, design for earthquake protection.



## Seismic cable bracing solution brochure

Tested by an independent lab and stamped by a Professional Engineer, the seismic cable kits are designed to brace non-structural equipment and distribution systems to help minimize damage from

## The shake on seismic bracing

Seismic bracing against the wrath of earthquakes is an increasing concern for today`s data-communications and telecommunications cable installer, and efforts



### More durable and robust

The outer layer is made of environmentally friendly PVC, which is soft and elastic. It can be stretched without damage, so you can use it with confidence.



### Installing Seismic Restraints for Electrical Equipment

Raceways/Conduits/Cable Trays: Covers the different ways to install raceways, conduits, and cable trays. Attachment Types: Gives instructions on installing equipment in different arrangements known

### Amazon :

?Wide Applications?The Galvanized Steel Strut Channel is used widely for Strut Channel Trolley Track,electric conduits, pipes,ceiling grilles,electric hoist mounting, hangers support, sandbags,



### Seismic and cable tray solution flyer

Our team of experts can help you select the best cable tray series for your application, as well as designing your seismic bracing layout to ensure it meets applicable building codes and standards.



## Contact Us

---

For datasheets, pricing, or custom telecom energy solutions, please visit:  
<https://koskolong.co.za>