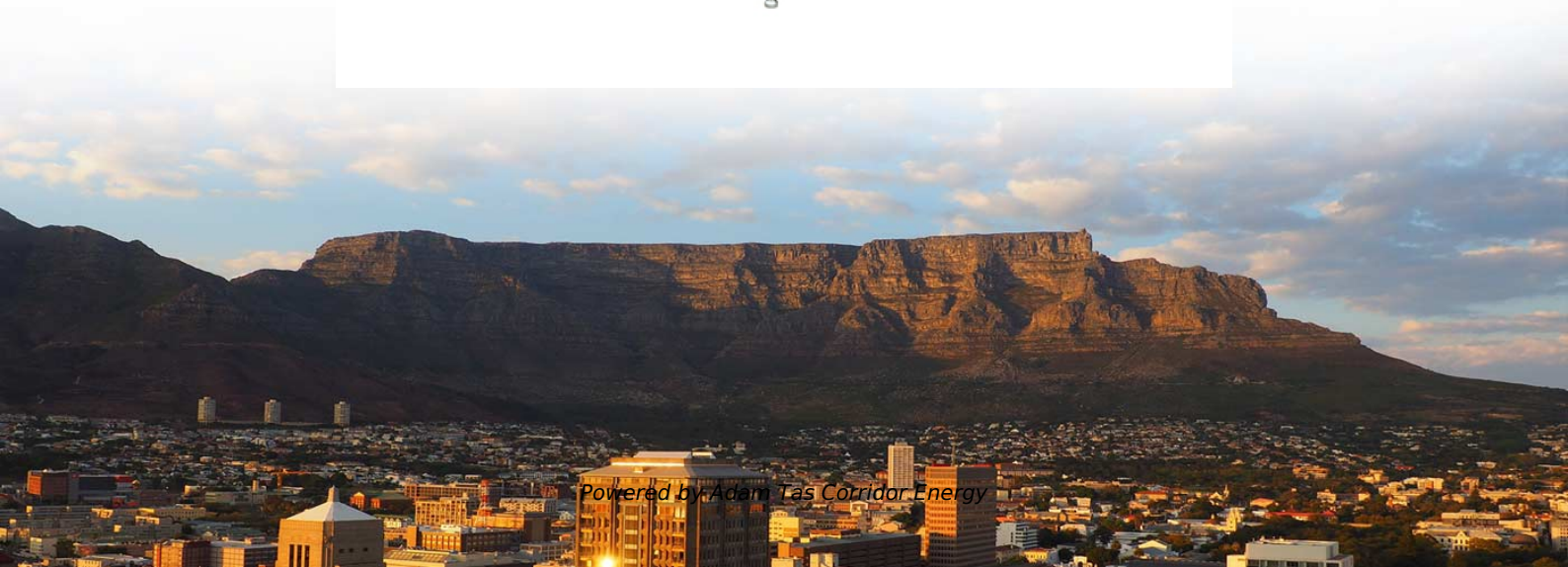




**Adam Tas Corridor Energy**

# **Selection Guide for QSFP28 Industrial Switches for Intelligent Computing Centers**





## Overview

---

This guide provides a systematic selection process to help you choose the right QSFP28 module every time. You will learn how to verify form factor compatibility, match fiber and distance requirements, validate switch compatibility, consider thermal constraints, and. Can I use a QSFP28 module in a QSFP-DD port?

Yes! QSFP-DD ports are designed to be backward compatible with QSFP28 modules. This allows you to upgrade your spine switches to 400G/800G now while still utilizing your existing 100G infrastructure. An engineer-focused, "just tell me what to choose" guide to transceiver selection with architecture, power budget, compatibility, and upgrade plan — designed for 25G/100G today and 400G/800G tomorrow. 25G is the new 10G; 100G (QSFP28) is the workhorse; design for migration plans to 400G/800G. The term QSFP28 stands for Quad Small Form-factor Pluggable 28, indicating that the module uses four electrical lanes, each operating at up to 25 Gbps, to achieve a total data.



## Selection Guide for QSFP28 Industrial Switches for Intelligent Comp

---

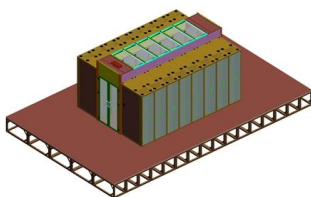


### QSFP28 Compatible Switches: Complete Guide by Vendor

QSFP28 compatible switches explained: Cisco, Arista, Juniper, and NVIDIA platforms. Learn breakout support, FEC settings, and compatibility verification.

### Wholesale Optical Transceivers Module , 100G

Shop high-speed optical transceivers from Unitekfiber. We offer 100% compatible 40G, 100G, and 400G QSFP-DD modules for data centers. Expert technical



### Understanding QSFP Switches: A Comprehensive

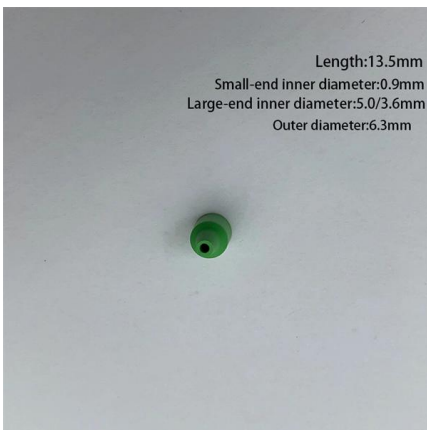
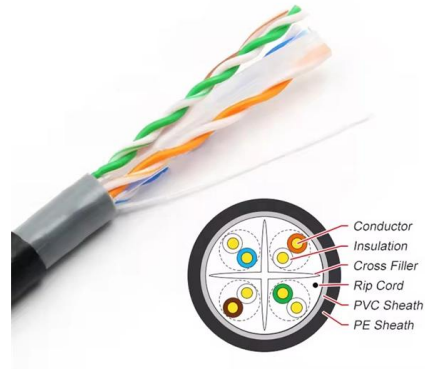
Explore the latest QSFP switches for modern network solutions with this comprehensive guide. Learn about port configurations, features, and more.

### Customized N8560-32C, 32-Port Ethernet L3 Data Center Switch, 32

The N8560-32C provides line-rate L3 switching across the 32x QSFP28 ports, and each QSFP28



port can be configured as 40/100GbE, or as 4x 10/25GbE or 2x 50GbE via breakout cables. The N8560



## The Ultimate Guide to Cisco QSFP28 Transceiver Modules for 100G

Discover the wide range of high-density and low-power 100G Ethernet connectivity options offered by Cisco's QSFP28 transceiver modules for data center and high-performance computing

## 100G QSFP28 Applications, Use Cases and Deployment Scenarios

Discover where and why 100G QSFP28 is widely deployed, covering data center, cloud, DCI, carrier, and AI network applications with practical deployment insights.



## Two-Port 40

This user's guide also shows test results for the specifications of 40-GbE nPPI and SFF8431. The experiments in this report demonstrate the ability of the DS280R810 to provide excellent signal



## How to Choose Between SFP, SFP+, SFP28 and QSFP Modules

SFP vs SFP+ vs SFP28 vs QSFP module selection guide. Compare speeds, form factors, compatibility, and choose the right module for ISP networks.



## SFP vs SFP28 vs QSFP28 vs QSFP-DD/OSFP: 2026

A 2026-ready, engineer-focused guide comparing SFP, SFP28, QSFP28, QSFP-DD and OSFP transceivers. Learn decision rules, deployment

## QSFP28 Module Types: Selection Guide for 100G Networks

QSFP28 module types explained: SR4, LR4, CWDM4, ER4, PSM4, and emerging single-lambda options. Learn how to choose the right 100G transceiver.



## Complete Guide to Pluggable Optical Transceivers -

What are Pluggable Optical Transceivers? Pluggable optical transceivers are compact, hot-swappable network interface modules that serve



## 100G QSFP28 Selection Guide

By carefully considering these six aspects, you can make an informed decision when selecting a 100G QSFP28 module, ensuring that it meets your performance, compatibility, and



## HPE Networking Comware Switch Series 5720

Moreover, these switches support HPE Intelligent Management Center (IMC), which delivers a consistent network manageability experience. Through centralized configuration, compliance, policy

## The Ultimate Guide to SFP, SFP+, SFP28, QSFP+, and QSFP28:

This guide decodes critical distinctions between SFP, SFP+, SFP28, QSFP+, and QSFP28 modules--covering form factors, channel architectures (single vs. quad), and performance





## FS 100G QSFP28 Selection Guide

FS 100G QSFP28 transceivers offer our clients a wide variety of high-density and low-power 100 Gigabit Ethernet connectivity options for data center, campus networks, high-performance



## 100 Gigabit Ethernet QSFP28 Transceivers: Performance, Cost, and

Explore 100 gigabit ethernet QSFP28 transceivers with detailed specs, real-world deployments, cost analysis, and expert selection tips for high-performance networks.

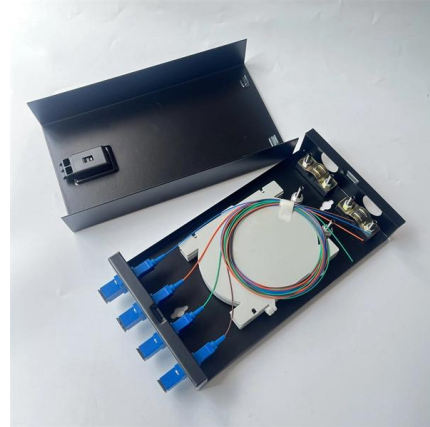


## How to Choose QSFP28: Complete 100G Selection Guide

Learn how to choose QSFP28 modules with confidence. Covers fiber matching, distance, switch compatibility, power budgets, and common selection mistakes.

## SFP vs SFP+ vs QSFP28 vs QSFP-DD: 2026 Optical

SFP vs SFP+ vs QSFP28 vs QSFP-DD: Master optical transceiver selection for 1G to 800G AI networks with our lab-verified guide.



## Guide to QSFP28 Transceivers for 100G Data Center

Guide to QSFP28 Transceivers for 100G Data Center Connectivity Using standard transceivers and cables is the most straightforward way to upgrade to 100G



## Compatible SFP/SFP28/QSFP/QSFP28 for Cisco Nexus

The Cisco Nexus 9200 is a good fit for data centers. Read this article to find compatible SFP/SFP28/QSFP/QSFP28 transceivers.



## 100G Optical Module Selection Guide: Advantages and Types of QSFP28

Explore the QSFP28 100G optical module, a vital component for high-speed network connections. Discover its unique features, advantages, and various types to meet diverse





## 1234

H3C S6850 Series Data Center Switches Product overview H3C S6850 high-density intelligent switch series is developed for data centers and cloud computing networks. It provides powerful hardware



## Unveiling the Future of Networking: HPE Aruba 100G QSFP28

Discover the latest in networking technology with HPE Aruba 100G QSFP28 Transceivers. Find out more about features, specifications, and compatibility.

## A Complete Guide to Selecting 100G QSFP28 Optical

Choosing QSFP28 optical transceivers that fit your system helps your network work well and keeps your money safe. This definitive guide cuts through



## 100G QSFP28 Applications, Use Cases and Deployment Scenarios

Selecting the right 100G QSFP28 transceiver depends on transmission distance, network architecture, cabling preferences, and cost considerations. Different application scenarios place very different



## How to Choose QSFP28: Complete 100G Selection Guide

This guide provides a systematic selection process to help you choose the right QSFP28 module every time. You will learn how to verify form factor compatibility, match fiber and distance



## Industrial Ethernet Switches Selection Guide

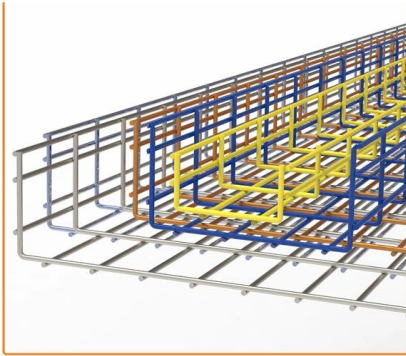
This industrial Ethernet Switch Selection Guide is a selection guide that highlights key issues, such as form factor compatibility, match fiber and distance, designed to help organizations make informed choices when selecting industrial switches. How best to evaluate both



## Power and sensing

Our extensive portfolio spans power, connectivity, radio frequency, and sensor system technologies, enabling next-generation applications across data centers, smart homes, consumer electronics,





## **Models, specifications, and compatibility**

See Splitting of QSFP+, QSFP28 and QSFP56 optics for more information. The following optical breakout cables can be used with 100G SR4 to split into 4x 25G SR compatible streams.

## **Contact Us**

---

For datasheets, pricing, or custom telecom energy solutions, please visit:  
<https://koskolong.co.za>