



**Adam Tas Corridor Energy**

# **Selection Requirements for Distribution Boxes and Cable Trays**





## Selection Requirements for Distribution Boxes and Cable Trays

---

### Installation Of Cable In Cable Trays: NEC, Safety



Installation of Cable in Cable Trays ensures proper routing, cable management, NEC compliance, grounding, fire safety, and load capacity.

### Best Practice Guide to Cable Ladder and Cable Tray Systems

This publication is intended as a practical guide for the proper and safe\* installation of cable ladder systems, cable tray systems, channel support systems and associated supports.



### How to Select the Right Cable Tray for Your Project

Cable trays are integral support systems for the safe, efficient transport of electrical and communications wiring. Choosing the right cable tray can seem complex, but



## CABLE

Cable ladder is more commonly used where heavier cables need to be carried, but is more expensive. Apart from the choice between solid



or perforated cable tray and wire basket, as  
Rendell



### Cable Tray SHIB NAL

Cable trays are not raceways, but they are treated as a structural component of a facility's electrical system. Cable trays are a part of a planned cable management system to support, route, protect and

### IEEE 525-2007\_accepted

IEEE-SA Standards Board Abstract: The design, installation, and protection of wire and cable systems in substations are covered in this guide, with the objective of minimizing cable failures and their



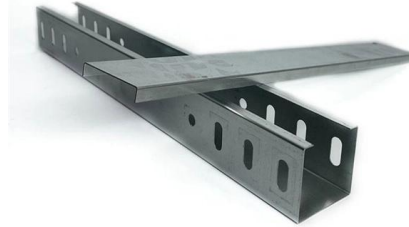
### How to Select the Right Electric Cable Tray for Your Application

Additionally, opting for a ladder cable tray design would ensure proper ventilation and ease of maintenance, making it ideal for the facility's complex cable management needs. Conclusion



## **Cable Tray Technical Guide A practical guide to product selection and**

Cable tray length is selected based on the load to be supported, the distance between the supports (also referred to as the span), and handling and installation constraints.



## **Selecting Cable Trays: A Complete Guide for Cable**

In this guide, I'll walk you through everything you need to know about choosing the right cable trays for your cables. Whether you're dealing with power

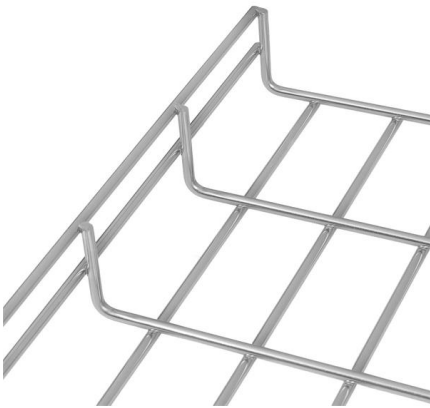
## **Guide to cable support systems**

This chapter deals with the correct dimensioning and the final selection of a cable support system, depending on the application, according to various influencing factors, such as cable volume, cable



## **Best Practice Guide to Cable Ladder and Cable Tray Systems**

This guide covers cable ladder systems, cable tray systems, channel support systems and associated supports intended for the support and accommodation of cables and possibly other electrical



## 100+ Essential Questions Answered About Cable Trays:

Discover over 100 expert answers about cable trays, covering key topics like material selection, load capacity, installation methods, and maintenance.



## RECOMMENDED SPECIFICATIONS OF JUNCTION BOX AND CABLE TRAY

The design standard for junction boxes and cable trays in the offshore projects is based on applicable industry standards, regulations, and classification requirements.



## Cable Tray Systems: Requirements and Best Practices

This article explains the main requirements and good practices for cable tray systems, including tray types, materials, loading, supports, bonding, cable selection, and installation details.





## ITER Cabling Handbook

All PIC cable trays shall be equipped with metallic cover, whilst non-PIC cable trays not required cover from safety point of view. The Non-PIC sensitive trays are covered for Electromagnetic compatibility

## Codes and Standards , Cable Tray Institute

This standard specifies the requirements for nonmetallic cable trays and associated fittings designed for use in accordance with the rules of the Canadian Electrical Code (CEC) Part 1, and the National

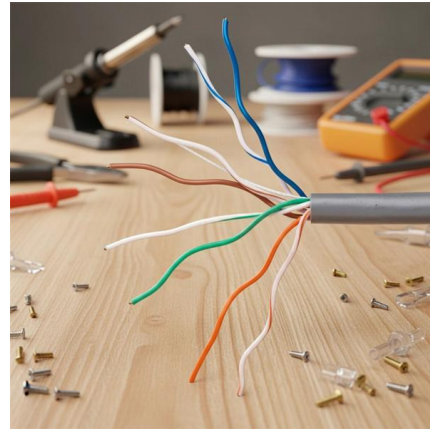


## Conduit, trunking and cable trays

and installation requirements 7.4 Conduit, trunking and cable trays connection point or ceiling rose and a Luminaire, provided that provision is made for future access and maintenance. In addition, the use of

## Ultimate Guide to Cable Tray Selection - Types,

Learn how to choose the best cable tray system for your needs. Explore types, materials, installation tips, and NEC compliance in this expert guide.



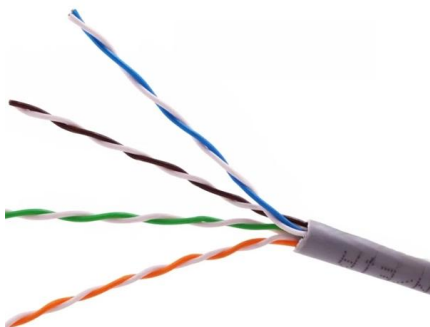
## 2005

**INTRODUCTION** The B-Line Cable Tray Manual was produced by B-Line's technical staff. B-Line has recognized the need for a complete cable tray reference source for electrical engineers and



## Compliance Requirements for Instrument Cable Trays

Installing instrument cable trays properly and in compliance with relevant standards is crucial to ensure safety, functionality, and durability. Below is a detailed guide



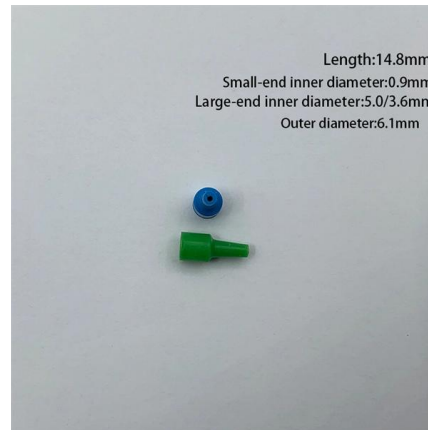
## B-Line series Cable Tray Design Considerations

Our Cable Tray Design Considerations Guide details key factors to consider when designing cable tray systems for industrial and commercial applications. It also demonstrates how Eaton's solutions and



## GUIDE CABLE TRAYS TECHNICAL

Specifies requirements for metal cable trays and associated fittings designed for use in accordance with the rules of Canadian Electrical Code, Part I and the National Electrical Code®



## Cable Tray Technical Guide A practical guide to product selection and

A practical guide to product selection and installation This guide for engineers and installers has been developed by ABB as a practical reference regarding cable tray characteristics, installation, and

## Cable Trays Selection Guide: Types, Features,

Cable trays are components of support systems for power and communications cables and wires. A cable tray system supports and protects both power and



## Proper Cable Tray Sizing for Efficient Installations

Proper cable tray sizing is critical for the efficient and safe management of electrical wiring in industrial, commercial, and residential



## Contact Us

---

For datasheets, pricing, or custom telecom energy solutions, please visit:  
<https://koskolong.co.za>