



Adam Tas Corridor Energy

Selection of Dedicated Handheld Light Sources for Backbone Networks





Selection of Dedicated Handheld Light Sources for Backbone Network

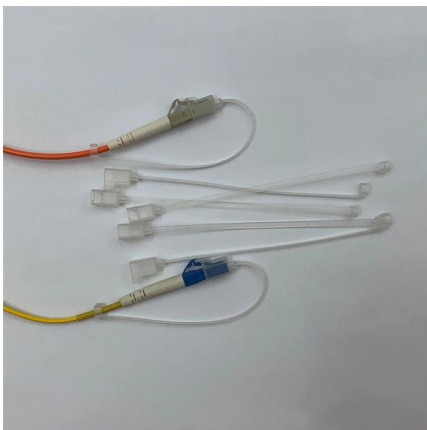


Fluke Networks SFSINGLEMODESOURCE Handheld

Fluke Networks Handheld Optical Light Source (1310/1550nm) with 2.5mm SC/UPC Connector

OLS-34/35/36/37/38 Handheld Light Sources VIAVI Solutions

They offer a dedicated and cost-optimized solution for testing and troubleshooting optical fibers in the field. All sources are equipped with Auto-I and Multi-I functions compatible with any Viavi Solutions



Fibershot Handheld Optical Light Source

Fibershot offers a full range of light sources for testing single-mode and/or multimode fiber networks in conjunction with an Optical Power Meter. A typical Laser Source transmits constant wavelengths in

ST815 Fiber Optic Equipments 1310/1550nm Handheld Fiber Optical

It supplies high performance laser source for



field test and lab project development. With features of durable structure, large LCD display with backlight and friendly operation interface, the ST815



GAOTek Handheld Fiber Optic Light Source

This Handheld fiber optic light source is an easy-to-use optical light source which offers high accuracy and is used to test single and multi-mode optical fibers by



Fiber Optic Light Source , Fiber Light Tester

Choose from a variety of handheld fiber optic light source testers that are rugged and portable for everyday use by fiber optic technicians.



Handheld Light Sources

Elevate your workflow with the Handheld Light Sources - Low Poly / Stylized asset from Veresen. Find this & other Props options on the Unity Asset



An evaluation tool for backbone extraction techniques in weighted

This paper introduces netbone, a Python package designed for assessing the performance of backbone extraction techniques in weighted networks.



Design methodology for WDM backbone networks using FWM-aware

Abstract The problem of lightpath topology design (LTD) and traffic routing over the lightpaths for wavelength-routed optical backbone networks has been investigated extensively in the

Fluke Networks SFMULTIMODESOURCE Handheld Optical Light

SimpliFiber Pro LED multimode laser sources retain the familiar intuitive four-button functionality from the popular workhorse SimpliFiber line, while incorporating additional features that make fibre testing



Fiber Optic Handheld light source for Multimode fiber

The L-com FOTM-OLS-MM Fiber Optic Handheld Light Source is designed for multimode fiber testing, troubleshooting, and installation applications. The L-com



PointPillars Backbone Type Selection for Fast and Accurate

In this paper, we present the results of experiments on the impact of backbone selection of a deep convolutional neural network on detection accuracy and computation speed. We chose the



11. Backbone Networks, MANs, and WANs

Backbone networks are operated by large telecommunications companies, internet service providers, and other organizations, and provide the high-speed data links

PointPillars Backbone Type Selection For Fast and

In this paper, we present the results of experiments on the impact of backbone selection of a deep convolutional neural network on detection accuracy





LDLS Laser-Driven Light Sources Selection Guide

Laser-Driven Light Sources Energetiq has developed a revolutionary single-light source technology called the Laser-Driven Light Source (LDLSTM) that enables extreme high brightness over a broad

Handheld LED & Laser Light Sources

Precise, reliable and high power FP & DFB laser light sources for single mode & multimode testing applications. With adapters for FC, SC, ST, LC and more.



Handheld Light Source optical light source

"ON/OFF" Key: Press to turn the Handheld Light Source Light On or Off. "Wave" key: For wavelength selection "Mode" key: Modulation control:



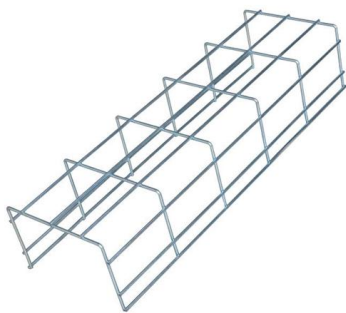
LSKNet: A Foundation Lightweight Backbone for Remote Sensing

Remote sensing images pose distinct challenges for downstream tasks due to their inherent complexity. While a considerable amount of research has been dedicated to remote sensing



FlowScout® OLS8 Optical Light Source

Built on the legacy of AFL/Noyes OLS series optical light sources, the FlowScout OLS8 provides a stable and accurate light source for use in enterprise LAN, data center, PON, and broadband networks.



Handheld Light Sources

SmartClass(TM) Fiber OLS-85 handheld light source is a professional, versatile, and compact instrument used for fiber-optic network qualification and certification.



Backbone Network Architectures for IP Optical Networking

Providers and network operators worldwide to investigate architectural alternatives for cost effective, reliable, scalable and flexible multi-terabit IP backbones. In this paper, several overlay, service and



alternate light sources intl dd

The kit consists of handheld, machined-aluminum, and self-contained light sources--each operating at or very near the individual light frequencies indicated on each light (395-625nm). A white



12 Best Portable LED Lighting Kits for Photography

Best portable lighting kit for photography 2026, based on specs and comparisons. Top picks: NEEWER 13" leads, GVM 2 Pack excels on battery. See

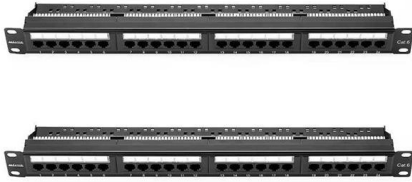
Light weight approach for secure backbone construction for MANETs

Abstract MANET is a self-organized and infrastructure-free network. Therefore, the use of Virtual Backbone Network is becoming popular nowadays because it provides stability to MANETs.



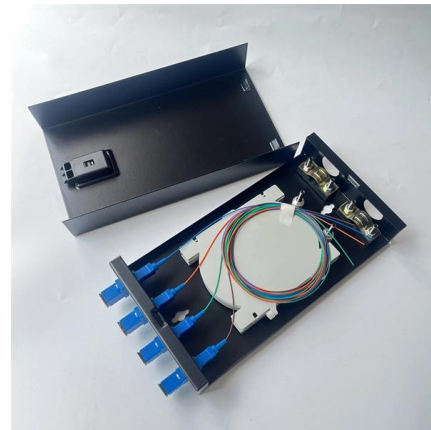
IES-Backbone: An Interactive Edge Selection Based

We proposed a backbone method based on interactive edge selection (IES-Backbone) to solve two problems for small world network visualization that



High-Capacity Backbone Networks and Multilayer Integrated

Abstract Exponentially increasing communications traffic and the fast-growing popularity of cloud services is putting tremendous stress on backbone networks, forcing telecom operators to boost the



Contact Us

For datasheets, pricing, or custom telecom energy solutions, please visit:
<https://koskolong.co.za>