



Adam Tas Corridor Energy

Service life of communication towers





Overview

Communication towers, as the core infrastructure of modern communications networks, typically have a lifespan of 20-50 years, depending on design, materials, environment, and maintenance. Telecom tower lifecycle management is a comprehensive approach to managing a tower asset. Calculating the life cycle of a telecom asset involves determining the time period from the acquisition of the asset to its end of life, which can include factors such as installation, operational phases, maintenance, and eventual decommissioning. Wind loads are crucial in the communication towers design since they are tall and slender. While existing research has focused on structural optimization and technological advancements, few studies address cost-related issues across various.



Service life of communication towers

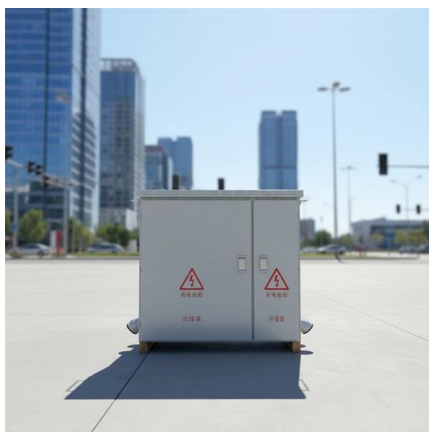


Life cycle cost of communication towers: identification and

The life cycle of communication towers is divided into five phases: planning, service procurement, design, construction, and O& M. Procurement typically occurs before the design phase

Understanding Telecommunication Towers

Telecommunication towers are the backbone of modern communication networks, providing the infrastructure necessary for wireless



How Long does A Galvanized Monopole Telecom Tower

The lifespan of a galvanized monopole telecom tower can vary depending on several factors, including the quality of materials used, the

Mobile Cell Towers: Powering Modern Communication

Discover how mobile cell towers are crucial components of modern telecommunication



infrastructure, and vital in today's digital age.



Communication Towers

Prior to the 1980s, communication and broadcast tower erection, servicing and maintenance was a very small and highly specialized industry. Over the past 30 years, the growing demand for wireless and

Why Comm Towers Need Routine Maintenance

Learn essential insights for tower operators on why communication towers require regular maintenance for safety, compliance, and optimal performance.



Metallurgical analysis of the collapse of a telecommunication tower

The present case of interest here is about the collapse of a telecommunication tower in a public institution. In this brief, the standard material specifications for a communication tower are first



How Long Is The Lifespan Of a Communication Tower?

Communication towers, as the core infrastructure of modern communications networks, typically have a lifespan of 20-50 years, depending on design, materials, environment, and maintenance.



What is a Communication Tower? Exploring Its Importance

What is a communication tower? Get insights into its role in transmitting signals for mobile, radio, and internet networks.

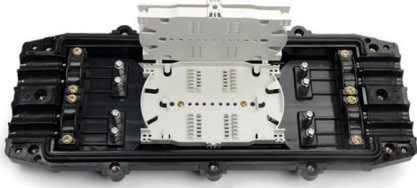
Communication tower infrastructure: Explaining the 'Gs'

Communication tower infrastructure: Explaining the 'Gs' that are changing communications After years of cable broadband, is 5G set to change everything



Telecom Tower Market Size And Projection

In today's hyperconnected world, telecom towers are the backbone of communication infrastructure, supporting everything from mobile connectivity to wireless internet services. As global



Towards greener telecommunication towers: A framework for "LEED

An ever-increasing number of telecommunication towers may have negative impacts on the environment because of the use of diesel, not environmentally friendly materials or the waves emitted to the



Calculating the life cycle of a telecom asset

Calculating the life cycle of a telecom asset involves determining the time period from the acquisition of the asset to its end of life, which can include factors such as installation,

The Professional Guide to Tower Maintenance

When telecommunication towers fail, the cause is often delayed or neglected maintenance that allows preventable issues to reach a breaking point.





Metallurgical analysis of the collapse of a telecommunication tower

In this brief, the standard material specifications for a communication tower are first reviewed, followed by a documentary on the collapsed tower, to present the glaring contrasts.

A Guide to Telecom Tower Lifecycle Management

An expert guide to telecom tower lifecycle management. Explore every phase from planning and construction to maintenance, upgrades, and



PRODUCT CATEGORY				
Open rack Series	2-panel heavy rack	12U Apert open rack	18U Opened Wall rack	Adjustable Depth Open rack
Wall mount rack Series	Glass door Wall mount rack	Mesh door Wall mount rack	Double section Wall mount rack	Economic type Wall mount rack
Floor standing server rack	Glass door with casters	Mesh door with casters	4U Standard Server rack	Double open door Server rack
Outdoor cabinet	air conditioner Outdoor cabinet	Outdoor cabinet with plinth	Outdoor cabinet with fan cooling	Double Wall Outdoor cabinet
Splitter series	Bare Fiber Splitters	Blackless Fiber Splitters	ABS Splitter	Plastic Splitters
Splitter series	LSX Splitters	Rack Mount Splitters	Mini Plug-in Type Splitter	Tray Splitters
Patch cord series	LC	SC	FC	LC
FTTH product series				

Recommended Best Practices for Communication Tower Design,

Communication towers are some of the tallest structures across the landscape and birds are regularly found dead around these towers (Longcore et al. 2012a). It is not definitively understood

Life cycle cost of communication towers: identification and

The integrated model proposed demonstrates significant adaptability in LCC modeling for communication towers, offering methodological support for factor classification and path identification.



What Are Microwave Towers And How They Enhance Communication Services

Discover the vital role of microwave towers in modern communication systems. This article breaks down their function in transmitting TV and radio signals, highlighting types like

Radio masts and towers

Radio masts and towers KVLY-TV mast Radio masts and towers are typically tall structures designed to support antennas for telecommunications and



Telecommunication Towers for Global Network

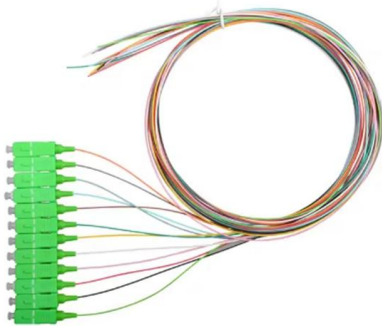
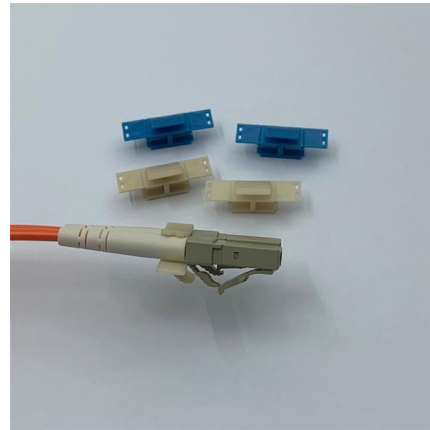
In the digital age, telecommunication towers are pivotal in enabling seamless connectivity. These towering structures serve as the backbone of





A Guide to Telecom Tower Lifecycle Management

Telecom tower lifecycle management is a comprehensive approach to managing a tower asset. It covers every stage from initial conception to final



Understanding The Anatomy of a Telecommunication

Telecommunication towers are complex, highly engineered structures that play a vital role in modern communication networks. From the sturdy

(PDF) Optimum Selection of Communication Tower

With climate change bringing more storms and higher wind speeds, it is more crucial to research the finest tower structure that withstands such



(PDF) Optimum Selection of Communication Tower

Communication towers are vital assets in our daily lives as they transfer signals between cell phones facilitating communication and commerce



Everything you need to know about cell towers

Cell towers are the unsung heroes of modern communication infrastructure, housing complex equipment to ensure seamless connectivity for



Michigan Ancillary Structure Inspection Manual (MiASIM)

13.1 Definitions Communication towers support ITS infrastructure and communication antennae and consist of three main vertical supports (legs), each mounted on a separate concrete foundation with

Optimum Selection of Communication Tower Structures Based on

Many researches have proposed different adjustments to tower structures to sustain high wind speeds and compared between tower structures under wind loads. However, up to the researcher's





Optimum Selection of Communication Tower Structures Based on

Therefore, the aim of this paper is to compare between a monopole tower and a lattice tower in terms of wind loads and life cycle cost analysis, which highlights the importance of considering life cycle cost

Contact Us

For datasheets, pricing, or custom telecom energy solutions, please visit:
<https://koskolong.co.za>