



Adam Tas Corridor Energy

Single busbar connection construction





Single busbar connection construction



Design Guide for bus bars

A value of approximately 400 circular mils per ampere is a traditional basis for design of single conductors. Since bus bars are not round, circular mils must be

What is a Busbar? A Detailed Guide

Busbars essentially serve as electrical highways, guaranteeing that power is delivered effectively and safely to where it is required. Connecting many



The Analysis of Single Bus-Bar Connection and its

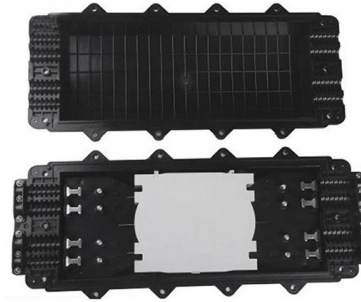
This paper analyzes single-bus connection from the reliability, flexibility and economy point of view, then outlined the typical single-bus wiring switching operation

Bus Bar Arrangement in Power Station , Single Bus Bar

Bus-bars are copper rods or thin walled tubes and operate at constant voltage. We shall



discuss some important Bus Bar Arrangement in Power Station and sub

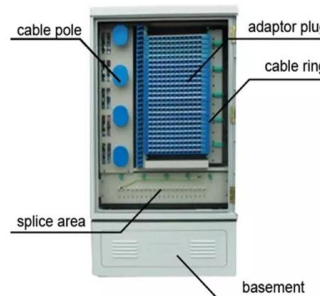


Busbar Arrangements in Substations , PDF , Electrical

It describes single busbar, double main busbar, main and transfer busbar, one and a half breaker, and ring main arrangements. For each, it provides details on their configuration, advantages, and

Work design and construction of busbar systems

The busbar system can be included in the general technical design of the electrical part of the site or can be prepared afterwards. The technical design shall define



Construction of a grid substation for engineers and

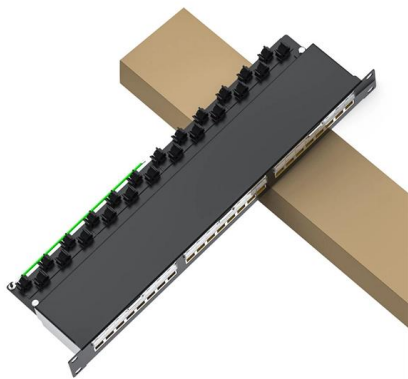
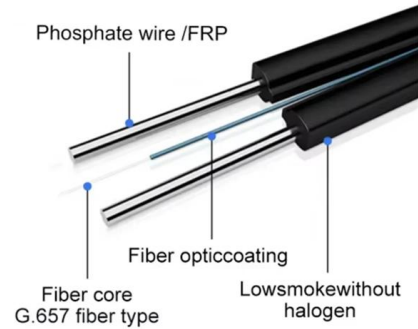
Each circuit is connected to the main busbar through a circuit breaker with isolators on both sides and can be connected to the auxiliary busbar through





Bus Bar : Different Types, Advantages & Disadvantages

This Article Discusses an Overview of What is a Bus Bar, Different Types like Single, Main & transfer, Double, Advantages and Disadvantages



Switchboard Busbar Guide (2025): Design & Standards

Tapping policy and safe connections to busbars (NEC/UL) Uncontrolled tapping of live busbars is hazardous and typically outside the

Electrical Bus System and Electrical Substation Layout

Key learnings: Electrical Bus System Definition: An electrical bus system is a setup of electrical conductors that allows for efficient power



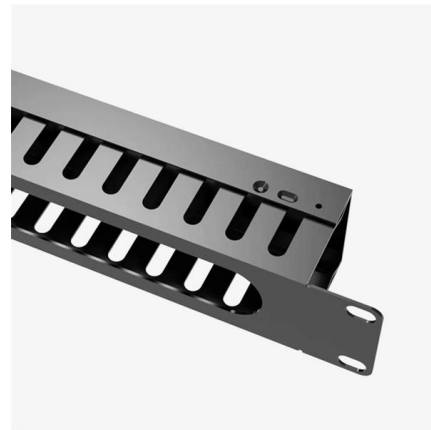
Different Bus-Bar Schemes in Electrical Substations -

What is a bus bar? In Simple words, a bus-bar is a common connection point or a node for multiple incoming and outgoing circuits such as power lines or feeders.



Different Bus-Bar Schemes in Electrical Substations -

As we know it is impractical to connect multiple conductors at one point. Hence we use bus bars, where these connections can be done spaciously and conveniently.



Types of Busbar Arrangements in Grid Stations and

We have several busbar arrangements employed in grid stations and substations; they include:
This is the simplest arrangement of a substation as

Busbar Design Standards for MV Switchgear

Busbar joints and connections to external cables or equipment (e.g., bushings) represent the most vulnerable and failure





Copper for Busbars - Guidance for Design and Installation

For busbar systems, the maximum working current is determined primarily by the maximum tolerable working temperature, which is, in turn,



ABB MV Switchgear - Single Busbar Or Double Busbar?

Two busbar systems connected to two separate circuit breaker compartments, using either a single or two circuit breakers, in a double tier



How to Design Busbar Systems for Substations

A well-designed busbar system ensures minimal energy losses, improved reliability, and enhanced safety. This guide provides a detailed

A Beginner's Guide to Busbar Fabrication and Assembly

A busbar machine is a specialized equipment used in electrical systems for efficient fabrication, including punching, bending, and shearing, to





Busbar Design: How to Spare Nano henries

The aim of this paper is to start from the most basic busbar, a simple sheet, and to show the various impacts of a change in the geometry, on both current repartition in the plate, and impedance of the

Types of Bus Bar Scheme in Electrical Substation

This is technically a single bus bar arrangement with an additional bus bar called "Auxiliary bus" energized from main bus bars through a bus coupler circuit, i.e.,



How to Design Busbar Systems for Substations

This guide provides a detailed technical description, calculations, design considerations, and best practices for designing busbar systems in

Busbar Basics: Understanding the Fundamentals of Electrical

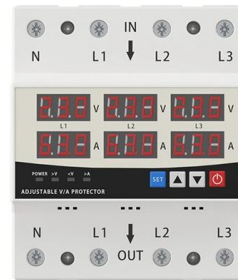
Different busbar configurations, such as single-phase, three-phase, and sandwich busbars, are discussed, along with their respective advantages and use cases. The section also highlights how



LED DISPLAY PANEL

CURRENT STATUS CLEARLY VISIBLE

IT CAN CLEARLY SHOW THE CURRENT STATUS AND VOLTAGE STATUS,
WITH EFFICIENT OPERATION AND RAPID RESPONSE.



Types of Bus Arrangements in Substations - A

Learn different types of bus bar arrangement in substations, such as single bus with bus sectionalizer, double bus system, main and transfer bus

Design Guide for bus bars

Mechanical considerations include rigidity, mounting holes, connections and other subsystem elements. The width of the conductor should be at least three times



The Analysis of Single Bus-Bar Connection and its

This paper analyzes single-bus connection from the reliability, flexibility and economy point of view, then outlined the typical single-bus wiring switching operation principles and methods.



Substation Components--Part 5: Busbar Configurations

The single bus is the simplest substation topology: every incoming and outgoing circuit connects to one common bus through its own circuit breaker



Comprehensive Guide to Busbars: Types, Design,

Explore the comprehensive guide to PV Solar Combiner Boxes: Learn about types, components, selection criteria, installation best practices,

Busbars and Connectors in HV and EHV installations

Busbar Trunking Systems A busbar trunking system is a pre-assembled configuration housing flat-bar conductors (phase and neutral) within a single



Contact Us

For datasheets, pricing, or custom telecom energy solutions, please visit:
<https://koskolong.co.za>