



Adam Tas Corridor Energy

Single cable tray with three lines





Single cable tray with three lines

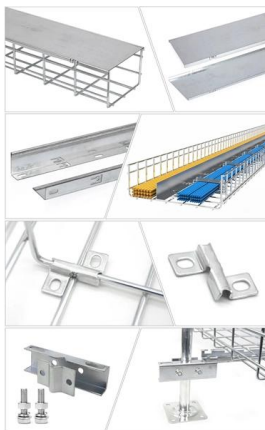


Cable Trays

Choose from a wide array of cable tray products designed by MonoSystems, the leader in cable management equipment.

CABLE MANAGEMENT SYSTEMS CABLE TRUNKINGS SYSTEM

Cable Management Systems' types fittings and accessories from SFSP are manufactured in compliance with : IEC 61537:2006 BS EN 61537:2007 International Electrotechnical Commission (Cable



How to Install Cable Tray: A Comprehensive Guide to Different Cable

Welcome to our step-by-step guide on installing cable trays! In this video, we'll explore the different types of cable trays available and provide detailed instructions for their installation.

CABLE TRAY SYSTEMS GUIDE

CONCENTRATED STATIC LOADS: Some applications may require the cable tray to support the weight of a single, dead object in



addition to the cable loads. Specifications typically require this to be

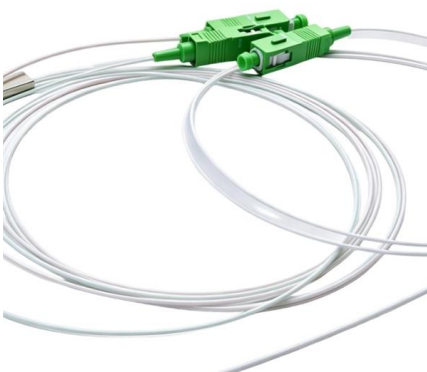
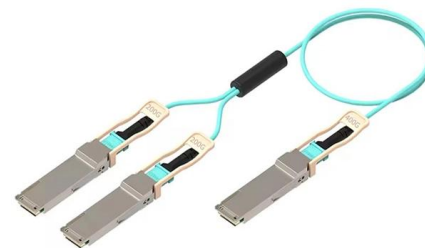


Industrial Cable Trays & Cable Tray Systems

Snap Track Cable Tray Background Snap Track was developed as a limited-width cable tray system to replace wire basket tray, conduit, and generic tray. It is

Cable Tray Technical Guide A practical guide to product selection and

Cable tray installed in a hazardous location must contain only those cables that are appropriate for this type of environment as defined in Chapter 5 of the NEC.



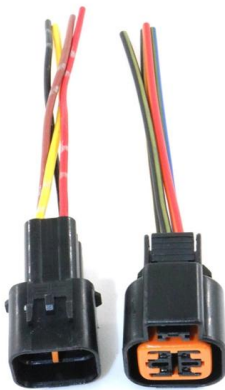
Cable tray

So, whether specifying a major new project, or simply refurbishing existing facilities, choose ABB cable tray to deliver the most effective, reliable and long lasting



CABLE TRAY SYSTEMS GUIDE

Hubbell's NEXTFRAME® Ladder Tray is the effective and widely used cable runway that supports and delivers bundles of cable between cabinets, racks, and closets, along walls, and suspended from



NEC Article 392: Cable Tray Systems

It provides rules for acceptable wiring methods that can be installed in cable trays, including conditions for use. It addresses uses permitted and not permitted for

Resources for Cable tray and ladder systems

Submittals for cable ladder and tray Eaton's submittal builder tool for B-Line series cable ladder and tray allows you to easily filter, select and download straight



GUIDE CABLE TRAYS TECHNICAL

In accordance with its continuous improvement policy, Legrand reserves the right to change the specifications and illustrations without notice. All illustrations, descriptions and technical information



CABLE MANAGEMENT SYSTEMS CABLE TRAYS & ACCESSORIES

We manufacture a wide range of products capable of providing the characteristics which respond to the proposed application, along with quality of assembly, speed of installation, and cost-saving cable trays.

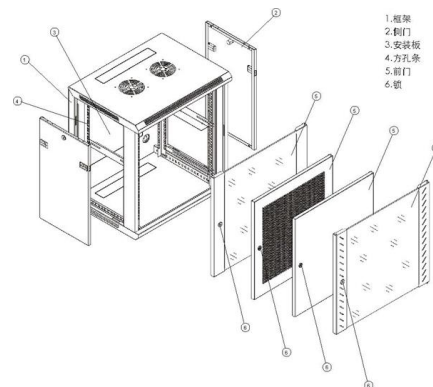


Best Practice Guide to Cable Ladder and Cable Tray Systems

Cable ladder systems and cable tray systems are designed for use as supports for cables and not as enclosures giving full mechanical protection. They are not intended to be used as ladders, walk ways

Cable Tray Technical Guide A practical guide to product selection and

Cable Tray Technical Guide A practical guide to product selection and installation This guide for engineers and installers has been developed by ABB as a practical reference regarding cable tray





CHOOSING AN OPTIMAL POSITION OF SINGLE-CORE CABLES FOR 6-500 kV CABLE LINES

Regulatory documents on cable lines, as well as catalogs consider the arrangement of single-core 6-500 kV cables in a row and in a closed triangle as two equal methods of laying, differing from each other

Cable Trays

Bahra Electric Cable Trays are an essential component of any well-designed electrical infrastructure, providing a safe, organized, and easily accessible



Code Corner: 2023 NEC Article 690.31 (C) and (C) (2)

In this installment of our Code Corner series, Ryan Mayfield focuses on the 2023 National Electrical Code (NEC) changes concerning cable trays,

Resources for Cable tray and ladder systems

Our cable tray design considerations guide details key factors to consider when designing cable tray systems for industrial and commercial applications. Browse



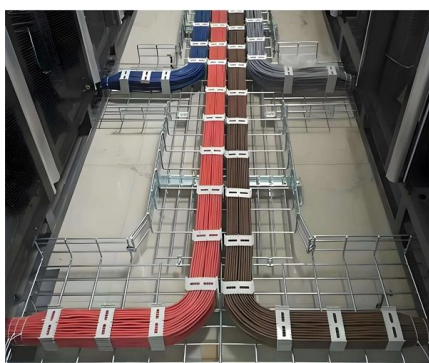
Issues with single-core cables

Issues with single-core cables in short three-phase cable runs Single-core cables in general comprise of a central circular core conductor, surrounded



Installation of the three-phase power cables

Download scientific diagram , Installation of the three-phase power cables from publication: A study on the overheating of the power cable tray , This paper includes the results of the



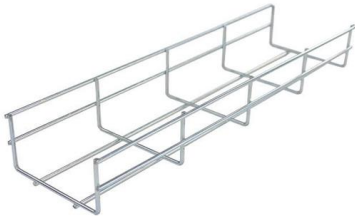
Triplexing of Cables in Cable Tray , Eng-Tips

Often I see power cables in cable tray tri-plexed. If there a reason for this like makes the power flow more efficient? Thanks!



Cable Tray Systems

Atkore Channel supports single branches of power or multiconductor control cable or instrument tubing. Ideal for communication, fire alarm, or call station and clock



Equipment Grounding Conductors for Cable Tray Systems

Use a single conductor cable as the common EGC for all the circuits in the cable tray [NEC Section 318-3 (b) (1) Exception 2]. Use individual EGC conductors in each

Contact Us

For datasheets, pricing, or custom telecom energy solutions, please visit:
<https://koskolong.co.za>