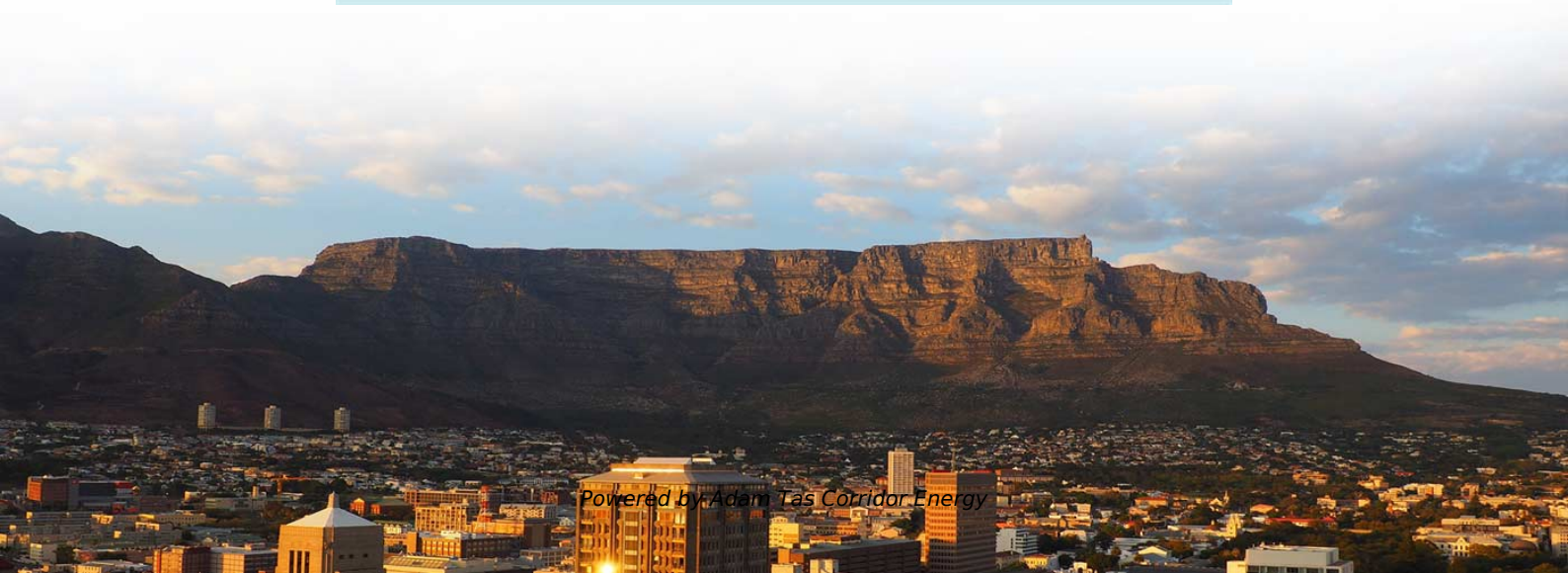
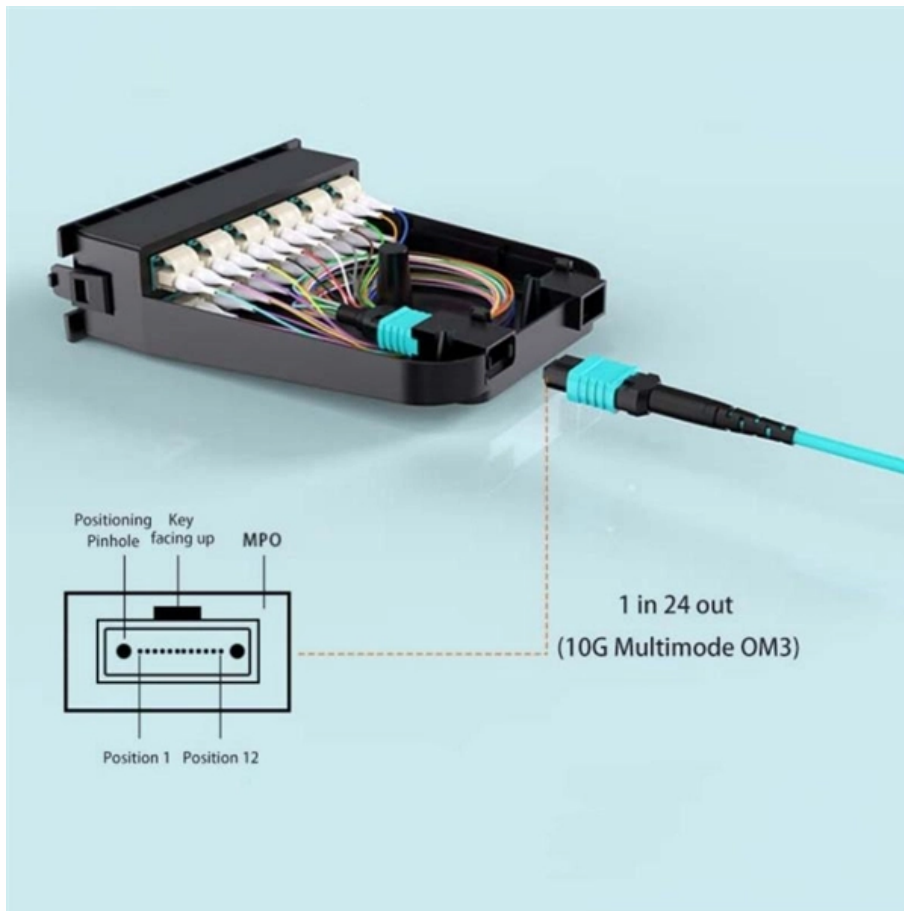




Single-mode fiber optic module wavelength



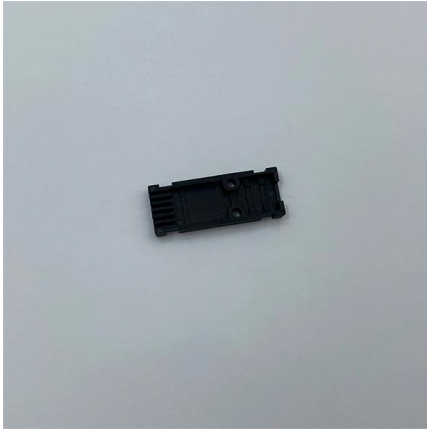


Overview

In, a single-mode optical fiber, also known as fundamental- or mono-mode, is an designed to carry only a single of light - the. Modes are the possible solutions of the for waves, which is obtained by combining and the boundary conditions. OS1 is defined in ISO/IEC 11801, and OS2 is defined in ISO/IEC 24702. In optical transceivers, wavelength refers to the nominal center wavelength of the transmitter laser.



Single-mode fiber optic module wavelength

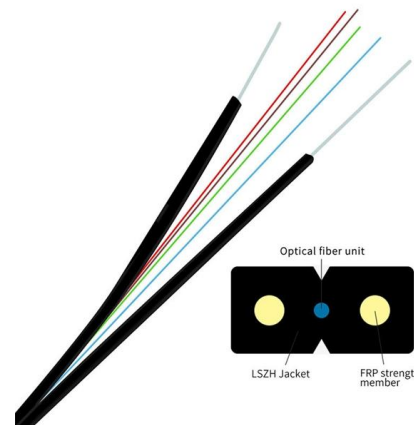


Fosco Connect QSFP-4002-IR4 QSFP+ 40G IR4 optical module, single-mode

QSFP-4002-IR4 40G QSFP+ SMF module specifications Form factor SFP Speed 40Gb/s Optical connector dual LC Operating distance 2Km Power single 3.3V Compliance MSA SFF-8431, RoHS

Transceiver Optical Module Cisco 10G SFP+ 1542.14nm DWDM

This fiber optical transceiver module operates within a wavelength range of 1563.86-1528.77nm and supports seamless data transmission over single-mode fiber spans of up to 80km. Equipped with



TOP-BIDI-1.25G-120AD/BD 1.25G BIDI SFP Module 120km

Key attributes Network Wired LAN Use switch Type optical module, Fiber Optic Transceivers Model Number TOP-BIDI-1.25G-120AD/BD Brand Name Top-trans Place of Origin Guangdong, China Rate

Single-mode optical fiber

In fiber optics, a quadruply clad fiber is a single-mode optical fiber that has four claddings. Each cladding has a refractive index lower than that of



Transceiver Optical Module Cisco 10G SFP+ TX1330/RX1270nm

Fiber Optical Transceiver, Optical Module Cisco Compatible 10G SFP+ BiDi TX1330nm RX1270nm 20km LC/UPC Single Mode Specifications With TX wavelength of 1330nm and an RX wavelength of



Single-Mode Optical Fiber (SMF)

Draka Single-Mode Fiber (SMF) provides optimum performance in both the 1310 nm and 1550 nm wavelength operation ranges (including the 1565 - 1625 nm L-band), with a low dispersion in the



1 Gigabit Singlemode SFP Fiber Optic Transceivers

Our 1 Gigabit Singlemode SFP Transceivers offer high-performance, reliable connectivity for singlemode fiber optic networks. These transceivers are





SFP Module 10G SFP Optical Transceiver GPON PON Fiber Copper

Key attributes Type SFP Module Use FTTX Network Wireless Lan, 5G, Bluetooth, Wired LAN Model Number SFP 1.25G Brand Name Unionfiber Place of Origin Guangdong, China Warranty Time 3

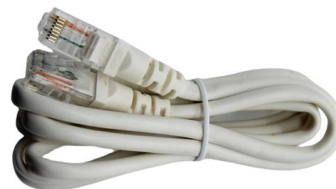


XZXCVN Singlemode Fiber Optic Splitter 1x32 PLC Module, SC

About this item [High Performance Splitter]: This single mode 1 to 32 fiber PLC splitter offers excellent low insertion loss and low back reflection, ensuring efficient signal distribution in fiber optic and

Find & Compare Optics , Photonics Services

The largest database in Optics and Photonics Compare products based on your own technical specification criteria.



Singlemode 1310 nm Fiber Optic Transmitters, Receivers, Transceivers

Singlemode 1310 nm Fiber Optic Transmitters, Receivers, Transceivers are available at Mouser Electronics. Mouser offers inventory, pricing, & datasheets for Singlemode 1310 nm Fiber Optic



40KM 1550nm Single Mode Duplex Gigabit Optical Module LC/SC

Key attributes Type Fiber Optic Transceivers
Connector Type LC Use FTTX Model Number BT-OC24-40+ Brand Name BTON Place of Origin Guangdong, China Warranty Time 3Years Data Rate



Single-mode vs Multimode SFP: What's the Difference?

Single-mode SFP module has a narrower laser wavelength, which works essentially in 1310nm and 1550nm wavelength. However, the multimode

Fiber Optic Transmission Modes

Single mode fiber has a small core (8-10 mm) and transmits light in only one mode, resulting in less dispersion and higher bandwidth over long distances. It typically operates at wavelengths of 1310





Single Mode Fiber: Types and Applications

Single mode fiber (SMF) is a type of fiber optic cable that only allows one light mode to transmit at a time. Generally, single

Fiber Optic Only SFP-10G-LR Compatible 10GBASE SFP+ 1310nm

For 10 Gb/s LC duplex optical links on single-mode fiber Meets 10GBASE-LR (1310 nm, up to 10 km) specifications with DOM/DDR support Compatible with 10 Gb/s Ethernet ports using the SFP+ form



1G SFP Modules: A Deep Dive into Specs & Types

Wavelength: This parameter defines the type of fiber compatibility as well as signal attenuation across the fiber. 850 nm is better suited for short runs in MMF; 1310

Cisco Sfp-10g-bx-u-40 Compatible Sfp+ Module

Technical Specifications: Wavelength: 1270nmTx/1330nmRx Maximum Data Transfer Rate: 10Gbps Type: Single Mode Fiber Connection Type: LC Connector Maximum Transfer Distance: 40 km (24.8

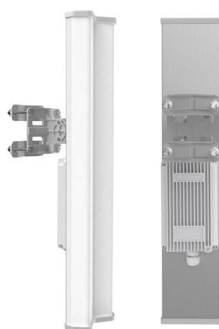


Single-mode Fibers - launching light, monomode fiber, cut-off

Typically, a fiber has single-mode characteristics only over a limited wavelength range with a width of a few hundred nanometers. The limit towards smaller wavelengths is given by the single-mode cut-off

Single-Mode Fiber Cable Guide: Types, Specs & Selection

This comprehensive guide explores Single-Mode Fiber Optic Cable, covering technical specifications, deployment scenarios, and best practices to help you optimize your fiber infrastructure



SFP Wavelength Guide: 850nm vs. 1310nm vs. 1550nm

In contrast, 1310 nm and 1550 nm SFP modules are designed for single-mode fiber (SMF), which supports significantly longer distances due to



Single-mode optical fiber

Waves can have the same mode but have different frequencies. This is the case in single-mode fibers, where we can have waves with different frequencies, but of



Single-mode optical fiber

OverviewHistoryCharacteristicsConnectorsFiber optic switchesQuadruply clad fiberExternal links

In fiber-optic communication, a single-mode optical fiber, also known as fundamental- or mono-mode, is an optical fiber designed to carry only a single mode of light - the transverse mode. Modes are the possible solutions of the Helmholtz equation for waves, which is obtained by combining Maxwell's equations and the boundary conditions. These modes define the way the wave travels through space, i.e. how the wave is distributed in space. Waves can have the same mode but have different frequencies. This is the case i

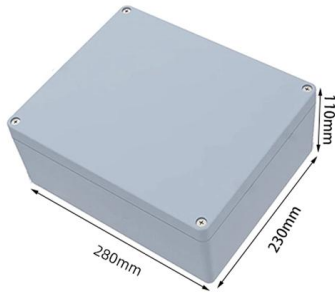
F-SMF-28 Optical Fiber

The F-SMF-28 Single-Mode Fiber from Corning (SMF-28e+) is all-glass and supports single-mode light propagation for a 1310/1550 nm operating wavelength.



The FOA Reference For Fiber Optics

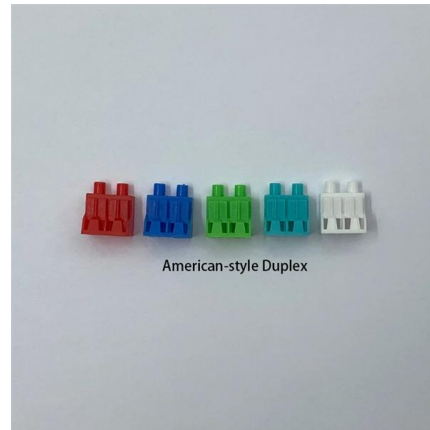
Most systems use a "transceiver" which includes



both transmission and receiver in a single module. The transmitter takes an electrical input and converts it to an

Learn how to choose the right SFP module for your network. Avoid

What Is an SFP Module? An SFP (Small Form-factor Pluggable) module is a hot-swappable transceiver used in switches, routers, servers, and telecom equipment to transmit data



STARTECH

Technical Specifications: Wavelength: 1310nm
Maximum Data Transfer Rate: 10 Gbps Type: Single Mode Fiber Connection Type: LC Connector Maximum Transfer Distance: 10 km (6.2 mi)MTBF:

Contact Us

For datasheets, pricing, or custom telecom energy solutions, please visit:
<https://koskolong.co.za>