



**Adam Tas Corridor Energy**

# **Single-mode fiber optical attenuation 15**





## Overview

---

This male-to-female FC/UPC attenuator has an attenuation value of 15 dB and is well suited for fiber amplifier, DWDM and telecommunications equipment. It features high optical power endurance and complies with Telcordia (GR-910-CORE and GR-1221-CORE). As optical passive devices, FS attenuators are mainly used in fiber optic to debug optical power performance & optical instrument calibration correction & fiber signal attenuation to ensure the optical power in a stable and desired level in the link without any changes on its original transmission. Modes are the possible solutions of the Helmholtz equation for waves, which is obtained by combining. Japan) that can be quickly installed in your single-mode (1310/1550nm) optical link to reduce optical power. This Simplex LC/Male to LC/Female premium grade attenuator (Return Loss: UPC  $\leq$  -50dB, APC  $\leq$  -60dB) can accommodate up to 200mw high power.



## Single-mode fiber optical attenuation 15

---

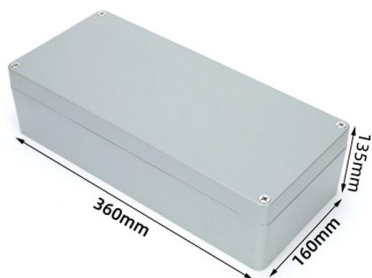
### Specifications For Fiber Optic Networks



Per current standards and specs, maximum supportable distances and attenuation for optical fiber applications by fiber type.

### Single-mode optical fiber

Unlike multi-mode optical fiber, single-mode fiber does not exhibit modal dispersion. This is due to the fiber having such a small cross section that only the first mode



### Everything You Need to Know About Multimode Fiber

Multimode fiber works well for short to medium distances, providing scalable capacity and cost-effective deployment for data centers, office buildings,

### Polarization Maintaining Fiber (PM Fiber) , OEM Optical

High performance properties of polarization maintaining (PM) fiber include excellent



birefringence and low attenuation Field-Proven as the Industry Standard PANDA



### Fixed Fiber Optic Attenuators, Single Mode

Thorlabs' Single Mode Fixed Fiber Optic Attenuators allow one to attenuate an optical signal easily by plugging an FC/PC- or FC/APC-terminated fiber directly



### Fiber-optic communication

An optical fiber patching cabinet. The yellow cables are single-mode fibers; the orange and blue cables are multi-mode fibers: 62.5/125 mm OM1 and 50/125 mm



### Spectral Ranges in Single-Mode Fiber-Optic Communication

Despite the rapid development of transmission technologies in fiber-optic lines, the E-range remained unused for a long time, since the first types of single-mode fiber (G.652A/B) in this range had





## Fiber-optic Attenuators - fixed or variable attenuation,

Fiber-optic attenuators adjust optical signal power levels, for example in fiber-optic links.

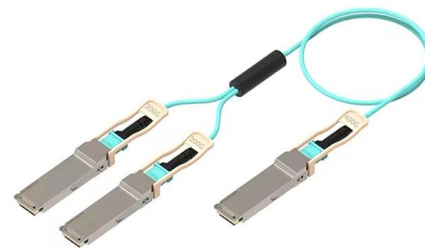


## Fiber Optic Attenuation Fixes and Loss Budget Tips

In single-mode fiber, Rayleigh scattering typically causes a loss of 0.12 to 0.15 dB/km, which aligns with FOA fiber optic standards and IEC 61300

## Single-Mode Optical Fiber (SMF)

Draka Single-Mode Fiber (SMF) provides optimum performance in both the 1310 nm and 1550 nm wavelength operation ranges (including the 1565 - 1625 nm L-band), with a low dispersion in the



## Polarization-Maintaining Single Mode Optical Fiber

Thorlabs offers both PANDA and Bow-Tie Single Mode Polarization-Maintaining (PM) fiber. These two fibers are named based on the stress rods used. Stress rods run



## Fiber Optic Attenuator LC 15dB Single-mode

A Fixed In-line fiber optic LC 15dB attenuator (Mfr. Japan) that can be quickly installed in your single-mode (1310/1550nm) optical link to reduce optical power.



**More products**

**OUTDOOR CABINET**

**FTTX SOLUTION**

**DATA CENTER**

## Fixed Fiber Optic Attenuators , Fiber Optic Attenuators

Fixed Fiber Optic Attenuator Newport's Single-Mode Fixed Fiber Optic Attenuators offer low return loss, high mode stability and a variety of attenuation values: 3, 5,

## Fiber Loopback SC Single Mode, 15dB attenuation

The L-com FOL-AT-SCUSM-15D features SC connectors and single mode fiber with an attenuation level of 15dB, which allows for directly connecting transmitter and



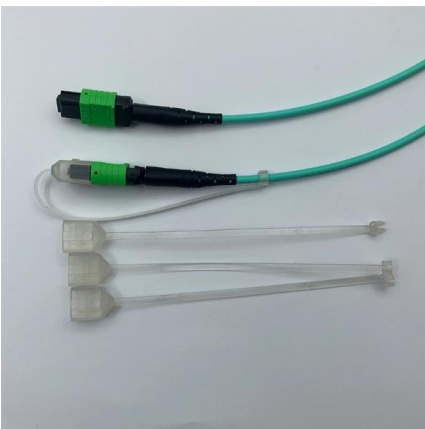


## Fiber-optic cable

A fiber-optic cable, also known as an optical-fiber cable, is an assembly similar to an electrical cable but containing one or more optical fibers that are used to carry

## Single-Mode Fibers

tight bend radii. With a bend loss considerably lower than SMF-28TM, 1550B-HP is ideal for the video leg in FTTH CWDM and applications such as smaller form factor C and L-band components and low



## Plastic optical fiber

Plastic optical fiber (POF) or polymer optical fiber is an optical fiber that is made out of polymer. Similar to glass optical fiber, POF transmits light (for illumination or

## ADSS 24 Core Fiber Optic Cable Single Mode G.652D ADSS Optical Fiber

SOFTEL Place of Origin Zhejiang, China Name multi core fiber optic cable Fiber Optical Cable Core Number 2-144 cores Fiber Optical Cable Application aerial, pipeline laying method Use Pole to Pole



## Fiber testers : Equipment and tools , Fluke Networks

Technicians use various tools to install, maintain, and troubleshoot fiber cabling: detection and verification testers, certification testers, inspection cameras,

## Singlemode vs Multimode Fiber Optic Cable

We breakdown the differences between single mode and multimode fiber optic cable, covering aspects like physical structure, bandwidth over



## Fiber Optics: Understanding the Basics

Single-mode fiber carries just the fundamental mode, removing modal dispersion, which is the main reason for pulse overlap. Therefore, single-mode fibers offer a



## SC/APC Singlemode Fixed Fiber Optic Attenuator, MaleFemale, 15dB

Fiber optic attenuators are mainly used for adjusting the Optical Power to a desired level. Attenuators are available in models with variable attenuation or with fixed values from a few dB to 20 dB or more.



## FTTH Butterfly Optic Cable

The Multi Loose Tube Non-Metallic Fiber Optic Cable is designed for outside plant, which is prone to electrical interference.

## FiberXP 15dB Single Mode FC UPC Attenuator

This male-to-female FC/UPC attenuator has an attenuation value of 15 dB and is well suited for fiber amplifier, DWDM and telecommunications equipment. It features high optical power endurance and



## The FOA Reference For Fiber Optics

The core of step index multimode fiber is made completely of one type of optical material and the cladding is another type with different optical characteristics. It



### **Corning Single Mode fiber SMF-28 Optical Bare Fiber 20000 m / 20km**

Corning SMF-28 is a single-mode optical fiber meeting ITU-T G.652.D standards, designed for long-haul telecommunications, research, and specialized optical systems.



### **Single Mode FC/APC Fiber Optic Patch Cables**

These mating sleeves minimize back reflections and ensure proper alignment of the cores of each terminated fiber end. Thorlabs also offers AR-Coated Single Mode



## **Contact Us**

---

For datasheets, pricing, or custom telecom energy solutions, please visit:  
<https://koskolong.co.za>