



Adam Tas Corridor Energy

Slovakia FTTH uses an 800G AI server

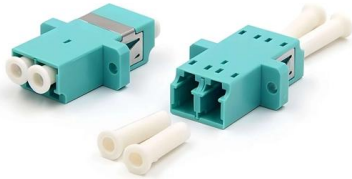




Slovakia FTTH uses an 800G AI server

Co pohání poptávku po optice 400G a 800G v datových centrech s

For AI data centers being built now, 400G and 800G succeed because the optical ecosystem around them is finally mature enough to deliver scale, flexibility, and predictable



Slovakia: Higher ARPS Following Migration to FTTx and 4G Services

In 2016, Slovakia generated total telecom service revenue of \$1.6bn (?1.5bn) (or 1.8% of its nominal GDP), an increase of 1.6% over 2015, driven by growth in fixed Internet and mobile data revenue.



What Is Driving 400G and 800G Optics Demand in AI Data Centers

From handling higher traffic densities efficiently to redefining scalability in hyperscale data centers, the need for 400G and 800G optics stems from architectural and operational imperatives.

The Rise of 800G Ethernet: FS 800G AI Switches for

Discover 800G Ethernet technology and FS 800G AI switches, delivering ultra-high bandwidth, low



latency, and lossless performance for AI/ML



The Rise of AI: Fueling the Shift to 800G Ethernet

Data centers must scale up their networking capabilities to prevent bottlenecks, ensure faster model training, and support real-time inferencing. The

400G to 800G Migration Guide , AI Data Center Network Evolution

Complete migration strategy for upgrading from 400G to 800G optical modules in AI data centers. Includes TCO analysis, deployment models, and best practices for network architects.



400G to 800G Upgrade: The Complete AI Data Center Guide

A comprehensive guide to upgrading your AI data center infrastructure from 400G to 800G networking -- covering technical specifications, business ROI, phased migration strategy,





AI data center networking: 800G transceivers that actually work in

This article focuses on 800G transceiver technology as used in real leaf-spine and AI pod fabrics: what changes at the PHY, what optics you should pick, and how to avoid the common "it



Arista 7060X6 Series

The 800G Arista 7060X6 switch series are an integral component of the Arista AI Etherlink portfolio, and are optimized to meet the throughput, scale and performance demands of the rapidly evolving

400G vs 800G Ethernet: The Future of Data Center Networks

A technical deep-dive into 400G vs 800G Ethernet -- architecture, optics, power consumption, cost and real-world deployment guidance for AI data center networks in 2025-2026.



Contact Us

For datasheets, pricing, or custom telecom energy solutions, please visit:
<https://koskolong.co.za>