



Adam Tas Corridor Energy

Specifications and dimensions of welding nuts for distribution boxes





Overview

ASTM A563 Weld Nuts standard covers pressure-temperature ratings, materials, dimensions, tolerances, marking, testing, and methods of designating openings for fasteners. It also provides requirements and recommendations for the design of welded joints and for testing of the welded joint. Note: All the information provided on this website is provided on an "as is" and "as commonly used in production" basis and you agree that you use such information entirely at your own risk. manufacturer & exporter of ASTM A563 Weld Nuts available in various forms and size, products like nuts, bolts, stud bolts and washers etc. The projections also help if the host surface is uneven, but the nut has to be fixed flat on the surface. The PEM® weld nut design helps overcome many problems associated with other welded nuts: A variety of welding equipment is suitable for installation of PEM® weld nuts.



Specifications and dimensions of welding nuts for distribution boxes

Weld Nuts and Screws

These Tab Weld Nuts have been carefully engineered to offer fast, dependable results on flat sections, con-fined corners, dose spacing, flanges and narrow channels in open and blind applications.



Distribution Box

Metal Distribution Box Features Continuously welded seams
Foam-in-place seamless gasket
120-degree opening heavy-duty industrial hinges
IP66 protection rating against dust and water according



DIN 929

Note: All the information provided on this website is provided on an "as is" and "as commonly used in production" basis and you agree that you use such information

Hex Weld Nuts , DIN 929 Standards

At ITA Fasteners, we stock hex weld nuts in varying dimensions and materials for your every possible need. Get quote or call our sales team now.



Requirements And Specifications For Installation Of

In flammable and explosive environments, explosion-proof distribution boxes should be selected and explosion-proof treatment should be carried out.



STD4434

1 Scope This standard provides dimensions and requirements for weld nuts intended for resistance projection welding. It also provides requirements and recommendations for the design of welded



Square Weld Nuts

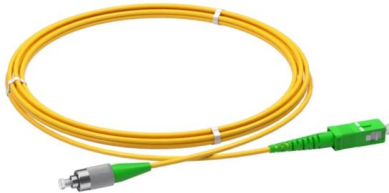
Square Weld Nuts are heavy profile hexagon head bolts with full or partial thread configurations. Boltport is a manufacturer of Square Weld Nuts in metric and





What are the specifications of screws for electrical

Distribution box screw specifications are generally M3, M4, M5, M6, M8, etc. Different specifications of screws are suitable for various occasions and needs.



ASTM A563 Weld Nuts,Nuts, Weld Nuts Dimensions

ASTM A563 Weld Nuts standard covers pressure-temperature ratings, materials, dimensions, tolerances, marking, testing, and methods of designating openings

SELF-LOCATING PROJECTION WELD NUTS

A variety of welding equipment is suitable for installation of PEM® weld nuts. Best results have been obtained with a 50KVA press-type, spot-welding machine whose upper welding head moves



STD4434

Dimension for weld nuts without Scania part numbers should be avoided, but is given in this standard for information. See Guide23 and STD4385 for further information.



Weld Nut Specifications and Dimensions

Projection Welding Nut - Free download as PDF File (.pdf), Text File (.txt) or read online for free. This document provides specifications for various



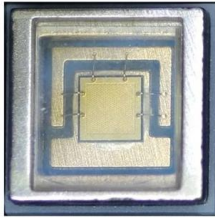
Hex Weld Nuts

Hex Weld Nuts are heavy profile hexagon head bolts with full or partial thread configurations. Boltport is a manufacturer of Hex Weld Nuts in metric and imperial

DIN 928 Square Weld Nuts Dimensions Standards

DIN 928 Square Weld Nuts Dimensions, Specifications, Standard, Weights, Equivalent and Download PDF

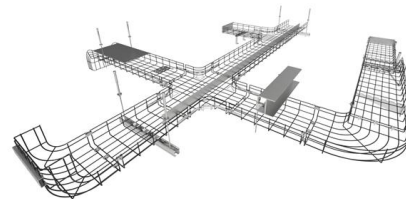




Distribution box Rubber Handy 6 Robust full rubber housing, impact resistant, oil-, UV- and acid resistant. Protected with a ground fault interrupter and circuit breaker. All protections covered by

DIN 928 Specifications - Square Weld Nuts : Fuller Fasteners

Fuller Fasteners, Distributor of Metric and Imperial Fasteners, stainless steel, brass, nylon, hex nuts, bolts, nuts, screws, taps, dies, tools and kn95 masks



DIN 929 Hexagon Weld Nuts Dimensions Standards

DIN 929 Hexagon weld nuts Dimensions, Specifications, Standard, Weights, Equivalent and Download PDF

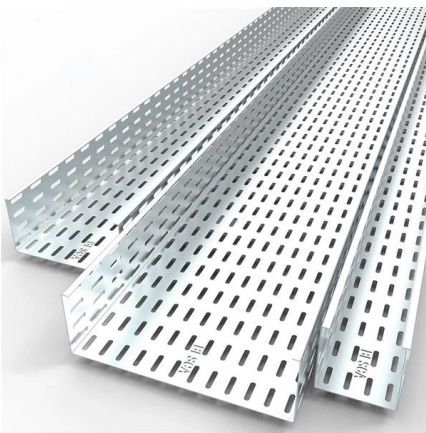
Weld Nut Specifications and Dimensions , PDF

This document provides specifications for various metric weld nuts including hexagon, round pilot, and square styles. It lists dimensions such as



Technical Specifications of Bolts and Nuts for Overhead Distribution

Purpose and Scope This specification sets out the guideline requirements for the supply of materials used on Totally Exposed Distribution Network.



TECHNICAL SPECIFICATION FOR LT DISTRIBUTION BOX

General Technical Particulars for LT Distribution Boxes : - The L.T. Distribution Boxes should be of the dimensions as per the drawing & details in the table furnished. approved clearances and technical



50KW modular power converter



Flexible Configuration

- Modular Design, Expandable as Required
- Small/light, Well Mounted
- Installed in Parallel for Expansion

Powerful Function

- Support PV/ESS
- Grid Support, Equipped with SVG Technology
- On-Grid and Off-Grid Operation

Reliable Protection

- Outdoor IP65 Design
- Sufficient Protection Functions Equipped

Welding Nuts , Welding Fasteners , Projection Weld Nuts , JHP

Once the hex weld nut's welding cycle is completed, the weld nut and substrate will not be able to be separated without destruction of the workpiece. Contact Monroe-JHP Fasteners for Wholesale Weld



Major types of electrical boxes Technical specifications

Technical specifications There are 10 major types of electrical boxes used in Canada. All these types of boxes serve specific purposes and are offered with various features / characteristics.



The Technical Specifications for Fiber Distribution Boxes

The fiber distribution box, a crucial component in optical fiber networks, serves a dual purpose of managing and protecting optical fibers while facilitating

DISTRIBUTION BOX

Technical Specification for Distribution Box (DB)-
Accessory for LT AB Cables 1. SCOPE 1.1 This
Distribution Box (DB) should be made up of
Weather & Moisture Proof Outer box with Spring
loaded



DIN 977

Hexagon Weld Nuts with Flange DIN 977 - 1998
Display drawing: 3D DRAWING Download CAD
Model



SELF-LOCATING PROJECTION WELD NUTS

A variety of welding equipment is suitable for installation of PEM weld nuts. Best results have been obtained with a 50KVA press-type, spot-welding machine whose upper welding head moves



Contact Us

For datasheets, pricing, or custom telecom energy solutions, please visit:
<https://koskolong.co.za>