



Adam Tas Corridor Energy

Specifications of 600 Cable Tray





Overview

The Unitrunk KLMR600T is a 600mm width medium duty cable tray, from the Uniklip Medium Duty Cable Tray Systems range. This product is manufactured to meet BS 61537:2007 standards and is composed of pre-galvanised steel material. All illustrations, descriptions and technical information included in this document are provided as indications and can cable trays are equivalent. The mechanical and electrical characteristics, tests, certifications, overall quality management, recommendations mentioned. This tray is ideal for high-density cabling environments, providing excellent support and organization to meet your extensive wiring needs efficiently and effectively.



Specifications of 600 Cable Tray

Microsoft Word

3.1 Cable trays & accessories shall be of two types, namely ladder type and perforated type. Technical particulars are specified in data Sheet-A and drawings enclosed with this specification.



600mm Cable Tray

Cable trays functionally carry, support, and manage electrical cables and other utilities for everything they construct. A 600mm cable tray has a width of 600



GUIDE CABLE TRAYS TECHNICAL

NEMA VE 1-2017 Specifies requirements for metal cable trays and associated fittings designed for use in accordance with the rules of Canadian Electrical Code, Part I and the National Electrical Code®

Product Specifications: CABLE TRAY

AS/NZS 4680:2006 FDG CABLE TRAY FDG Cable Tray is designed to continuously support cable systems including; Power, Data, and Audio

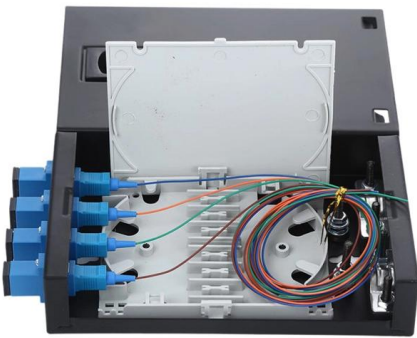


Visual. A quick and easy system to install without the



600mm Medium Duty Cable Tray x 3 Meter

With punched holes at 25mm centres and 25mm return flange slides, this medium gauge cable tray ensures easy fixing, flexible adjustment, and secure cable



600mm Return Flange Medium Duty Cable Tray 25mm

Home > Cable Management > Steel Cable Tray > Medium Duty Pre-Galvanised > 600mm Return Flange Medium Duty Cable Tray 25mm Deep (3m Length)



600mm Heavy Duty Cable Tray (3m Length)

All Heavy Duty cable tray supplied as 3 metre lengths up to 900mm





MDM

Fully automated CNC manufacturing facility for cable trays and ensures premium and precise quality, shorter lead times, and easy repeatability. One Stop Solution for all types of Cable Trays, Conduits,

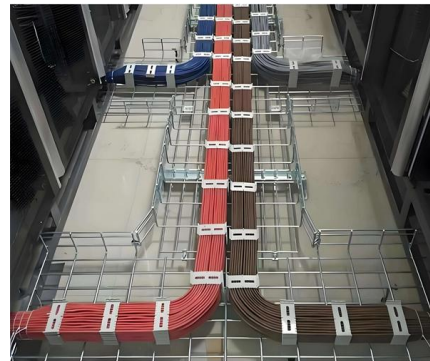


600mm Cable Tray, 600mm Ladder Cable Tray Manufacturer

Introducing the high-capacity 600mm cable tray from NewReach, designed to handle a large volume of cables effortlessly. This tray is ideal for high-density cabling environments, providing excellent

Lapp TC 600 Tray Cable , Allied Wire and Cable

The Lapp TC 600 Tray Cable is suitable for use in plant expansion, contractor markets, A& E firm plant designs, tray wiring, and anywhere VNTC® cables are used. This cable is easier to pull than a



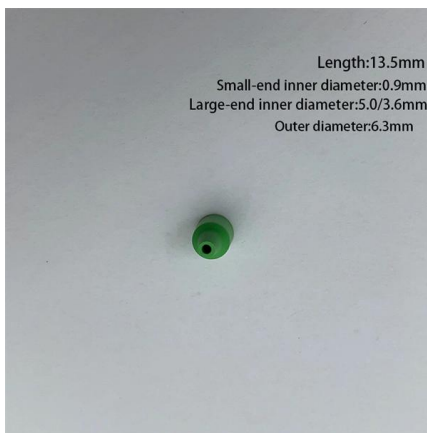
XS Cable Tray SXSP600/100SS , Ramdev Steel Industries

Profile Design Perforated Cable Tray System are crafted from high-quality stainless steel. Renowned for its durability, corrosion resistance, and sleek appearance,



Cablofil UDO24KITEZ Electro Zinc Steel Cable Tray Universal

Electro-zinc steel universal dropout for 600 mm wide wire mesh cable trays. Curved design maintains bend radius and allows tool-free cable exit without cutting the tray. Supplied as a complete kit.



600mm Medium Duty Cable Tray - 3m HDG

The 600mm medium duty cable tray offers a robust and versatile solution for supporting and managing cables in both internal and external environments.

Niedax, Kleinhuis & Fintech

CABLE TRAY SPECIFICATIONS Cable Tray Design & Manufacture Niedax's Cable Tray systems are designed and manufactured according to National (Indian Standard, CPRI) and International



cable tray technical specifications

Armorduct cable tray systems are usually assembled using M6 roofing bolts particularly for couplers, fishplates and connection to supporting framework. It should be noted that independent testing has



CABLE TRAY

Cable Support Systems are well designed to provide necessary support for cable trays, cable ladders and trunkings. Cable supports are manufactured according to common standards from high quality



Cablofil CEFASDC Hot Dip Galvanised Steel Cable Tray Base Coupler

Overview Cablofil CEFASDC base coupler enables secure longitudinal connection of wire mesh cable trays within cable support systems. It provides screwless joining for tray widths from 100 to 600 mm

26 05 36 Cable Trays for Electrical Systems

EATON B-LINE SERIES GUIDE SPECIFICATION
Section 26 05 36 - CABLE TRAYS FOR
ELECTRICAL SYSTEMS 26 05 364/2025 Specifier
Notes: This product guide specification is written





Tray Cable , Tray Cable Inventory for Industrial Use

We provide flexible installation options, including single and multi-conductor tray cables that can be installed in free air, raceways, or direct burial. Whether you

Product Specifications: CABLE TRAY

FDG CABLE TRAY FDG Cable Tray is designed to continuously support cable systems including; Power, Data, and Audio Visual. A quick and easy system to install without the need for specialised



600mm Heavy Duty Cable Tray (3m Length)

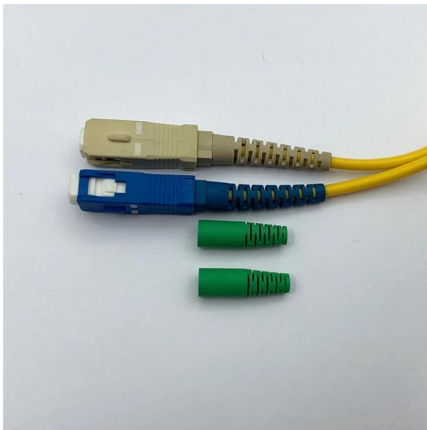
50mm Return Flange.All Heavy Duty cable tray supplied as 3 metre lengths up to 900mm wide.Available in 3 standard designs of cable tray to suit individual

Cablofil Cable Management , Legrand

Build a cable management system with Cablofil wire mesh cable tray, ladder cable tray, prefab assemblies for branch circuit wiring, fasteners, and accessories.



Application



Unitrunk KLMR600T Tray 600x25mmx3m

The Unitrunk KLMR600T is a 600mm width medium duty cable tray, from the Uniklip Medium Duty Cable Tray Systems range. This product is manufactured to meet BS 61537:2007 standards and is

Cable tray, Width: 600mm

Cable tray for horizontal cable routing. Fitting underneath the worktop. For mounting cables, multiple socket strips, and adapters. Fastening material. RAL 7035 light grey powder coated. Here you can



Legrand SRFL600G , Cable Tray Heavy Duty 600mm x 3m Hot

Cable tray manufactured from a hot dipped galvanised steel construction ideal for indoor use in commercial or industrial environments. . . Strong and durable system · Distinctive slot pattern and



Tray Cables

Tray cables are used in control and power applications in chemical plants, steel mills, industrial plants, utility substations and generating stations, as well as commercial buildings. Tray cables are available



Cable Tray Dimensions and Specifications as per NEC

Many electrical systems employ cable trays. They route cables safely & efficiently. NEC defines minimum cable tray size & electrical installation

Contact Us

For datasheets, pricing, or custom telecom energy solutions, please visit:
<https://koskolong.co.za>