



Adam Tas Corridor Energy

Standard dimensions of a 72-core optical distribution box





Standard dimensions of a 72-core optical distribution box



Wiley Online Library , Scientific research articles, journals, books

Hier sollte eine Beschreibung angezeigt werden, diese Seite lässt dies jedoch nicht zu.

Optical Distribution Frame RFO

You can build the optical distribution frame (ODF) system that conforms to your fiber distribution requirements, with three RFO frame formats and two RFO chassis for optimal connectivity,



OPTICAL FIBER DISTRIBUTION FRAME.cdr

NORDEN Fibre optic distribution frame is a high-capacity, high-density fibre distribution frame, suitable for the composition and distribution of fibres in optical access network to achieve the fibre optic lines

best ODF Wall Mounted 72 core

Maximum Splice Tray : 12 Maximum splicing per Tray : 24 Splicing Capacity : 24-288 Core
Operating temperature : -25? to +80?



Atmospheric pressure : 70~-106Kpa Standard
working wavelength :



Optical Distribution Frame

Optical Distribution Frame The Optotec ODF is an ETSI all-purpose metal rack designed to reach maximum modularity and flexibility, and allow easy on-site assembly.

72 core ODF Wall Mounted Optical distribution Frame

Maximum Splice Tray : 12 Maximum splicing per Tray : 24 Splicing Capacity : 24-288 Core
Operating temperature : -25? to +80?
Atmospheric pressure : 70~-106Kpa Standard
working wavelength :



FDB-12E 12 Core Optical Fiber Distribution Box

The FDB-12E Optical Distribution Box is ideal for FTTH networks, supporting 8/16 fusion splices, 12 SC/LC connectors, and 1:8 or 1:16 PLC splitters. With IP55





MAY-ODB-7201 72 Fibers Optical Distribution Box

Description: Optical Distribution Box provides fiber optic cable management for the connection of distribution cables and drop cables at the user access point in fiber



OPTICAL FIBER DISTRIBUTION FRAMES (ODF) AR-RODF-SO Series

6. OPTICAL AND ELECTRICS PROPERTY Nominal operating wavelength:850nm,1310nm,1550nm; Insertion loss (dB): ≤ 0.2 dB; Return loss (dB): PC type ≥ 45 dB, UPC type ≥ 50 dB, APC type ≥ 60 dB;

72-core ODF distribution unit

The 72-core ODF Unit is a key device used in fiber optic communication systems for cable termination and distribution, enabling fiber line connection, distribution, and scheduling.



Optical distribution frames and patch panels

Supporting more fiber with lower cost and higher flexibility, Technetix offers a variety of wall, floor and rack-mounted optical distribution frames (ODF) and patch panels.



72 Core FTTH Optical Fiber Distribution Box IP55 Waterproof Outdoor

Fiber Optic Distribution Box IP Rate IP55 Product Model FDB-72B Product Size Inner Box Size 410*345*180 mm 420*350*185 mm Ports 2 inlet port 30mm 2 out port 25mm 2 As Spare 12mm



ODF Optical Distribution Frame Spec Sheet

In many cases, the ODF racks will be deployed in small POP buildings alongside EQF frames where transmission equipment is mounted. These ODF's then provide the necessary connection from the

OPTICAL DISTRIBUTION

Splice & Distribution Enclosure Modular design for 19" standard frame Built in splice and distribution modules Each module has reliable positioning devices Modules can be drawn out from the enclosure



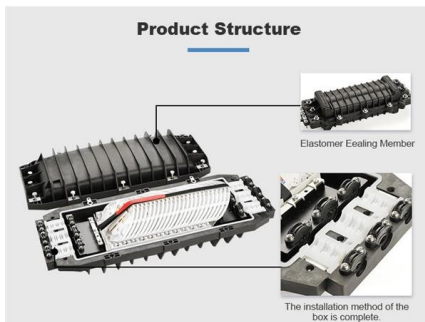


SMC 72-Core Junction Box Fiber Optic: Efficient FTTX

Discover the SMC 72-Core Junction Box Fiber Optic: Durable, versatile, and IP65-rated. Perfect for FTTX networks. Order now for efficient fiber management.

Optical Distribution Frame,72 Port Fiber Optic ODF

The 72 port fiber optic ODF unit is standard size with 6 inside trays in the closure, its front and rear covers can be opened, convenient to use. The 72 port fiber optic



Optical Distribution Box

Optical Distribution Point (ODP) or Optical Distribution Box 2 Cores LW-ODB-2D Description: Optical Distribution Box provides fiber optic cable management for

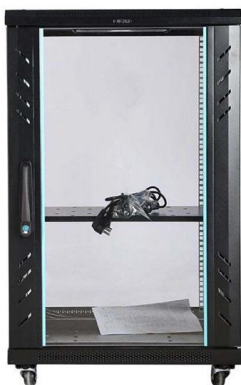
Optical Distribution Frame

Optical Distribution Frame (ODF) is a unit for protecting the optical cable and pigtail splice in the cable laying. It is mainly used for the straight-through connection and branch connection of the indoor



72 Port FC Full Load Optical Distribution Frame

This frame is ideal for indoor fiber optic cables connection storage, distribution and management. Features: o Modular design with splicing and distribution function o Standard size, light weight and



FlexCore Optical Distribution Frame Ordering Guide FBCB58-SA

FlexCore Optical Distribution Frame offers the ultimate in flexibility, manageability, scalability, and security.



FTTH ODF 72 Core 72 Port Sc/LC Rack Mount Fiber

It is made of 19" cold-roll steel box, with plastic splice tray inside, suitable for pigtail, ribbon and bunch cable distribution. And it has metal sliding



Active
Optical
Cable



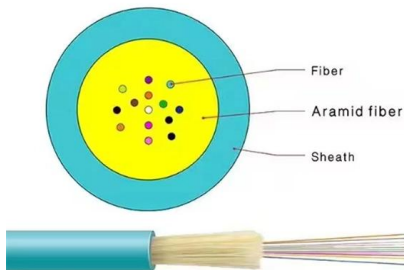
Optical distribution frame, terminal box, fiber distribution box, ODF

Some connectors commonly used in optical fiber connection in optical fiber links, such as: optical fiber distribution frame, terminal box, fiber distribution box, ODF distribution frame, what are the



ODF Wall Mount Fiber Enclosure Distribution Box FC

This fiber optic distribution frame is designed for outdoor wall mounted using, cold-roll steel, with adapter plate & splice trays at one side for fiber splicing,



72 Core ODF

72 Core ODF Optical Distribution Frame (ODF) is a device used in fiber-optic telecommunications networks to connect, manage and distribute optical fibers



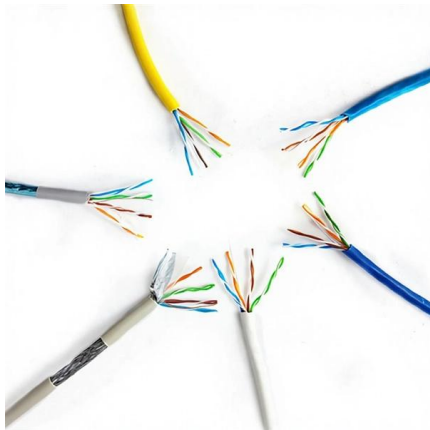
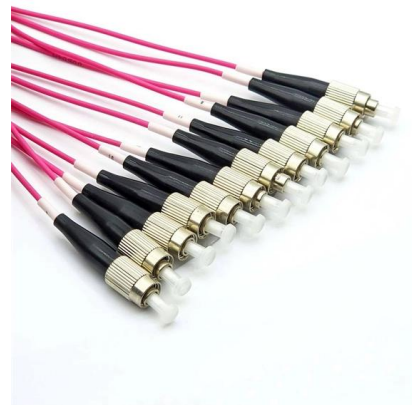
Fiber Distribution Box.pub

Fiber Distribution box contains the shell, the internals (supporting frame, set fiber disc, fixing device) and optical fiber joint protective element. Prominent advantages of fiber termination box lie in efficient



FTTH Outdoor 72 Port Optical Distribution Frame Rack

ODF unit box is a high-density, high-capacity design product, with good looks generous, reasonable distribution, easy to find, easy management, easy



ODF / Optical Termination Box (OTB)

»Home »Product »Optic Accessories » ODF / Optical Termination Box (OTB) ODF/OTB 12, 24, 48, 72, 96 Cores ODF Patch Panel - PI Series ODF patch panels are designed to provide a high density 19"

PSPE FIBRE OPTIC DISTRIBUTION BOX

Distribution Box PSPE-576 FEATURES: for use in FTTH networks in multi-dwelling buildings wall-mounted on the lowest level of a building terminates cables coming to the building from





Contact Us

For datasheets, pricing, or custom telecom energy solutions, please visit:
<https://koskolong.co.za>