



Adam Tas Corridor Energy

Standard for Rubber Sheet Thickness of Cable Tray Supports





Standard for Rubber Sheet Thickness of Cable Tray Supports



CABLE TRAY SYSTEMS GUIDE

Some applications may require the cable tray to support the weight of a single, dead object in addition to the cable loads. Specifications typically require this to be applied at the midpoint of the span between

FRP Cable Tray Catalog Features & Specs & Applications

Ideal for Managing and Protecting Cables FRP cable tray is the support system for managing cables and protect cables from heating, rains and corrosive elements.



RECOMMENDED SPECIFICATIONS OF JUNCTION BOX AND CABLE TRAY

Based on current industry practice, the straight type cable trays are more commonly used in offshore structures and units, so this section addresses the standard specifications of straight type cable trays.

Enduro_Specification_Ladder Cable Tray_04-30-21

UL (Underwriters Laboratories, Inc.) Standard for Non-Metallic Cable Tray Systems CSA



INTERNATIONAL (National Standard of Canada)
CAN/CSA-C22.2 No. 126 Cable Tray Systems



Enduro_Specification_Ladder Cable Tray_04-30-21

For International Standards, the manufacturer shall declare the tray system Safe Working Load (SWL) per the International Electrotechnical Commission (IEC) 61537 and publish in the form of a table or



Best Practice Guide to Cable Ladder and Cable Tray Systems

This guide covers cable ladder systems, cable tray systems, channel support systems and associated supports intended for the support and accommodation of cables and possibly other electrical



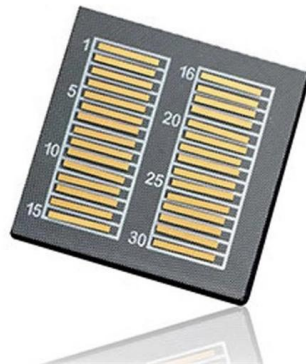
12-SDMS-06

4.1.2 The Metallic cable trays shall be manufactured in accordance with NEMA VE-1 standard and/or equivalent IEC standard. 4.1.3 Metallic cable trays shall be designed as a mechanical support for



Cope Ladder Master Spec

Cable tray systems are defined to include, but are not limited to straight sections of [ladder type] [trough type] [solid bottom type] [channel type] cable trays, bends, tees, elbows, drop-outs, supports, and



cable tray technical specifications

It should be noted that independent testing has been carried out to verify the structural performance of cable tray at the minimum and maximum temperature classifications for test conditions. They should

26 05 36 Cable Trays for Electrical Systems

Install cable tray as a complete system, including fasteners, hold-down clips, support systems, barrier strips, adjustable horizontal and vertical splice plates, elbows, reducers, tees, crosses, cable





Cable tray manual

Nearly every aspect of cable tray design and installation has been explored for the use of the reader. If a topic has not been covered sufficiently to answer a specific question or if additional information is

Cable Tray Installation Specifications , PDF , Sheet

This document provides installation guidelines for cable trays, including: 1) Cable trays come in perforated and ladder types, with perforated trays made of steel



12-SDMS-06

4.2.2 Metallic cable trays shall have adequate mechanical strength and rigidity to provide adequate support without undue deflection. They shall not have sharp edges, burrs or projections that can

Technical Specification for Cable tray installation and cable laying work

1. Scope :- This specification covers the following major activities; - Fabrication and installation of Mild Steel (MS) support structure for Galvanized Iron (GI) Cable tray. - Installation of perforated GI Cable



CABLE TRAY CABLE TRAY

Description Fabricated from sheet metal with high quality to protect cables. Provide various sizes. Various thicknesses for different load requirements. Different Pattern and fl ange types are available.



CABLE TRAY

Cable Support Systems are well designed to provide necessary support for cable trays, cable ladders and trunkings. Cable supports are manufactured according to common standards from high quality



Document DICOS

Do not use a cable tray as a walkway, ladder, or support for people; a cable tray is a mechanical support system for cables and raceways. Using cable trays as walkways can cause personal injury and can



Guide to cable support systems

Standards: DIN EN ISO 1461 Applications: Indoor areas with a certain level of moisture and impurity, outdoor areas with medium levels of contamination, e.g. laundries, urban atmosphere

-



INTRODUCTION

Standard Cable Trunk Horizontal Bend 90° Connection -Any other values of Radius can be arranged upon request -For Curved type add (C) in the end of code -Any further dimension and specs can be

QCS 2010: Cable Tray Specifications , PDF , Cable , Screw

It specifies that cable trays shall be constructed from hot-dipped galvanized mild steel with a minimum thickness of 1.5mm. Tray components must be accurately



Cable Tray Technical Guide A practical guide to product selection and

In designing supports for a cable tray system, consideration should be given to the loads associated with future cable additions and any additional loading that may be applied to the cable tray system (e.g.,



IEC Standard for Cable Tray: Complete Technical Guide

All trays must undergo salt spray tests and coating thickness tests to ensure the coatings meet the durability levels required under the IEC standard for



GUIDE CABLE TRAYS TECHNICAL

This eco-declaration is neither a label nor a regulatory marking, but the PEP does constitute an essential decision support tool for any company signed up to an environmentally-responsible construction

Document DICOS

To install the cable tray supports, first find the required elevation from the floor to the bottom of the cable tray and establish a level line with a laser or a nylon string.





Cable Tray Specification Guide , Types, Materials, Sizes

Cable Tray Specification In the realm of infrastructure development, the efficient management of electrical conduits plays a pivotal role. This section delves into the intricacies of selecting and

Type of Cable Tray

If cable trays are being installed where working space is a problem, hand access through the cable tray bottom may help to facilitate the installation of small diameter cables: control instrumentation, signal,



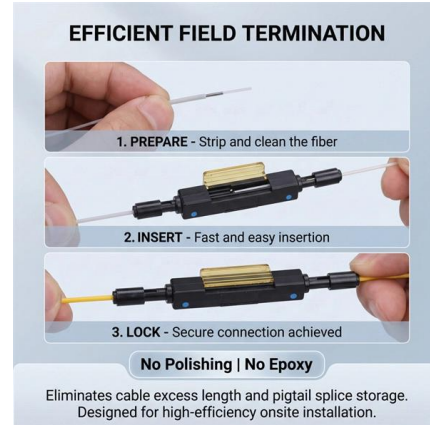
Cable Tray Dimensions Guide: Standard Sizes, Tray

Standard Cable Tray Dimensions Cable tray dimensions are not chosen at random. Across most global markets, they follow well-established



Full cable tray systems specification document

B. Cable tray systems are defined to include, but are not limited to straight sections of [ladder type] [trough type] [solid bottom type] [channel type] cable trays, bends, tees, elbows, drop-outs, supports



Cable Tray Systems

EzyStrut offers some of the strongest cable trays in their classes, and produces them to a very high structural and visual standard. Cable trays offer continuous support of cables, are lightweight, quick

Cable Tray Technical Guide A practical guide to product selection and

SOLID-BOTTOM CABLE TRAY Providing additional cable protection, solid-bottom cable tray is sometimes preferred to support and protect numerous small instrumentation and control cables.



IEC Standard for Cable Tray: Complete Technical Guide

This standard outlines the construction requirements, testing methods, and performance parameters for cable trays and related support systems.



CABLE TRAY SYSTEM

CABLE TRAY ICMS cable tray system including Fittings and accessories is manufactured With return flange in a standard length of 2.44Mtr and 3 Mtr, according to the following Specifications and



Chapter 14 Cable Support systems

For three-phase, single conductor cables, these forces cause violent thrashing of the individual conductors, frequently resulting in inadequately supported cables jumping out of their cable tray or

TECI MAIT FRPCT Cable Tray signed & sent to Purc.pdf

1.2 The design, material, construction, manufacture, inspection, testing and performance of FRP Cable Trays & Accessories shall conform to the latest revision of relevant standards and codes of practices



Channel tray

T& B channel tray systems are fabricated from a corrosion-resistant metal (low-carbon steel, stainless steel or an aluminum alloy) or from a metal with a corrosion-resistant finish (zinc or epoxy). The



LEGRAND CABLE TRAYS TECHNICAL GUIDE

Not all cable trays are equivalent. The mechanical and electrical characteristics, tests, certifications, overall quality management, recommendations mentioned in this technical guide only apply to our



Wire Mesh Cable Trays Technical Information Detailed,

Wire Mesh Cable Tray Detailed Information: a. A job site, field adaptable support system primarily for low voltage telecommunication and fiber optic cables. These



B-Line series Cable Tray Design Considerations

Our wind certification report provides you with list of acceptable B-Line series cable tray supports, fittings and covers based off of the environmental conditions, cable loading, and type of cable tray in your





Contact Us

For datasheets, pricing, or custom telecom energy solutions, please visit:
<https://koskolong.co.za>