



**Adam Tas Corridor Energy**

# **Standard thickness of cable trays for electrical construction**





## Standard thickness of cable trays for electrical construction

---

### Cable Tray Guide: Picking the Best Thickness and Width Options



However, selecting the correct thickness and width of a cable tray is essential to maximize performance, avoid safety hazards, and minimize costs. This article explains the key

### Unlocking the Secret: Exact Electrical Cable Tray Dimensions for

Discover essential electrical cable tray dimensions, including standard sizes, materials, and proper installation guidelines. Learn how to select the right cable tray for your project with this



### IEC Standard for Cable Tray: Complete Technical Guide

IEC 61537 is the internationally recognized benchmark for metal cable tray systems. It applies to cable trays made of steel, stainless steel, aluminum, or

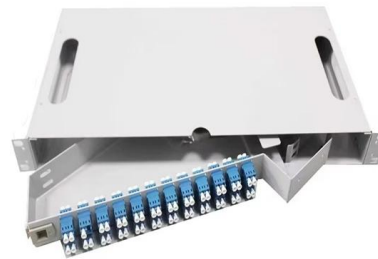


### Cable Tray Size Calculation for Project Engineers

Cable tray thickness should be selected based on the total cable load, tray width, support span,



and material strength. Heavier cable runs require thicker



### Codes and Standards , Cable Tray Institute

Provides technical requirements concerning the construction, testing, and performance of metal cable tray systems. It is the first joint effort of NEMA and CSA International to put in one place standards

### Full cable tray systems specification document

2.02 CABLE TRAY SECTIONS AND COMPONENTS  
A. General: Except as otherwise indicated, provide metal cable trays, of types, classes and sizes indicated; with splice plates, bolts, nuts and



### GUIDE CABLE TRAYS TECHNICAL

Specifies requirements for metal cable trays and associated fittings designed for use in accordance with the rules of Canadian Electrical Code, Part I and the National Electrical Code®



## CABLE TRAY

Cable Support Systems are well designed to provide necessary support for cable trays, cable ladders and trunkings. Cable supports are manufactured according to common standards from high quality



### Cable Tray Width, Dimensions and Specifications as per

Cable Tray Width, Dimensions and Specifications as per NEC Learn about cable tray width dimensions and specifications as per NEC standards. Understand types,

### B-Line series Cable Tray Design Considerations

Cable tray support locations are defined by the NEMA VE-1 and VE-2 Manufacturing & Installation Standards, which specify the requirements for cable tray systems designed for use in accordance



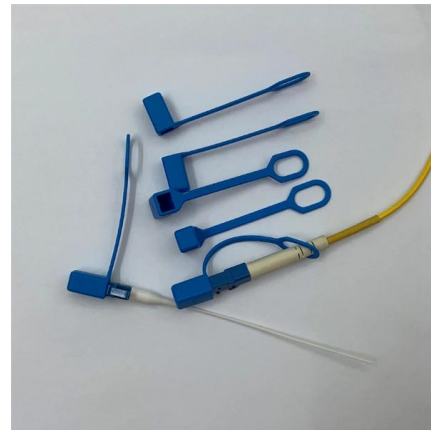
### Cable Tray Size Calculation for Project Engineers

Cable trays are essential for organizing and supporting electrical and communication cables, as well as assuring safe installations. Choosing the



## Cable Tray and its types & Sizes

What is Cable Tray? An Electrical cable tray is a type of a containment used to support insulated electrical cables used for power distribution, control, and



## Cable Tray Dimensions and Specifications as per NEC

Many electrical systems employ cable trays. They route cables safely & efficiently. NEC defines minimum cable tray size & electrical installation

## Cable Tray Size and Dimensions: How to Choose the

Learn how to calculate the perfect cable tray size and dimensions for your electrical project. This guide covers load capacity, fill ratios, and industry





## Cable Tray Dimensions Guide: Standard Sizes, Tray

Explore standard sizes by tray type, understand width and depth limits, and see how to calculate and choose compliant cable tray sizes for real projects.

## Cable Tray Systems: Requirements and Best Practices

Comprehensive guide to cable tray systems requirements: tray types, materials, loading, supports, bonding, routing, and best practices for safe electrical cable management.



## 12-SDMS-06

4 Design and Construction Requirements 4.1 General 4.1.1 Metallic cable trays shall specification in all respects. 4.1.2 The Metallic cable trays shall be manufactured in accordance with NEMA VE-1

## cable tray technical specifications

All light duty tray and accessories do not have a return edge. Also light duty tray of widths 150mm and un-der do not require the use of couplers as they have a swage joint.



## Cable tray manual

INTRODUCTION The B-Line series Cable Tray Manual was produced by our technical staff. We recognize the need for a complete cable tray reference source for electrical engineers and designers.



## Cable Tray Technical Guide A practical guide to product selection and

The Canadian Electrical Code, which publishes standards for electrical applications. Articles 12-2200 to 12-2210 cover various aspects of cable tray systems.



## Cable Tray Technical Guide A practical guide to product selection and

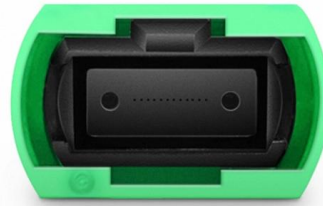
In designing supports for a cable tray system, consideration should be given to the loads associated with future cable additions and any additional loading that may be applied to the cable tray system (e.g.,





## Type of Cable Tray

Type of Cable Tray Introduction: Today cable trays have become a necessary part of industrial and commercial construction by offering quick, economical and flexible solutions to these problems.



## Cable Tray Dimensions and Specifications as per NEC

The entire amount of the cross-sectional areas for all of the single conductor cables that are going to be positioned in the cable tray needs to be

## Cable Tray Design and Standards Guide

1. The document outlines codes and standards that must be followed for design and construction of cable trays and their components. Standards listed include those



## Contact Us

---

For datasheets, pricing, or custom telecom energy solutions, please visit:  
<https://koskolong.co.za>