



Adam Tas Corridor Energy

Static IP Access to Huawei Core Switch





Overview

Set Device to Core, Subnet name to Manage_Net, VLAN ID to 4080, IP assignment to Manual, and IP address/Mask to 192. This document describes the management interfaces supported by switches and how to configure management IP addresses for switches. Configuring an IP address on a Huawei switch isn't just a technical checkbox—it's the foundation of a reliable, responsive network. For example: Replace USERNAME with the new username, set the password, define service-type (telnet, ssh, etc).



Static IP Access to Huawei Core Switch



Huawei Technical Support

This webpage provides cases for deploying networks using gateway, core switch, and access switch to enhance connectivity and efficiency.

Example for Configuring Static Routes for Interworking Between

Sx300 Series Switches Typical Configuration Examples (V200) Example for Configuring Static Routes for Interworking Between Different Network Segments Static Route Overview Static

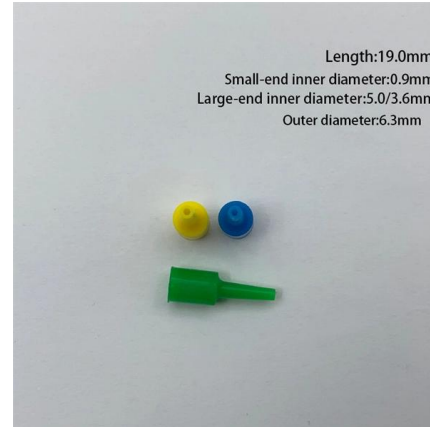


Configuring Static Routes

Wireless Access Controller (AC and Fit AP) V200R019C00 CLI-based Configuration Guide Configuring Static Routes Static routes are applicable to the networks with simple structures. Proper

Quora

Hier sollte eine Beschreibung angezeigt werden, diese Seite lässt dies jedoch nicht zu.



Management Interfaces and Management IP Addresses of S Series Switches

To manage a switch, you need to use its management interface and management IP address. This document describes the management interfaces supported by switches and how to configure

huawei switch cheat sheet - GitHub

Huawei Switch Discovery Tool: This tool can be used to discover Huawei network switches on a network. It can also be used to gather information



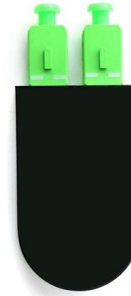
Static Route Configuration

This document describes IP Unicast Routing configurations supported by the switch, including the principle and configuration procedures of IP Routing Overview, Static Route, RIP, RIPng, OSPF,



How to Assign an IP Address in a Huawei Switch? Why

A correctly configured IP ensures your switch doesn't just function but thrives, whether handling VoIP calls without lag or isolating a compromised



Huawei Network Switch Configuration guide , Step-by-Step CLI

In this video, I walk you through the complete configuration of a Huawei S5700 switch, covering: System View Mode Hostname and VLAN Interface IP Addressing Access & Trunk Port Setup Static Routing

Example for Configuring an AP to Go Online Using a Static IP Address

WLAN V200R010C00 Typical Configuration Examples Example for Configuring an AP to Go Online Using a Static IP Address Service Requirements Administrators need to configure static



Network Admin's Must-Know: How to Change IP Address on Huawei

Whether you're troubleshooting connectivity issues or segmenting networks for enhanced security, mastering how to change IP address on Huawei switch proves critical.



DHCP Configuration on Huawei Switch - SYSTEMCONF

If you want to assign a static IP for your servers or special devices (fax, printer, etc.), you can do this with the command below. excluded-ip-address



Example for Configuring Internet Access Using Static IP Addresses

Example for Configuring Internet Access Using Static IP Addresses Specifications This example applies to all AR routers that support LAN interfaces of V200R003C00 and later versions.

Huawei Wireless Access Controller Configuration Guide

Huawei Wireless Access Controller Configuration Guide (ENSP) Packets transmitted on a WLAN include management packets (control packets)





302 Found

Please contact your Web Application administrator if this problem persists.

Example for Configuring Dual-Uplink Internet Access Using Static IP

Configure a static IP address for GE0/0/2 on link 2 so that intranet users can access ISP 2 using this static IP address through link 2. Configure outbound NAT in Easy IP mode on the two

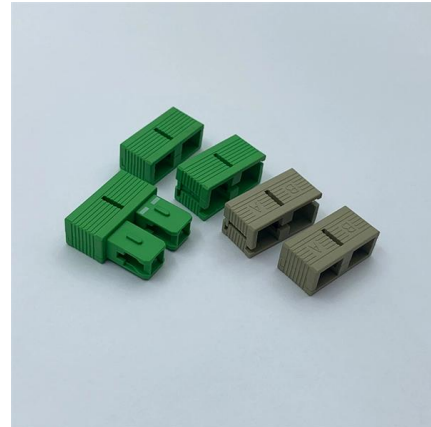


Example for Configuring IPSG Based on a Static Binding Table to

In Figure 14-16, hosts access the Internet through a switch. The gateway is the egress device of the enterprise network and all hosts on the network use static IP addresses. The administrator has

Huawei network switch S1700

While making an ICT inventory in an organization I came across a network switch that seems to be locked-down. This organization has a Huawei network switch 1700 series.



Huawei network switch S1700

While making an ICT inventory in an organization I came across a network switch that seems to be locked-down. This organization has a Huawei network switch 1700 series. But it doesn't



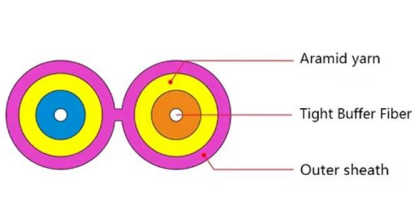
Configuring IP Addresses for Interfaces

(Optional) Configuring a Secondary IP Address for an Interface Context Generally, an interface needs only a primary IP address. In some special scenarios, you need to configure secondary IP addresses



Typical DHCP Configuration

In the DHCP Option template view, configure the startup configuration file for the static client IP phone, and specify the IP address of the FTP server for the IP phone.





IP Default Gateway on Huawei Switch? Define Your Network's

On a Huawei switch, especially when acting as a Layer 3 device or managing inter-VLAN routing, setting the correct IP default gateway tells the switch itself where to forward



Configuring Aggregation and Access Switches to Be Managed by the

The core switch must have IP addresses that can be dynamically assigned, so that access switches can obtain IP addresses when they go online for the first time in plug-and-play mode.

Basic CLI Commands on Huawei Switch

This text is a guide detailing Basic Command Line Interface (CLI) Commands on Huawei brand switches. It provides step-by-step instructions for users to perform



Unable to access the Internet when my router is using a static IP

Learn about 'Unable to access the Internet when my router is using a static IP address'. Find all usage guide, troubleshooting tips and resources for your HUAWEI product.

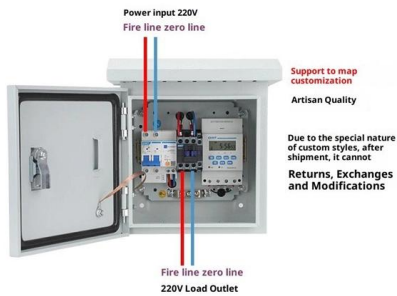


Example for Configuring IPSG to Prevent Hosts with Static IP

As shown in Figure 10-11, the user gateway is configured on the core switch (Core). An ACL is configured on the Core to allow fixed hosts to access the Internet. The hosts connected to the access



Product Wiring Diagram



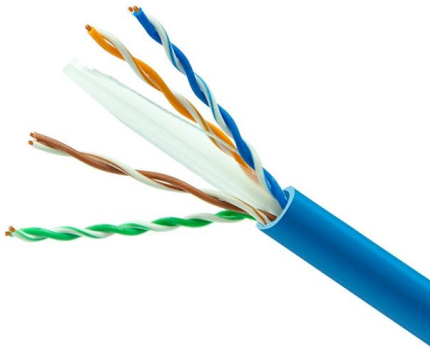
Example for Configuring Static Routes for Interworking Between

S600-E Series Switches Typical Configuration Examples Example for Configuring Static Routes for Interworking Between Different Network Segments Static Route Overview Static routes

Example for Configuring Internet Access Using Static IP Address (on

Networking Requirements In Figure 2-1, the router functions as the egress gateway of intranet users and obtains a static IP address from the carrier to provide Internet access for intranet users. The network





Unable to access the Internet when my router is using a static IP

2. Verify the static IP address The static IP address must be the same as what is provided by your broadband service provider. Consult your broadband service provider for more information. To check

Contact Us

For datasheets, pricing, or custom telecom energy solutions, please visit:
<https://koskolong.co.za>