



**Adam Tas Corridor Energy**

# **Substation 35kV bus voltage**





## Substation 35kV bus voltage

---



### Substations Volume I Design Parameters

substation. Substations should be designed, constructed, and operated to meet customers' needs at the lowest possible cost commensurate with the quality of service desired. The typical system may

### Electrical Primary Research and Design of 35 kV Substation

Electrical Primary Research and Design of 35 kV Substation Yuan Lijuan Sichuan Liangshan Power Supply Company, Liangshan, Sichuan 615000



### Design and electrical calculations for 110 (220)/35/10 kV

Primary substations in a network are used to step down a high voltage level in order to supply secondary substations by lower voltage. Usually they use

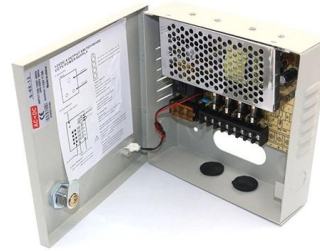


### Primary unit substations design guide

Primary unit substations are used to step down utility distribution voltages to in-plant distribution



voltages. Primary unit substation transformers are designed, manufactured and tested in accordance



## Industrial Control Systems Cyber Security Institute

Hier sollte eine Beschreibung angezeigt werden, diese Seite lässt dies jedoch nicht zu.

## Electric Design of 35kV Substation

Abstract: This paper made a design about a 35/10kV step-down substation according to the load of a town. The main technical focus is the primary electrical part design and a small part of the secondary



## SUBSTATION DESIGN CRITERIA DOCUMENT

The 110' x 144' substation yard will consist of two (2) incoming 34.5kV collector line feeders, each with circuit breaker protection feeding onto the substation bus and through a 69-34.5kV Power



## Low Loss Dry Type Power Transformer 11kV 35kV Non Flammable

The main products are: 35KV ring-net cabinet, 35 (10) KVC-GIS inflatable cabinet, photovoltaic (wind power) substation, pre-installed substation, inverter step-up machine, power transformer, ZTE8 fixed



## SUBSTATION DESIGN CRITERIA DOCUMENT

East Point Collector Substation will be designed and built to collect roughly 50MW of PV solar power located in upstate New York and transmit to a nearby 69kV interconnection point.

## 35kV Substation Electrical Design , PDF , Transformer

This document is a graduation thesis on the electrical primary design of a 35kV substation. It includes an abstract that outlines the design of a 35kV substation



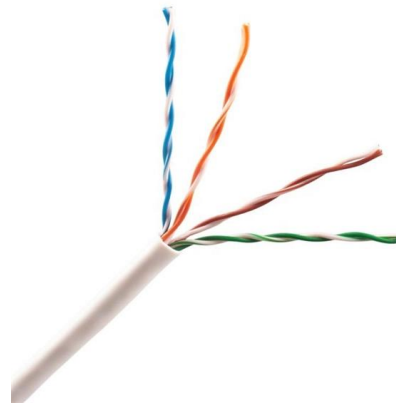
## (PDF) Design of 35kV Box Substation

In China, the current use of box-type substation is widespread, all walks of life are in use, box-type substation, also known as outdoor complete



## Transmission Owner Guidelines\_11142017

These set forth the service conditions, and establish insulation levels for overhead and underground lines and substations, and short circuit levels for substations. Specific component requirements are



**EFFICIENT FIELD TERMINATION**



- 1. PREPARE** - Strip and clean the fiber
- 2. INSERT** - Fast and easy insertion
- 3. LOCK** - Secure connection achieved

**No Polishing | No Epoxy**

Eliminates cable excess length and pigtail splice storage.  
Designed for high-efficiency onsite installation.

## Design of 35kV Box Substation

European prefabricated substation was formerly known as 'modular substation' in our country. It is a high-voltage switchgear, distribution transformer and low-voltage power distribution device arranged

## The essentials of LV/MV/HV substation bus overcurrent and

Substation bus and switchgear The substation bus and switchgear are the parts of the power system used to direct the flow of power to various feeders and to isolate apparatus and





## IEEE\_CED SubDesign

Substation - A set of equipment reducing the high voltage of electrical power transmission to that suitable for supply to consumers.

## SPECENERGO

Modular substations for a rated voltage of 35 kV are intended for receiving, converting and distributing electrical energy of an alternating three-phase current



## Exhibit B

The Substation Structural Steel Package shall include, but not be limited to, required steel designs and furnishing fabricated hot-dipped galvanized steel structures, both lattice and low profile types, bus

## Functional Specification for 15 kV, 25 kV, or 35 kV Underground

This allows one to describe bus common arrangements without creating or transmitting drawings. Typical model number arrangements follow; these may be modified to accommodate any possible

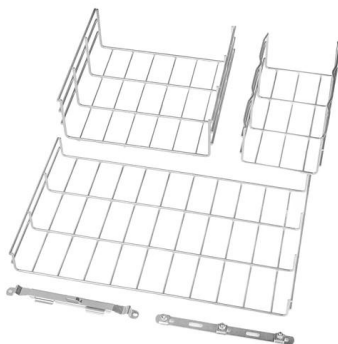


### Chapter III

The larger the ring bus the greater the probability becomes during normal operations, multi-system events and maintenance that the substation could become fragmented into multiple pieces thereby

### Electrical Design Of 132/33KV Substation

132/33 KV EHV substation The project work assigned to us was to design a 132/33 KV EHV substation. We considered incoming power at 132 KV



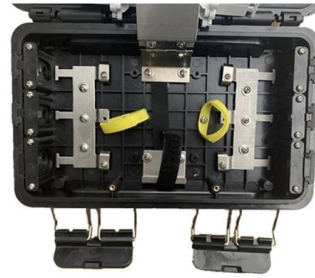
### Slide 1

A mimic bus is used in many substations to allow "remote" control to the circuit breakers, MOD's, circuit switchers and other devices. The mimic board is set up to represent (or mimic) the electrical layout of



## Design of 35kV Box Substation

It is a high-voltage switchgear, distribution transformer and low-voltage power distribution device arranged in three different compartments, through the cable or bus to achieve electrical

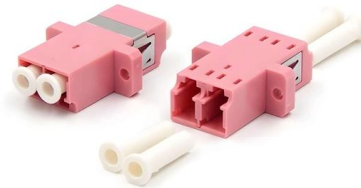


## 35kV Cable Bus Application , Eng-Tips

Anyone have any experience with using cable bus for 35kV applications with short distances? I'm looking at a preliminary design which uses (6) sets of

## 073131

This document defines the PG& E design criteria for physical/electrical arrangement for the bus configurations found in outdoor substations, unit substations, and switching stations. Underground



## SUBSTATIONS

Rated voltages (highest voltages for equipment) and the associated dielectric withstand requirements are defined in TS 1.0.



## Electric Design of 35kV Substation

This paper made a design about a 35/10kV step-down substation according to the load of a town. The main technical focus is the primary electrical part design and a small part of the secondary design in



## Design of 35kV Box Substation

European prefabricated substation was formerly known as 'modular substation' in our country. It is a high-voltage switchgear, distribution transformer and low-voltage power distribution device arranged

## Contact Us

---

For datasheets, pricing, or custom telecom energy solutions, please visit:  
<https://koskolong.co.za>