



**Adam Tas Corridor Energy**

# **Surge protector for single-mode fiber optic transceivers**





## Overview

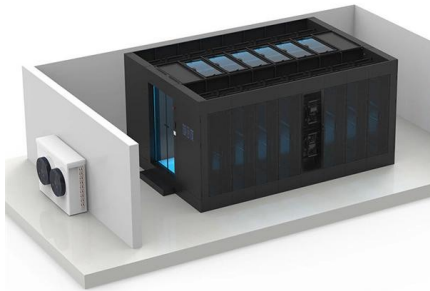
---

You can protect fiber, coax, and copper endpoints with IP55-rated surge protectors like SP-600J, TLP4BK, and Proxicast F-type arresters. 5 dB insertion loss, 75Ω for coax (5–2400 MHz), or fiber ports (LC/SC/SFP). The optical power surge protector is a two-fiber port module that has low insertion loss during normal operation, but suppresses an optical power surge quickly (about 100ns) and maintains a preset maximum allowed output power as long as the surge presents. The Insurance Institute for Business & Home Safety study found that \$26 billion dollars was lost due to. In a Power over Fiber (PoF) system, power and data are transmitted simultaneously over a single cable. Surge-related failures can cause network downtime and service interruptions, which may lead. 4-port Fiber Optic Transceivers with Built-In Power Supply/Charger for conventional Fiber or Hybrid Cable (fiber+copper) Application; 120W per port (480W total) Altronix NetWaySP4PX provides four (4) 1Gb SFP ports and four (4) power outputs (480W total power) to be transmitted over single. Their working principle involves rapidly discharging lightning currents, limiting overvoltage, and isolating metal connections to ensure equipment.



## Surge protector for single-mode fiber optic transceivers

---

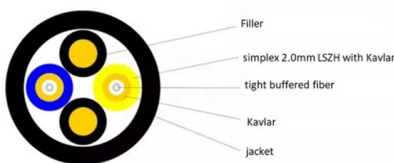


### SFP Transceiver Single Mode: High-Performance Solutions

What is an SFP Transceiver Single Mode LC Module? An SFP (Small Form-Factor Pluggable) transceiver single mode LC module is a compact, hot-swappable

### Complete Guide to Choosing the Right 100M Optical

Choose the right 100M optical transceiver by checking compatibility, fiber type, wavelength, distance, data rate, connector, and reliability.



### Voltage in Series and Parallel Circuits What You Need

Change in voltage series or parallel circuits: voltage splits in series, stays the same in parallel. Understand how this affects circuit design and safety.

### DC48V Optical Power Surge Protector

Power over Fiber Surge Protection In a Power over Fiber (PoF) system, power and data are



transmitted simultaneously over a single cable.  
When lightning surges



### Single-mode vs Multimode SFP Transceivers: A

Single-mode SFP and multimode SFP are the two main types of hot-pluggable optical transceivers used in fiber optic networks. Both of them use LC

### Practical Guide to Electrostatic Surge Protection for Fiber Optic

Within this blog we will combine the protection technology experience of Shanghai Leiditech Electronic, to reveal the key points and solutions for electrostatic surge protection in the circuit systems of



### DC48V Optical Power Surge Protector

Surge-related failures can cause network downtime and service interruptions, which may lead to costly repairs. That's why a PoF surge protector is needed to protect





## Fiber Optical Power Surge Protector - NanoSpeed(TM)

SKU: OPSP The optical power surge protector is a two-fiber port module that has low insertion loss during normal operation, but suppresses an optical power surge quickly (about 100ns) and maintains

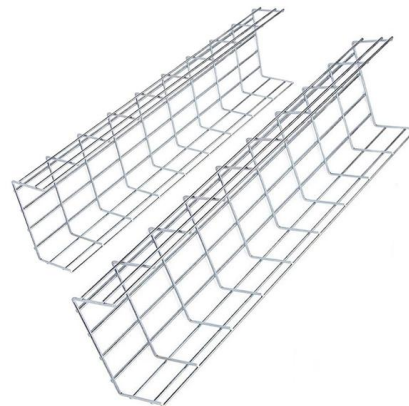


## Surge Protection for Fiber to the Home FTTH

This page discusses how to best protect your Fiber to the Home (FTTH) application and all associated components like the Rectifier, AC Power Panel, Transfer

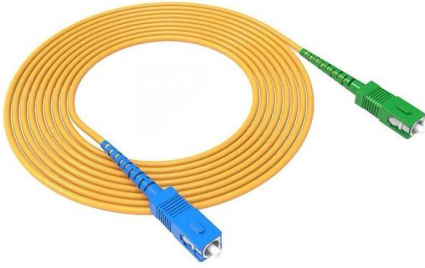
## Unmanaged Industrial Ethernet Switches 6 PORT INDUSTRIAL

6ES-4/5 is a 6 port industrial Ethernet switch featuring 2 fast fiber optic ports. It provides advanced performance for real-time deterministic operation and is ruggedized to provide superior reliability. This



## Surge Protection for Fiber to the Home FTTH

Selecting SPD for Fiber to the Home (FTTH) NEC/NFPA 70 require that Surge Protective Devices (SPDs) shall be UL1449 Listed. This means selecting a surge



## 10 Best Fiber-Optic Surge Protectors to Keep Your Network Safe and

Finding the 10 best fiber-optic surge protectors to shield your network from lightning and outages -- and which ones pros secretly prefer.

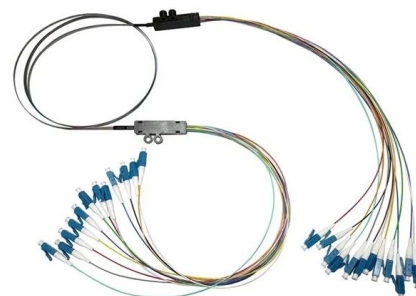


## Analog Devices ADM3057E: High-Speed CAN Transceiver

The ADM3057E is a high-speed CAN transceiver with 12 Mbps data rate, 3 kVRMS isolation, and support for CAN FD up to 5 Mbps.

## SFP-1G-SX Explained: The Essential Guide to 1G

This guide dives deep into the SFP-1G-SX transceiver, the industry-standard solution for 1 Gigabit short-range fiber optic connections. Learn about its





## Huber+Suhner's EMP Protector , ODG



Huber+Suhner's EMP protectors provide exceptional defense for critical radio equipment from environmental and electrical hazards.

## SINGLE-MODE FIBER OPTIC CABLE

46028 - MONOPRICE SINGLE-MODE FIBER OPTIC CABLE - LC-LC UL 3MM 9/125 OFNR DUPLEX YELLOW. \$16.27 · same-day shipping from Aztek Computers.



## NEW PolyPhaser Fiber Interconnects

Offering innovative, reliable, dynamic RF surge protection and filtering solutions, including DC Pass, DC Block, Bias T and Ultra Low PIM. We ship same day.

## Fiber Optic Surge Protectors Gain Importance Amid Expanding Networks

These voltage spikes can disrupt normal operation of optical communication systems. Fiber optic surge protectors were developed specifically to mitigate such damage, ensuring the



### **Surge Protectors for PoE Networks , Eaton**

Need Help Finding Power over Ethernet (PoE) Surge Protectors? Tripp Lite PoE Surge Protectors for indoor or outdoor use protect edge network devices, including PoE cameras and LAN access points,

### **Surge Protectors - Fosco Connect**

Surge Protectors We provide surge protection solutions for several of most used types of copper media, like: Cat5, Cat5e, Cat6, twisted pair and coax cables. Our selection of surge protectors apply to



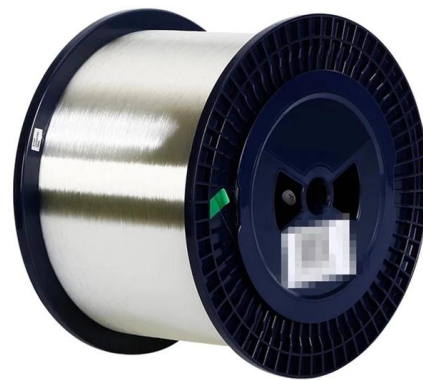
### **Fiber Optic Cable Market Size**

Single-mode maintained 72.38% of global shipments in 2025, cementing its status as the workhorse for long-haul, metro, and fiber-to-the



### Surge Protectors - Fosco Connect

We provide surge protection solutions for several of most used types of copper media, like: Cat5, Cat5e, Cat6, twisted pair and coax cables. Our selection of surge protectors apply to telephone lines,



- IP65/IP55 OUTDOOR CABINET
- WATERPROOF OUTDOOR CABINET
- 42U/27U
- OUTDOOR BATTERY CABINET

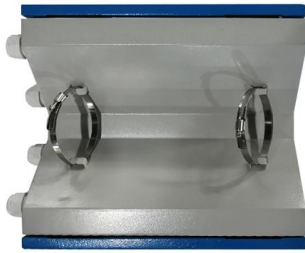
### 100M/1000M Industrial POE Switch 1 Optical Port + 4 Ports, Single-Mode

Fiber Port Type: LC/SC Ethernet Port Rate: 10/100/1000M Adaptive Transmission Distance: Depends on the SFP Module Power Specification: DC 48-57V Feature Full series of

### SEL-2830 Single-Mode Fiber-Optic Transceiver/Modem

Improve safety, signal integrity, and reliability by using two optical fibers instead of wire to transfer bidirectional serial data using single-mode optical fiber.





## Altronix Products

Altronix NetWaySP4PX provides four (4) 1Gb SFP ports and four (4) power outputs (480W total power) to be transmitted over single, multi-mode fiber as well as Hybrid Cable (fiber + copper

## Gigabit Industrial POE Web Managed Switch 2 Optical + 8 Ports Mode

Gigabit Industrial Poe Switch, Gigabit Industrial Switch, Dual-Series Design: Features dual-series design with SC fixed optical ports and SFP modular optical ports for flexible configuration.



## Altronix Products

Altronix NetWaySP4PX provides four (4) 1Gb SFP ports and four (4) power outputs (480W total power) to be transmitted over single, multi-mode fiber as well as Hybrid Cable (fiber + copper combined) to

## 1G SFP Modules: A Deep Dive into Specs & Types

In addition, MMF has a larger core size, allowing for better alignment of the optics when connecting the transceivers into the equipment, which makes the actual



## 10 Best Fiber-Optic Surge Protectors to Keep Your Network Safe and

You can protect fiber, coax, and copper endpoints with IP55-rated surge protectors like SP-600J, TLP4BK, and Proxicast F-type arresters. Choose units with <math><0.5\text{ dB}</math> insertion loss, 750 for

## Contact Us

---

For datasheets, pricing, or custom telecom energy solutions, please visit:  
<https://koskolong.co.za>