



Switch Electrical Port to Optical Port Converter

What is an Optical to Electrical Transceiver and How



Optical to electrical transceiver, that is, the electrical port transceiver, is an optical transceiver with an electrical interface (RJ45), in line with the MSA

What is Differences Between Switch Optical Ports and Ethernet Ports

Ethernet ports on switches already integrate Ethernet port modules internally, eliminating the need for optical-electrical conversion. These ports utilize RJ45 interfaces and simply require



Ethernet to Fiber Media Converter

The Ethernet to Fiber Media Converter is a device that enables the connection between copper-based Ethernet devices and fiber optic networks.

SEL-2725 Five-Port Ethernet Switch , Schweitzer Engineering

The SEL-2725 is an unmanaged five-port switch and copper-to-fiber media converter. Apply to



build reliable, safe Ethernet networks in electrical substations, plants, and other mission critical sites.



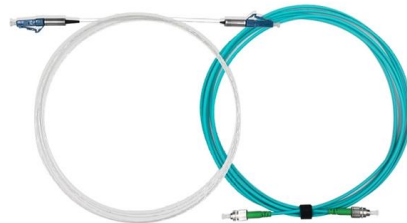
Electrical To Optical Media Converter

Uses customer-installed ComNet SFPs for compatibility with a wide range of optical fibers, optical connector types, and optical transmission distances of up to 120 km



Differences Between Electrical Port Modules And Optical Port Modules

An electrical port module, also known as an optical-to-electrical port converter module, is a hot-swappable device with an SFP form factor. It features an RJ45 connector and uses UTP cables as



3-Port Fiber Optic Ethernet Media Converter Switch

The TC3240 4-port Switching/Bridging Fiber Optic Ethernet Media Converter converts or connects UTP (10/100Base-TX) networks to Fiber Optic (100Base



Media converters

FO media converters for Ethernet and fieldbus enable you to convert your copper interfaces to interference-free fiber optics without the need for complex surge protection, shielding, and



OFC Media Converter

Our media converters provide an easy and economical solution to upgrade a copper based network to fiber optic to extend the signal reach, or to bridge copper and



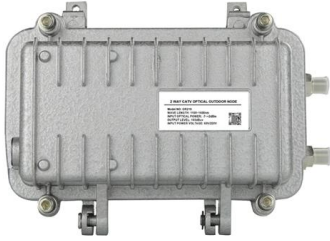
Fiber Optic Media Converter

What is a Fiber Optic Media Converter? A fiber optic media converter is a device that converts electrical Ethernet signals (copper) into optical signals (fiber) and vice versa. It allows devices with RJ45 ports



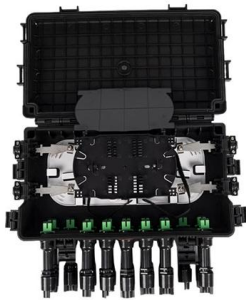
Gigabit Ethernet Fiber, Switch 8 Optical Port 2 Electrical

Gigabit Ethernet Fiber, Switch 8 Optical Port 2 Electrical Port Up To 120km, RJ45 Port SFP Fiber Media Converter, Efficient Transmission Router



OFC Media Converter

OFC Media Converter Our media converters provide an easy and economical solution to upgrade a copper based network to fiber optic to extend the signal



Fiber Optic Media Converter 10/100m Optical Fiber

8 port RJ45 10/100/1000 Ethernet Fiber Media Converter Realsea Single Fiber SM 1 Fiber 8 RJ45 Switch Description Fiber Media Converter is the conversion

Media Converter 8 Port, 8 Port Media Converter

10/100/1000M 2 Fiber Port 8 RJ45 Media Converter An 8-optical and 2-electrical all-GIGABit fiber aggregation switch provides eight 1.25G cascading optical ports





8 Fiber Port & 2 UTP lan port Fiber optic ethernet switch

Multi-gigabit optical aggregation series is my company based independent software research and development from a fiber aggregation switches, which have 8 *

New Trench Media Converter Single-Mode 1 Pair Ethernet To

An RJ45 ports and a single-fiber SC optical port, to achieve optical signal conversion between 10/100base TX twisted pair, (Ethernet)and 100base FX (fiber optic). single mode SC fiber media

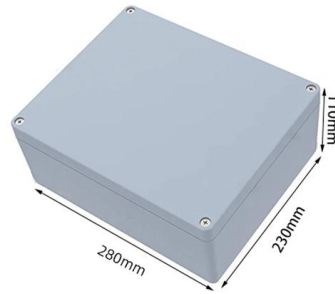


What Is the Optical Audio Port, and When Should I Use It?

The optical audio port, also known as TOSLINK, can be useful for connecting older sound systems or linking devices like soundbars to TVs.

Estink SFP Ethernet Fiber Optic Switch, 1000m Ethernet

Up to 120km : Fiber transceiver provides multiple Gigabit SFP



Electrical To Optical Media Converter

Uses customer-installed ComNet SFPs for compatibility with a wide range of optical fibers, optical connector types, and optical transmission distances of up to 120 km Link Fault Pass-Through feature



Fiber Optic Media Converter

Connect After completing the pre-installation preparations as described above, power off all devices and connect the fiber optic media converter to Ethernet devices according to the specified network



Industrial Ethernet Media Converter 10/100 Mbps RJ45 /

This hardened media converter module allows a 10Base-T and 100Base-TX Ethernet signal conversion: 100Base-FX over 2 optical fibres. Half and full-duplex modes.



Hardened 10/100/1000 PoE Media Converter, 100 or 1000 SFP

The Comnet CNMC2SFPPoE is part of the CNMCSFP series of electrical-to-optical Ethernet media converters. It converts a 10/100/1000 Mbps electrical input to a 100 or 1000 Mbps optical output, and

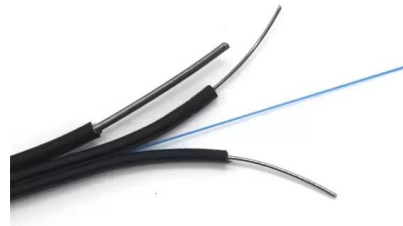


Fiber Optic Network Switches , Ethernet to Fiber

VERSITRON manufactures a wide range of fiber optic switches that provide links for your 10Base, 100Base, 1000Base Gigabit, and 10 Gigabit networks

What is an Electrical to Optical Converter?

Electrical to optical converters work by converting electrical signals into optical signals. The conversion process involves the modulation of an electrical signal onto a light source, typically a



Optical-electrical converter

MWF201 series serial to fiber converter is designed to realize long-distance transmission of 1 RS232/485/422 serial port through optical fiber for industrial sites.



Introduction of Two Optical Ports and the Role of Optical

A lot of customers in the purchase of industrial Ethernet switches will ask how many optical and electrical ports of switches, but also will ask what the



How To Use A Fiber Optic Media Converter In Your

In most cases, fiber optic media converters convert between copper and fiber optic cables. This allows you to connect devices that use different types

Ethernet to Fiber Optic Converters (Point to Point)

Our rugged, industrial-grade, point-to-point Fast and Gigabit Ethernet to fiber optic converters work in pairs to extend 10/100/1000M Ethernet signals over long distance.





Connect electrical gigabits ports with optical ports

Assuming it's connecting them, then you can't do it directly. You need to have the correct media and speeds to do it. Typically with fiber you have an SFP (or GBIC) to plug in and adapt to

Contact Us

For datasheets, pricing, or custom telecom energy solutions, please visit:
<https://koskolong.co.za>