



**Adam Tas Corridor Energy**

# **Switch Optical Ports and Configuration**





## Switch Optical Ports and Configuration

---

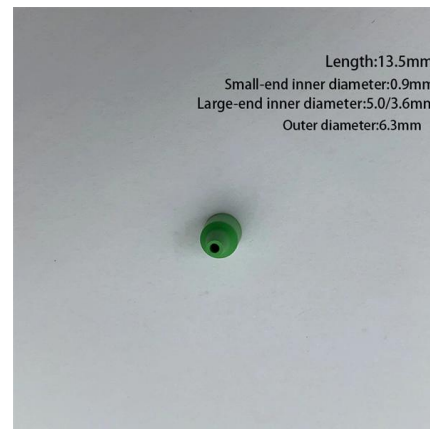


### Optical Switch Multichannel Single Mode Multi Mode

The 1 x 12 Optical Switch is equipped with one common optical port (A1) that can be linked to a choice of up to 12 optical ports (B1 to B12). Each port has two isolated channels, Tx and Rx, which are

### How to connect a new optic fibre to an ethernet switch

As we speak I just have optic fibre (Community Fibre) connected to my Huawei modem / Linksys Velop which will be connected to a new POE switch (need to identify the best model to be



### View the Optical Module Status on a Switch through the Command

Once the transceiver and fiber optic cable are plugged in properly in the switch optical module, you should be able to view the current information for the optical connection, which helps

### Cisco Products: Networking, Security, Data Center

Explore Cisco's comprehensive range of products, including networking, security,



### Port Physical Characteristic Configuration Commands

The gigabit optical interface enables auto-negotiation function by default. The optical/electric port cannot support the gigabit and full-duplex at the same time.



### Optical Switch Multichannel Single Mode Multi Mode

Switching Configuration for 1 x 12 Switch The 1 x 12 Optical Switch is equipped with one common optical port (A1) that can be linked to a choice of up to 12 optical ports (B1 to B12). Each port has two



### Configuring Attributes for an Optical Interface

The configuration is automatically delivered to the new member switch without manual intervention. However, the new member switch takes a longer time to start than other member





## What is Differences Between Switch Optical Ports and Ethernet Ports

Switches come in three types: those with purely Ethernet ports, those with purely optical ports, and those with a combination of both. Port types are limited to two: optical and Ethernet.



## Optical Switches: Applications and Requirements

Explore the applications of optical switches in optical path provisioning, protection switching, packet networks, and modulation, focusing on their switching time and port requirements.

## Buy Cisco 40G Optical Modules , Price, Stock & Compatibility

Cisco 40G Optical Modules are used for 40 Gigabit Ethernet links between compatible Cisco switches, routers, and data center platforms. They are common in aggregation, spine, core, and high



## Optical Switching Basics: Types and Technologies

Explore the fundamentals of optical switching, including space, wavelength, time, and hybrid switching techniques. Learn about core components and applications.



## Cisco Nexus 9508 NX-OS Mode Switch Hardware Installation Guide

To prevent an IP address conflict, do not connect the management port until the initial configuration is complete. For more information, see Creating the Initial Switch Configuration.



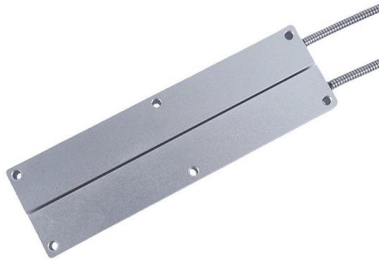
## Optical Switches , Keysight

Switch configuration: The routing logic--such as 1xN, Nx1, 2x2, or MxN matrix--defines how signals are directed between ports. For example, a 1xN switch routes a single source to multiple destinations,

## What is Differences Between Switch Optical Ports and Ethernet Ports

Common optical port types for switches include 155M, 1.25G, 10G, 25G, 40G, and 100G.  
>>>Read More:What is the difference between SFP+ high speed cable SFP+ electrical port





## Configuration Guide for Cisco NCS 1001, IOS XR Release 7.3.x

From release 6.5.1, there are different ports from the ethernet switch MGMT RJ45, and Optical SFP MGMT to the CPU. The two different Management Ethernet interfaces in to XR are:

## Configuration Guide for Cisco NCS 1001, IOS XR Releases 7.5.x and

When you plan to replace a configured optical module with a different type of optical module, you must clear the configurations of the old module before you install the new module. For



## Connecting Mikrotik With Fiber Optic

Stripping is the act of removing the protective polymer coating around optical fiber in preparation for fusion splicing through a mechanical stripping device similar to a wire-stripper.

## Configuring Attributes for an Optical Interface

The configuration personnel can pre-configure the transmission medium type on optical interfaces and configure functions on the interfaces. These functions take effect after the installation personnel



### **Dell Networking PowerSwitch Layer 1 optical troubleshooting**

The purpose of this guide is to provide general guidelines for troubleshoot layer 1 connectivity issues when using transceivers in Ethernet switches.

### **Large-Scale and Simple-Configuration Optical Switch Enabled by**

We propose a novel optical switch architecture for intra-datacenter interconnection. The proposed switch consists of asymmetric-port-count delivery-and-coupling (DC) switches and



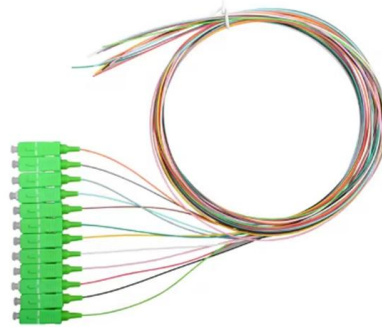
### **Cisco Catalyst PON Series Switches Hardware**

The PON technology is based on the ITU-T G.984 standard. PON transmits Ethernet, Asynchronous Transfer Mode (ATM), and Time Division



## How to Use the Optical Out (S/PDIF) Port on Your PC

Learn how to make use of the Optical Out (S/PDIF) port on your PC to set up an audio connection, and enjoy the best your audio system can offer.



## How to Connect an Optical Cable to a Switch: A Step-by-Step Guide

For those who are new to the world of optical cables or simply looking to connect one to a switch, this step-by-step guide will provide you with all the necessary information and instructions to

## Understanding SFP Port: A Guide to Gigabit Ethernet

A: An RJ45 port is a standard Ethernet port that uses copper cables, while an SFP port is a modular interface that allows for different types of lines,



## Connecting Fiber Optic Cable with Ethernet Ports for

Unlock the potential of your network by integrating fiber optic cable with Ethernet ports. Experience high-speed data transmission, improved network



## Dell Networking PowerSwitch Layer 1 optical troubleshooting

Dell does not guarantee that third party or unqualified optics work reliably, or at all. Configuration considerations Port speed, negotiation, and FEC settings must match across the link. For example, if



## Contact Us

---

For datasheets, pricing, or custom telecom energy solutions, please visit:  
<https://koskolong.co.za>