



**Adam Tas Corridor Energy**

# Switch PoE Port Configuration





## Switch PoE Port Configuration

---

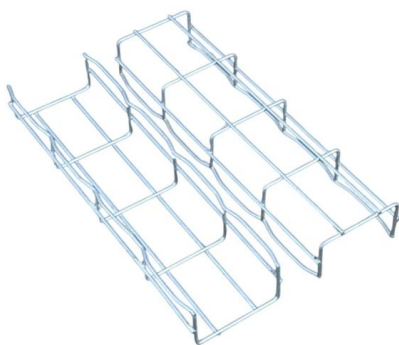
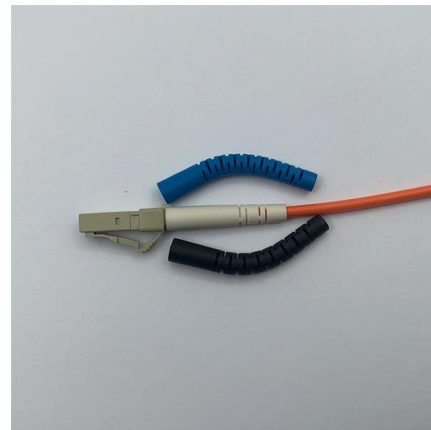


### Interface

The switch uses these protocols and standards to support PoE: CDP with power consumption--The powered device notifies the switch of the amount of power it is consuming. The switch does not reply

### MS210 Overview and Specifications

Overview Cisco Meraki MS210 stackable switches provide basic Layer 3 connectivity ideal for branch and campus deployments. The MS210 series features a variety of power options designed to meet



### Unmanaged Industrial POE Switch Market , Size & Outlook 2035

Unmanaged Industrial Poe Switch Market Port Configuration Insights The Global Unmanaged Industrial POE Switch Market, particularly within the Port Configuration segment, showcases a diverse

### PoE Port Configuration

Use the PoE Port Configuration page to configure PoE (Power over Ethernet) settings on interfaces. To access this page, click System > PoE > Port



Configuration in the navigation menu.



### TL-SF1008P

What This Product Does TL-SF1008P is an 8 10/100Mbps ports unmanaged switch that requires no configuration and provides 4 PoE (Power over Ethernet) ports. It can automatically detect and supply



### Enabling PoE on EX Series Switches (CLI Procedure) , Junos OS

To enable PoE on all PoE-capable ports on a switch, use the set poe interface all configuration command. EX4600 switches support PoE only in a mixed Virtual Chassis with EX4300 switches.



### EDIMAX

Our products are distinguished by their cost-effectiveness and clear support and warranty conditions. The complete products range consists of SMB Wireless





## Configuring PoE on MS switches

This article is intended to provide an overview of the general configuration of PoE on Meraki switches from the Meraki Dashboard.



## Interface and Hardware Components Configuration Guide, Cisco IOS

If the switch detects a fault caused by an undervoltage, overvoltage, overtemperature, oscillator fault, or short-circuit condition, it turns off power to the port, generates a syslog message,

## Cisco Products: Networking, Security, Data Center

Explore Cisco's comprehensive range of products, including networking, security, collaboration, and data center technologies



## Cisco Industrial Ethernet 3000 Layer 2/Layer 3 Series

This data sheet describes the benefits, specifications, and ordering information for the Cisco Industrial Ethernet 3000 Series Switches.



### Hikvision 4port Poe+ Network Switch for sale

Port Configuration: (4 times 10/100) Mbps PoE ports + (2 times 10/100) Mbps RJ45 uplink ports. PoE Standards: Supports IEEE 802.3af and 802.3at. Power Output: Max. 30W per single port;



### Interface

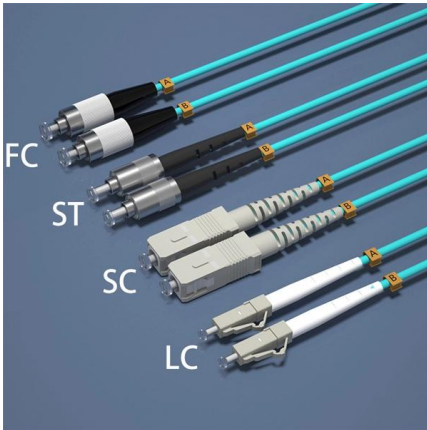
The switch detects a Cisco pre-standard or an IEEE-compliant powered device when the PoE-capable port is in the no-shutdown state, PoE is enabled (the default), and the connected device is not being



### Amazon : Poe Switch

Shop managed and unmanaged PoE switches with varying gigabit port configurations. Build your network with flexible connectivity solutions.



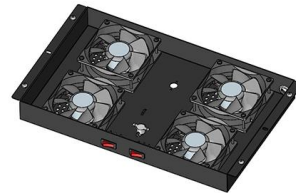


## PoE Switch Tutorial: Simplifying Network Power

Depending on the switch, you may need to configure settings, such as VLANs, QoS, or port-specific power allocations. Access the PoE switch's

## How to Enable PoE on Cisco Switch , Standards

This 2025 guide explains how to enable, verify, and optimize PoE on Cisco switches, including standards, power budgeting, configuration commands,



## How To Configure PoE On A Network Switch?

Enable PoE on Ports: Most PoE switches have PoE disabled by default on each port. Navigate to the PoE settings section of the configuration interface and enable PoE on the ports

## Configuring PoE

However, perform this task to configure a PoE port for a higher priority, to make it data only, or to specify a maximum wattage to disallow high-power powered devices on a port.



## TSW202 PoE+ managed Ethernet Switch

TSW202 is a managed PoE+ Ethernet switch, designed to provide granular network management capabilities while centralising power distribution. This PoE+ switch

## Configuring PoE Interfaces on EX Series Switches , Junos OS

You can configure the power priority for a PoE port. If a situation arises where there is not sufficient power for all the PoE ports, the available power is directed to the higher priority ports, while power to



## HPE Aruba Networking CX 6000 12p Class4 SFP 1G 139W TAA Switch

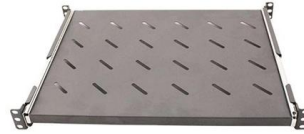
HPE Aruba Networking CX 6000 12p PoE 139W TAA Switch provides compliant, reliable PoE access for regulated networks. Secure enterprise connectivity today.





## Cisco Catalyst C2960-48PST-L 48-Port PoE Switch

When you buy from Intelligent Servers, the Cisco Catalyst C2960-48PST-L 48-Port PoE Switch comes with a market leading three year warranty including remote setup and support. You can save up to



## Configuring PoE Interfaces on EX Series Switches , Junos OS

Power over Ethernet (PoE) ports on EX Series switches supply electric power over the same ports that are used to connect network devices. These ports enable you to plug in devices that require both

## Configuring Power over Ethernet

The switch detects a Cisco prestandard or an IEEE-compliant powered device when the PoE-capable port is in the no-shutdown state, PoE is enabled (the default), and the connected device is not



WebiTelecomms Cabling

## Configuring PoE

Information about PoE Power over Ethernet Ports  
A PoE-capable switch port automatically supplies power to one of these connected devices if the switch senses that there is no power on the circuit:



## Contact Us

---

For datasheets, pricing, or custom telecom energy solutions, please visit:  
<https://koskolong.co.za>