



**Adam Tas Corridor Energy**

# Switch optical port light failure





## Overview

---

Use the Console to confirm if the corresponding port is LinkDown using the show interface status command. SFP issues are among the most common and frustrating problems in fiber optic and Ethernet networking environments. Whether you are dealing with a no link light, intermittent connectivity (link flapping), or a transceiver not detected error, the root cause is often not immediately obvious. Right now, I can't get a lot of equipment to connect all with SFP-LH-SMD transceivers. However, in actual deployment and operation and maintenance processes, optical link failures such as optical module docking failures and port Down often occur, which not only cause data transmission interruptions but may also affect business continuity. It flashes green during the initialization phase, remains solid green after successful initialization, and turns red when a system fault occurs. You need a clear, step-by-step SFP troubleshooting guide that helps you restore connectivity quickly and confidently.



## Switch optical port light failure

---

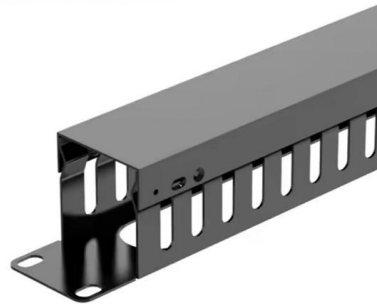


### Common problems and solutions in the installation and

50/125u, while the single-mode optical fiber jumper jacket is printed with the words G652d or 9/125U; Self-loop check: the transmitter and receiver of

### SFP Problems

Right now, I can't get a lot of equipment to connect all with SFP-LH-SMD transceivers. This is a high-level summary of the situation, but it's really strange (and YES, I have swapped the



### Troubleshoot Switch Port and Interface Problems

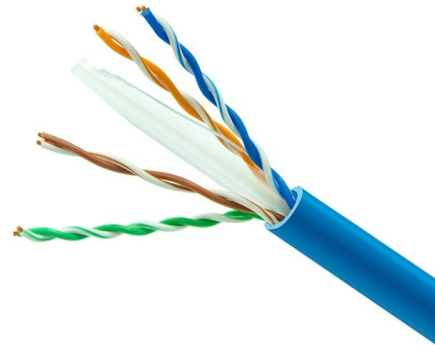
This document describes how to determine why a port or interface experiences problems.

### Addressing SFP Failures: Fix Your Malfunctioning SFP

Have you ever plugged an optic SFP transceiver but discovered that the connection didn't work?



SFP failure may be caused by several aspects. Here



### Troubleshooting &nbsp; [Cisco Catalyst 2960-X Series

The LEDs on the front panel provide troubleshooting information about the switch. They show POST failures, port-connectivity problems, and overall switch

### Fault summary of fiber optic transceivers

Fiber optic transceivers are essential components in modern network infrastructures, facilitating the conversion and transmission of data between



### Optical Module Common Failure Of Optical Power

The article Digital Diagnostic Function (DDM) For Optical Modules describes that DDM function can be used for real-time monitoring and fault location of the



## Common Problems And Solutions When Using Optical

As a more sensitive optical device, optical modules sometimes have some problems during use. Below, Telecomate will list some common problems and

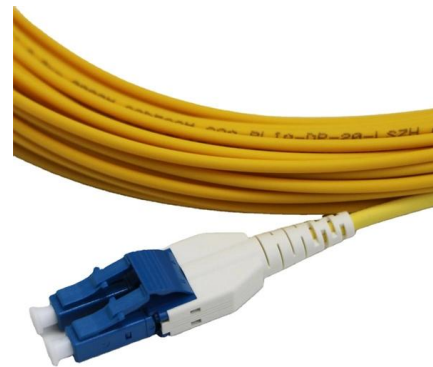


### Optical ports not working , Switching

We are experiencing issues with our optical ports between QFX5100 and EX4300 since we rebooted our EX4300 switch. On our EX4300 the switch port is showing as down when I look at the status and the

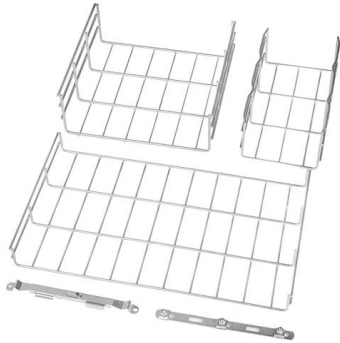
### Troubleshooting and Repairing Optical Transceiver Failures in

Have you ever experienced an unexpected network outage due to the failure of an SFP/SFP+ optical transceiver?



### Troubleshooting

Diagnosing Problems The LEDs on the front panel provide troubleshooting information about the switch. They show POST failures, port-connectivity problems, and overall switch performance. You can also



## Optical Link Failure Troubleshooting: Switch-to-Switch (SMF/MMF)

This article will elaborate on the core influencing factors, common causes, and targeted troubleshooting steps of optical link failures between switches, providing practical guidance for operation and



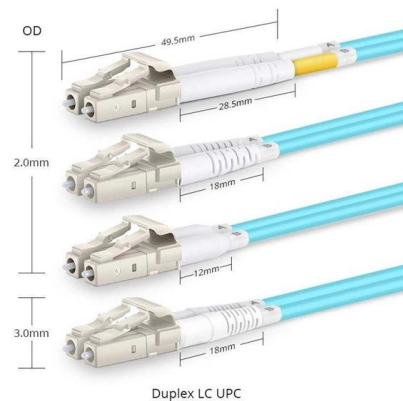
## SFP Issue: Causes, Fixes, and Troubleshooting Guide

Learn how to fix SFP issues fast: no link light, link flapping, detection errors, compatibility problems, and optical power checks.



## Common Optical Transceiver Failures and Effective Troubleshooting

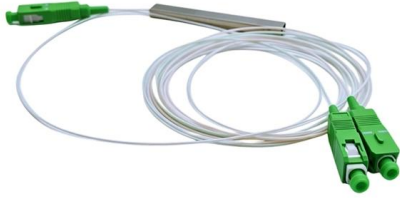
Introduction: Why Optical Transceiver Reliability Is Critical As core components in high-speed data networks, optical transceivers enable communication between switches, routers, and





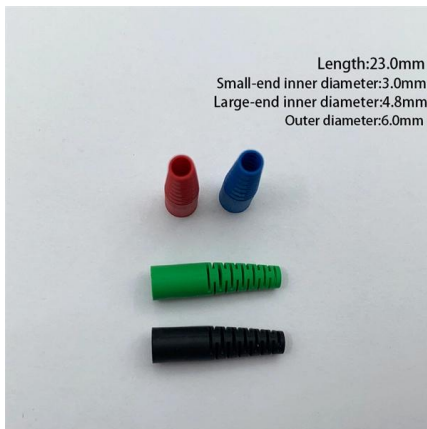
## SFP Issue: Causes, Fixes, and Troubleshooting Guide

SFP issues are among the most common and frustrating problems in fiber optic and Ethernet networking environments. Whether you are dealing with a no link light, intermittent



### 5 troubleshooting tips for connecting the SFP's

In summary, make sure that you know what you are doing when plugging in SFP+ modules and fibre optic cables. It may look simple, but transceivers and ports are



### How do I troubleshoot an OLT device?

Per port LEDs check the status of each customer-facing port. Dark ports indicate a problem with connectivity to those optical network terminals. Any anomalous LEDs point to areas for

### 5 troubleshooting tips for connecting the SFP's

Here are 5 troubleshooting tips for connecting the SFP's. Have you ever tried to plug an optic SFP+ transceiver into an SFP+ port to discover that the connection didn't



## Troubleshooting the Optical Network Terminator (ONT)

Check that the other end of the broadband cable is correctly inserted into one of the ports on the Optical Network Terminator (ONT). This will usually be Port 1. If the

## Optical Module Application: Common Problems & Troubleshooting

Example: After installing an SFP-10GB-SR module into a Cisco 4500 switch, use CLI commands to check whether the module is recognized. If the switch fails to detect the module



## SFP Troubleshooting Tips

Troubleshooting optical transceivers involves identifying and resolving issues that may affect the performance of the device.



## Fiber ONT Troubleshooting , BroadbandSearch

What Is an ONT? An ONT converts the fiber-optic light signals from your internet provider into electrical signals your home network can use. Think of it as the bridge between the high-speed

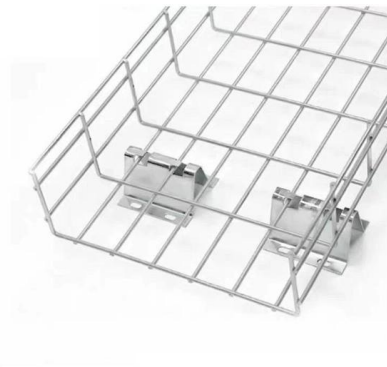


## Optical Module Application: Common Problems & Troubleshooting

Based on typical issues encountered with optical modules in daily switch applications, this document summarizes basic troubleshooting steps for resolving common faults:

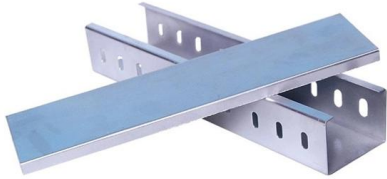
## SFP Troubleshooting Guide for Common Network Issues

When a switch refuses to detect a module, a link light won't illuminate, or performance degrades without warning, you need more than guesswork. You



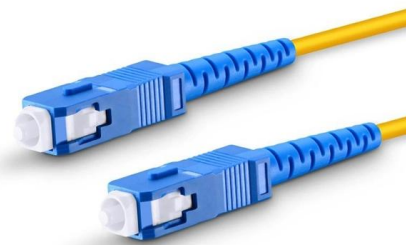
## Troubleshoot Switch Port and Interface Problems

An obvious but sometimes overlooked cause of port connectivity failure is an incorrect configuration on the switch. If a port has a solid orange light, this means the software inside the



### **S3100 Series Switches Troubleshooting Guide , FS**

If the issue is with the optical module, use a blower (e.g., a rubber bulb) or strong wind (e.g., from a fan) to blow or suck the TX and RX ports of the optical module, then test the connection status of the



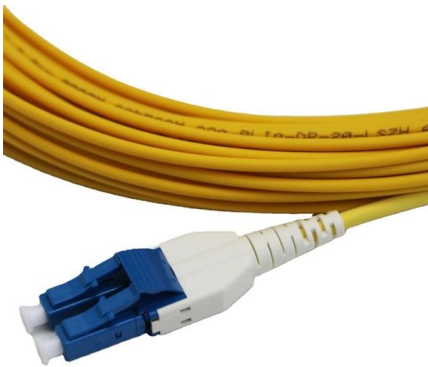
### **DwyerOmega , Shop for Sensing, Monitoring and**

Explore DwyerOmega's comprehensive range of industrial sensing, monitoring, and control solutions from thermocouples to pressure transducers engineered for

### **Troubleshooting Fiber Cables : r/networking**

Plug the cable in to both switches and turn the ports on. Do a: show interface EthX/Y transceiver detail You should get back some data about the optic like temperature, voltage, and light levels. You'll want





## **View the Optical Module Status on a Switch through the Command**

Once the transceiver and fiber optic cable are plugged in properly in the switch optical module, you should be able to view the current information for the optical connection, which helps

## **Contact Us**

---

For datasheets, pricing, or custom telecom energy solutions, please visit:  
<https://koskolong.co.za>