



Adam Tas Corridor Energy

Switch port aggregation is not working





Overview

If conditions permit, replace other member ports, confirm whether the aggregation member port can be up, and exclude the member port from physical failure. Link aggregation means combining two or more separate cabled links into a single logical channel. For example, a single network adapter and cable segment might support 1 Gbps; bonding this with another adapter and cable segment gives a link of 2 Gbps. The customer wanted 25G ports between his buildings and went with the pro aggregation switches and some SFP28 modules (ESR (300m)). Just switching over to the 10G ports the module works fine with 10G over the same OM4 cable. I want the DS920+ to communicate with three VLANs - I can do that by duplicating and editing the "bond1" file if I set up link aggregation first.



Switch port aggregation is not working

Chapter18:Link Aggregation Configuration



Port aggregation supports the following operation modes and functions: Static aggregation control After the settings of physical ports are bound to a logical port, you need not worry

Switch LACP Troubleshooting , FS

If the member port is down, check the physical port connection. Make sure the member is up. If conditions permit, replace other member ports, confirm whether the aggregation member port can be



Cisco 9300 Port Channels and link Aggregation not working as

Hello, I have 2 new Cisco 9300 switches. I am testing creating a Channel for port 1 and 2 on each switch. My understanding is that I should have 1GB per port so 2GB total linking the 2

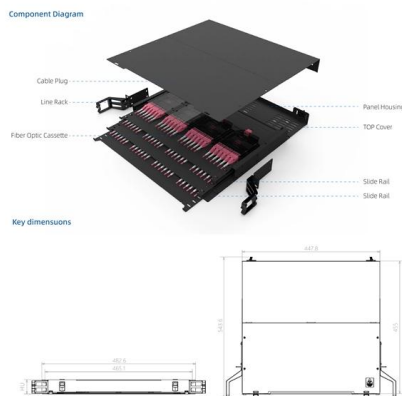
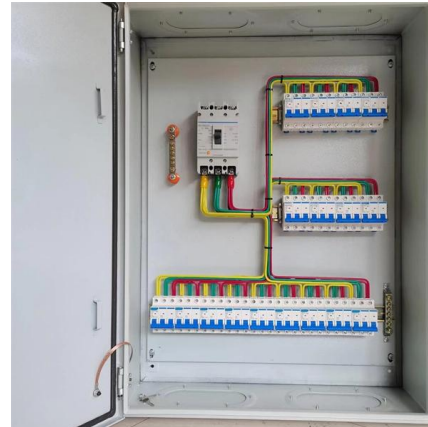


Cisco 9300 Port Channels and link Aggregation not working as

I expected the speed results to be 15-20Mbps due to the 2x 10Mbps ports but I am only getting



9Mbps. It appears that only one port is being used in the Channel although both are connect



Link Aggregation and LAG/LACP not working

I have a DS920+ and a Netgear GS308T managed switch connected to a Synology RT6600ax router configured with several VLANs. I want the DS920+ to communicate with three

Switch Port Configuration and Troubleshooting

Link aggregation can also be used in an uplink between two switches or between a switch and a router or between two routers. NOTE: From the host



Solved: Port aggregation not working?

Try cycling the port on the switch (or unplug and plug the cable back in). If that doesn't fix it then it is highly probably that LACP is not enable in Windows, and one of the other teaming options



Noob question: I setup port aggregation and it says

Noob question: I setup port aggregation and it says LACP disabled this port, but the Aggregate speed is 2Gbps. Is it disabled or not??



Port Aggregation: Boosting Throughput and Redundancy in Enterprise

Who Can Benefit from Port Aggregation?
Enterprise Users:Enterprises with high traffic demands or critical systems benefit the most from the increased throughput and redundancy

USW-Pro-Aggregation Trunk port not working : r/Ubiquiti

I have a Mikrotik router with 10G Fiber and a USW-Pro-Aggregation. I have created multiple /30 Vlans on the switch and set the router as their gateway. I trunk port 1 to allow all traffic so that the Vlans



Switching

It provides a step-by-step guide on configuring LAG, including checking port status, ensuring loop guard is inactive, and setting up the link aggregation through the switch's settings menu.



Hier sollte eine Beschreibung angezeigt werden, diese Seite lässt dies jedoch nicht zu.



Switch Port Configuration and Troubleshooting

Link aggregation means combining two or more separate cabled links into a single logical channel. For example, a single network adapter and cable



Back Button

Hier sollte eine Beschreibung angezeigt werden, diese Seite lässt dies jedoch nicht zu.



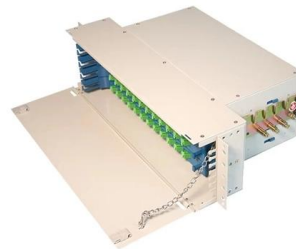


Cisco Switch Port Aggregation

How to configure an etherchannel link between 2 cisco 2960 switches. The etherchannel allows to combine several physical switch ports into one logical port.

Troubleshooting Link Aggregation LAG/LACP Not Working

Troubleshooting: When LACP (Link Aggregation Control Protocol) or static LAG (Link Aggregation Group) is not functioning properly, common troubleshooting steps and checkpoints

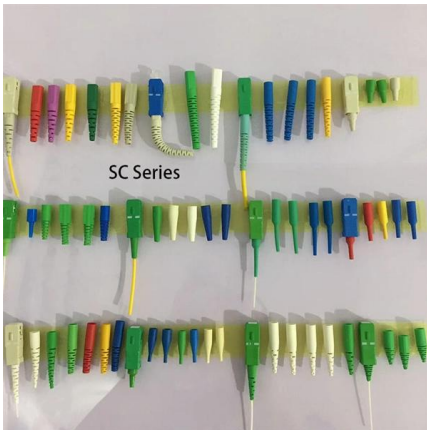


Set Up Ethernet Port Aggregation, **ADVANCED > Advanced Setup >**

If Ethernet port aggregation is supported, the router automatically trunks Ethernet ports 4 and 5. If not, Ethernet ports 4 and 5 work as independent Ethernet ports. We recommend that you select this

Solved: Port aggregation not working?

I have a Meraki MS350 switch and I want to connect a Windows server that is using the standard Windows network adapter teaming to the switch. I went into the switch, selected a couple



UniFi

This guide covers what port aggregation / link aggregation (LAG) is and how to enable and use it within UniFi. We'll also explore what benefits it provides and whether you should be

USW Aggregation 25G SFP28 not working : r/Ubiquiti

The customer wanted 25G ports between his buildings and went with the pro aggregation switches and some SFP28 modules (ESR (300m)). The modules are detected but the link is not coming up.



Port Aggregation FAQs

Port aggregation is not supported on most UniFi Gateways; it is only supported on the EFG, UXG Enterprise, UDM Pro, UDM SE and UDM Pro Max. Because of



UniFi

With UniFi switches, there is a requirement to use sequential ports. Below is an example of a LAG setup that would not work, due to the port numbers not being in sequential order. I have



Port-Channel aggregation issue

Hello. I am having an issue successfully creating a two cable port-channel on our core switch. I configured the interfaces on both ends created the port-channel and added the interfaces to

Unlock Speed with Ethernet Port Aggregation Guide

Ethernet Port Aggregation bonds multiple Ethernet ports into one logical link for more speed and redundancy using protocols like LACP.



Understanding Ethernet Port Aggregation: Benefits,

Ethernet port aggregation, also known as link aggregation, is a networking technique that combines multiple physical network ports into a single



How to Aggregate Ports on UniFi Switch

Aggregating ports on a UniFi switch combines multiple physical links into a single logical link, increasing bandwidth and providing redundancy. Follow these steps to create and assign



Contact Us

For datasheets, pricing, or custom telecom energy solutions, please visit:
<https://koskolong.co.za>