



Adam Tas Corridor Energy

Symptoms of beam splitter failure





Overview

Instead, degradation typically appears as output imbalance, elevated insertion loss, or gradual power drift across branches. These behaviors originate from structural stress, micro-bending at fiber attachment points, or environmental. Beam failures could be in flexure, torsion, and shear due to the exceed of the design loads in either failure mode. Depending on the type of load that could exert on the beam and when it reaches the relevant factored load, there is a change of structural failure. These failures can lead to serious consequences, making it essential to comprehend their nature and mechanisms.



Symptoms of beam splitter failure

Beam Splitter , Precision, Applications & Design Principles

Explore the precision, applications, and design principles of beam splitters, essential for advancements in scientific research and technology.



Fix Your Log splitter: Common Log splitter Problems & Solutions

Experiencing issues with your Log splitter? Discover expert tips and step-by-step guides to troubleshoot and fix common Log splitter problems like Small engine stops after a few seconds, Small engine runs



Troubleshooting a C splitter tower Part 2: root cause and solution

(which was not involved in the Investigation identified the tower design), and the tray high open slot area (15% of the supplier formed a taskforce to active area) of the fixed valves conduct a troubleshooting

Log splitter symptoms

You won't be splitting tree stumps when your log splitter's engine won't start, the hydraulic cylinder won't extend the wedge or the hydraulic



Evaluate Horizontal Cracks & Splits in Wood Beams or Logs

As solid wood beams and logs cure, shrinkage produces not only checking (large cracks that are normal and are not necessarily a problem) but also an actual reduction in log or beam diameter.



Understanding Problems in Concrete Beams: Different Ways They

Concrete beams, crucial components in building structures, can experience two main types of failures: flexural failure and shear failure. These failures can lead to serious consequences, making it



Beam Splitters - optical power splitter, beamsplitter, thin

What are Beam Splitters? A beam splitter (or beamsplitter, power splitter) is an optical device which can split an incident light beam (e.g. a laser beam) into two





Fiber Optic Splitter

Fiber Optic Splitter In today's optical network topologies, the advent of fiber optic splitter contributes to helping users maximize the performance of optical network circuits. Fiber optic splitter, also referred



How to Troubleshoot Common Issues with Polarization

Common Issues and Troubleshooting Insertion Loss Problem: High insertion loss indicates a significant portion of the input signal is lost within the

Log Splitter Troubleshooting

Log Splitter Troubleshooting In general, log splitters are powerful machines that use simplicity of design to perform a basic yet rugged



What Are the Main Beam Failure Modes?

Understanding the beam failure modes is essential in the field of engineering. From bending and shear failures to the implications of fatigue, a



Common Beam Failure Reasons and Solutions

Failure can be sudden (collapse) or gradual (cracking, deflection, corrosion). This makes it crucial to study both the reasons for beam failure and



Quora

Hier sollte eine Beschreibung angezeigt werden, diese Seite lässt dies jedoch nicht zu.

Beam splitter , Description, Example & Application

A beam splitter is an optical device that splits a single beam of light into two or more beams. It is commonly used in scientific and industrial applications.





Typical splitting failure for beam specimens without a

The premature de-bonding failure, of the carbon fiber reinforced polymer (CFRP) composites, is among the most important problems that hinder external

optics

My light source is beamed onto a 50/50 beam splitter behind which sits my camera but I cannot seem to eliminate ghosting from the surface of the



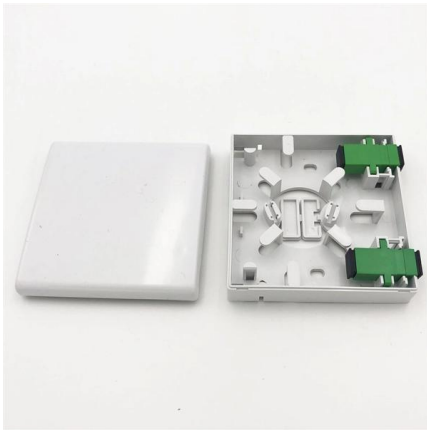
What kind of interference occurs in Beam splitter?

What kind of interference occurs in Beam splitter? Beam splitter (in Michelson Interferometer) divides radiations in two parts (half transmitted and half reflected). I want to know how this happens.

Common Splitter Failures: Optical and Structural Causes

Splitter failure rarely manifests as complete signal loss. Instead, degradation typically appears as output imbalance, elevated insertion loss, or gradual power drift across branches.



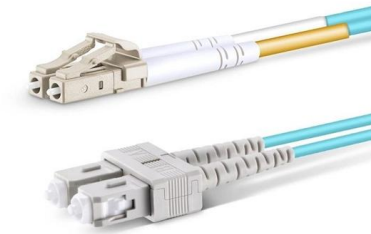


Types of Failures in Beams and Columns

Learn about common beam and column failures--shear, bending, buckling--and how to prevent structural issues in buildings.

Log splitter symptoms

You won't be splitting tree stumps when your log splitter's engine won't start, the hydraulic cylinder won't extend the wedge or the hydraulic pump leaks. Our symptoms and DIY

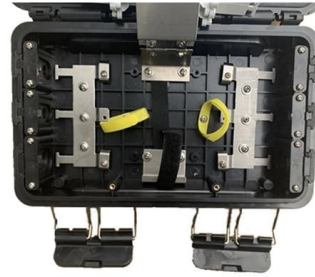


Common Log Splitter Problems And What To Do When They Appear

Common Log Splitter Problems And What To Do When They Appear Hydraulic log splitter systems use pressurised fluid to generate the force behind a wedge that splits wood. If your splitter feels weak or

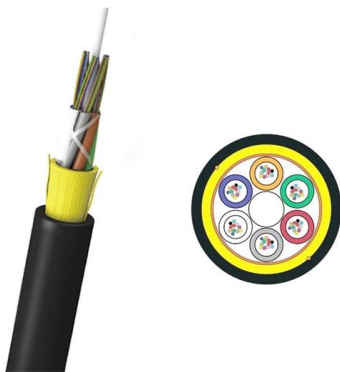
What Are the Causes and Solutions for Plc Splitter Loss in Optical

Preventative Measures for Minimizing Splitter Loss To mitigate splitter loss in optical fiber networks, network designers and operators should: · Use high-quality splitters with low insertion loss



Support Beam Splitting

Picture three is quite common where heartwood is included within the beam. It's a radial split that forms because of the tension developed as the timber



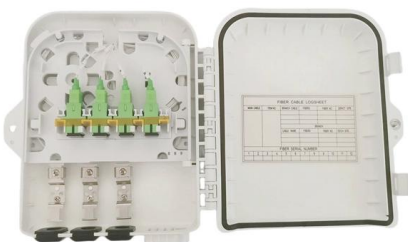
Log Splitter Troubleshooting: Fix Some Common Problems

We have prepared a guide that explains some of the most common problems in your log splitter and gets your busted machine running again.



6 Causes for Beam Failures

Beam Failures in Flexure
Shear Cracks Before Beam Failures
Torsional Cracks Before Beam Failures
Other Types of Beam Failures
Corrosion Cracks
Shrinkage Cracks
When the design shear stress is exceeded by the applied loads shear cracks can be observed as the initial warning with the increase of the loading. Immediate attention shall be made in such situations to avoid excessive loads and to





investigate the effect of the cracking on the structural elements. Figure 02 shows the cracks appear as shear c See more on structuralguide Construction Cost

Concrete Beam Failure , Types Of Beam Failure

When a beam or any flexure member deflects, a wedging action is formed owing to deformation of bars that results in generating lateral tension on concrete. This

Non-polarizing beam splitter issue : r/Optics

Possible problems with the BS: Stress birefringence. Scatter from the various surfaces (dust, roughness, coating imperfections). You're witnessing the depolarizing effects of striking the glass at skew angles



Optical Splitters in Modern Networks

Unraveling the Power of Optical Splitters in Modern Networks In today's optical network topologies, the advent of fiber optic splitters contributes to

Can a Cable Tv Splitter Go Bad

You might be surprised to learn how quickly a cable TV splitter can fail--discover the signs and solutions to ensure uninterrupted viewing.



Contact Us

For datasheets, pricing, or custom telecom energy solutions, please visit:
<https://koskolong.co.za>