



Adam Tas Corridor Energy

Tajikistan Sanhao Street Core Switch





Tajikistan Sanhao Street Core Switch



UnionPay International will participate in the construction of bankcard

After taking part in the construction of bankcard switch network in Laos and Thailand, UnionPay will participate in building a payment network in Tajikistan too. The other day, President of China

Understanding the Core Switch: Key Differences and Uses

Explore the core switch's role as the backbone of your network. Discover key differences, uses, and insights into layer 3 core switch technology.



SME Network Solution Typical Configuration Examples

"Gateway (AR720) + Core Switch + Access Switch + AP + AR180" Networking: Huawei eKit Cloud Management "Gateway + Core Switch + Access Switch + WAC + AP" Networking: Local Entire

Sanhao Street

Sanhao Street [Photo/IC] Built in 1988, Sanhao Street is also called "China's Computer Town". In 2005, it was selected as one of the 10 China



Featured Commercial Streets. People can



EX9200 Ethernet Switch

EX9200 core switches deliver a number of high availability features that ensure uninterrupted, carrier-class performance. Each EX9200 chassis includes an extra slot to accommodate a redundant



Core Switch

Core Switch For Inquiries About Our Products Or Pricelist, Please Leave Your Email To Us And We Will Be In Touch Within 24 Hours.



Sanhao Street

Built in 1988, Sanhao Street is also called "China's Computer Town". In 2005, it was selected as one of the 10 China Featured Commercial Streets. People can buy any kind of computer equipment there.





San Hao Street Computer and Software City

Note: San hao street is NOT a good place to shop for cellular phones! Also, all shops close daily at 5:30pm, so don't plan on shopping late. How to Get There: Computer City is south of the inner ring



Tajikistan Electrical Switches Market (2022-2028) , Trends, Outlook

Tajikistan Electrical Switches Market Synopsis
The electrical switches market in Tajikistan is expected to witness a healthy growth over the forecast period, owing to increasing investments from both public

Core Switches: The Pillar of Network Infrastructure

Get a closer look at core switches: the nerve centers of network infrastructure that enhance performance and facilitate growth.



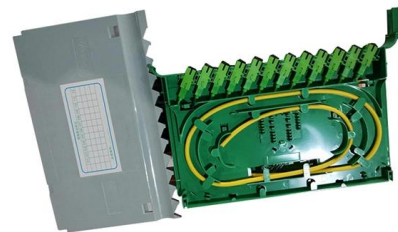
Electronic stores in Shenyang, Liaoning

3. Buynow Sanhao St, Sanhao Street Shangquan, Heping District, Shenyang, Shenyang, Liaoning, China 3.5 · +86 24 6222 0658 Department stores, Electronic stores



What is a Core Switch , Functions and Difference over Normal Switch

What is a core switch and how it works? This article builds the basics of this kind of switch for the ones who don't know anything about it. What is a Core Switch? It is a powerful



What is a Core Switch?

Spread the loveA core switch is a crucial component of a network infrastructure that serves as the backbone of a network. It's a high-performance switch that provides

Surface Switch - Core

Surface Switch Series Modular & Refined Identity
KNX Modular Switch Series With built-in KNX
technology and compatibility with Italian
installation standard,



Cisco Catalyst 9600 Series Switches

Catalyst 9600 Series switches offer a more secure experience and bring exceptional automation, analytics, speed, and scale to your access network.



TJ1600 Core Switch

TJ1600 Core Switch Hyperscale Disaggregated Optical Transport & Switching TJ1600 Core Switch is one of the world's largest disaggregated multi-terabit optical switches designed for building high



Cisco Dealer In Tajikistan , HPE Aruba Switch , Juniper Networks

Cisco Network Switch is simple to deploy and manage and reduce IT management time. Built for new-generation needs and ensure energy efficiency and eco-friendliness.



News

Core switches function as the backbone of a network, facilitating data transfer between different sub-networks. This article outlines six foundational concepts



Core-Switches

Core-Switches kaufen & konfigurieren.
Hochwertige Markenware & erstklassige
persönliche Beratung. Bei uns im Servershop.



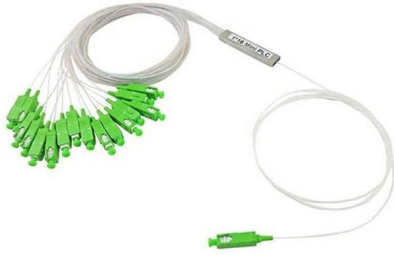
Core Switch Explained: Key Functions and Benefits

Discover what a Core Switch is, its pivotal role in network architecture, and how it boosts performance and reliability in your data infrastructure.



What Is a Core Switch in a Network?

Define the core switch--the central, high-speed backbone required for aggregating and routing massive volumes of enterprise network traffic.



UnionPay, Tajikistan's central bank partner to set up bankcard switch

UnionPay International, a wholly-owned subsidiary of China UnionPay, has partnered with National Bank of Tajikistan to establish local bankcard switch network in Tajikistan. Meanwhile,



[strongpass/js/bower_components/zxcvbn/dist/zxcvbn.js.map](#)

An offline, deterministic, cryptographically strong, password generator. - grempe/strongpass

Smart & Auto Street Light Control On-Off Switch

With over 20 years of expertise in smart street light control on off switch manufacturing, LongJoin Intelligence specializes in street lighting photocells,





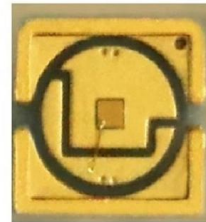
Tajikistan Data Center Switch Market (2025-2031) , Share & Revenue

The Tajikistan Data Center Switch Market is poised for steady growth in the coming years, driven by the increasing demand for data storage and processing capabilities in the region.



List of Switch Companies in Tajikistan

List of Switch Companies in Tajikistan, Suppliers, Distributors, Manufacturers, Importer. Include Unique Tech LLC, .



What is Core Switch and How to Choose?

In this article, we will provide an overview of the core switch, its significance, and offer guidance on how to choose the right core switch for your



Transmission

Transmission Dahua offers both network and HDCVI PTZ cameras. PTZ cameras use pan, tilt, and zoom functionality to provide both wide-area coverage and great detail. Dahua offers both network





Company Overview

Dongguan Shan Hao Technology Co., Ltd.
Products: Relay Module, PCB Tray
Brackets, Relays, RS485 Modules, Solid State
Relays

What Is a Core Switch?

Explore what a core switch does, why it's essential for enterprise networks, and how to choose the right model. Includes real-world applications and Cisco/Huawei/Aruba model comparison.



Features and Applications of Core Switches

A Core Switch is a critical device that operates in the backbone portion of a network, primarily used for high-speed data switching. It is part of the commonly used Network Switch

Learning About Glaciers: Scientists Extract Ice Cores in

Learning About Glaciers: Scientists Extract Ice Cores in Tajikistan A group of international scientists is on a complex, arduous expedition to learn



Core Switch vs. Distribution Switch vs. Access Switch

Comprehensive guide to Core, Distribution, and Access Switches. Roles in the network and important parameters explained.



Contact Us

For datasheets, pricing, or custom telecom energy solutions, please visit:
<https://koskolong.co.za>