



**Adam Tas Corridor Energy**

# **Technical Specifications of 200G Active Optical Equipment for Metropolitan Area Networks**





## Technical Specifications of 200G Active Optical Equipment for Metro

---

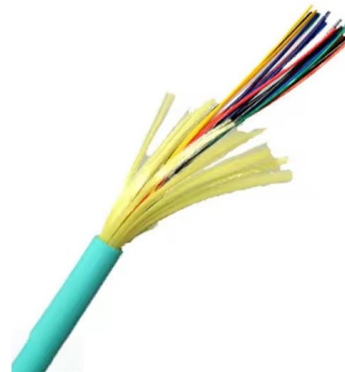


### Technical feasibility of 200G/lane optical

Technical feasibility of 200G/lane optical Maxim Kuschnerov, Lin Youxi Huawei Technologies 03.05.2021 IEEE P802.3 B400G Study Group, Interim Teleconference, 3 May 2021

### PL-2000M 200G Muxponder/Transponder

The PL-2000M is an advanced 200G multi-protocol multi-rate solution for building high capacity optical transport networks. This 1U platform with flexible architecture enables the same device to be used in



### 200G QSFP56 Active Optical Cable (AOC) , 200Gbps, 100m Reach,

The 200G QSFP56 Active Optical Cable is fully compliant with QSFP56 MSA standards and supports plug-and-play deployment without additional configuration. It is widely used in hyper-scale data



### PL-2000M

The PL-2000M product provides high transport capacity of 200G over a single wavelength in a modular and cost-effective way for rolling out



services or uplifting existing network capacity.



### PL-2000M Data Center Interconnect and Metro Applications

NSPONDER Data Center Interconnect and Metro Applications The PL-2000M is an advanced 200G multi-protocol multi-rate solution for building high capacity optical transport networks. This 1U



### 200G QSFP-DD Active Optical Cable Datasheet , FS

Features 8-Channel Full-Duplex Active Optical Cable with QSFP-DD Plugs



### IEEE802

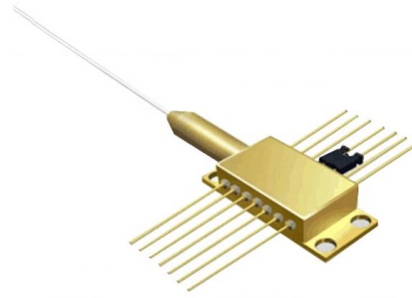
The IEEE 802 LAN/MAN Standards Committee (LMSC) develops and maintains networking standards and recommended practices for local, metropolitan, and other area networks,





## 802.1Q-2022

802.1Q-2022 - IEEE Standard for Local and Metropolitan Area Networks--Bridges and Bridged Networks Abstract: This standard specifies how the Media Access Control (MAC) Service is

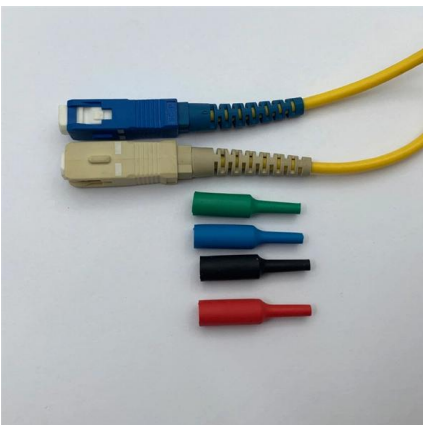


### 200G per Lane for beyond 400GbE

Scalability to 1.6T Ethernet 200G optical lane technical feasibilities Baseline performance for different modulation format choices Key component requirements 200G per lane (optical) components

### 200G Optical Networks: What you need to know

By: Earl Kennedy, IP Transport Product Marketing, Alcatel-Lucent Optical network operators have already made the move to 100G. But



### 200G/lane optical solutions

The adoption of 200G/lane optical links in data centers lays the groundwork for the eventual deployment of 1.6T and 3.2T optical module solutions with 200G/lane



## IEEE Std 802.11 -2020, IEEE Standard for Information Technology

Introduction This introduction is not part of IEEE Std 802.11-2020, IEEE Standard for Information Technology-- Telecommunications and Information Exchange between Systems--Local and



## PL-2000M

PL-2000M is the PacketLight's 200G multi-protocol multi-rate solution for building high capacity optical transport networks. Its flexible architecture enables the same device to be used in multiple

## Technical feasibility of 200G/lane optical

Introduction Goal: comparison of 200G/lane PAM4 vs. PAM6 optical on demonstrator hardware and in simulations



## (PDF) Evolution to 200G Passive Optical Network

Thanks to recent progress enabling a variety of optical transceivers up to 40 Gb/s, many evolution possibilities to 200G PONs (passive optical network)



**PL-2000M 200G  
Muxponder/Transponder**

Data Center Interconnect and Metro Applications  
The PL-2000M is an advanced 200G multi-protocol multi-rate solution for building high capacity optical transport networks. This 1U platform with flexible



**200G Optics , HPE Juniper  
Networking US**

Use Juniper's portfolio of 2 x 100G optical transceivers to service point-to-point 200G interconnections or breakout to interoperate with widely deployed legacy four



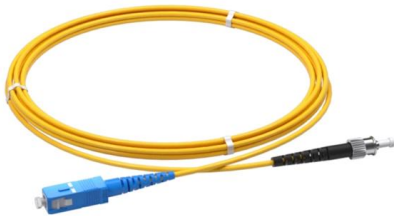
**Arista 200G Transceivers and  
Cables**

Because Arista's 200G QSFP optics are dual-rate, and capable of breakouts, each 200G optic or cable can support several different operating modes. The tables below summarize the



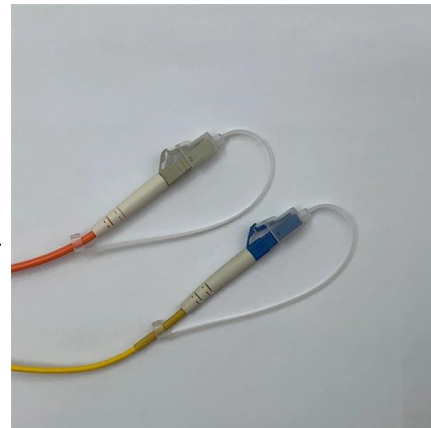
### **200G QSFP DD Active Optical Cable (AOC)**

Amphenol QSFP DD to QSFP DD 200G Active Optical Cable assemblies increase the number of lanes from 4 to 8 and double the port density



### **The road towards 100G and 200G-Passive Optical Networks**

Status, paths and challenges towards realization and standardization of 100G or 200G-PONs are described, and technology options, be it intensity-modulation and direct-detection or a



### **802-2014**

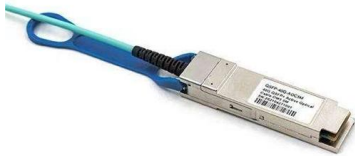
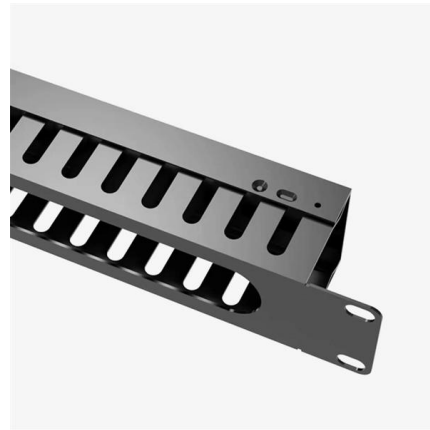
Scope: This standard contains descriptions of the IEEE 802® standards published by the IEEE for frame-based data networks as well as a reference model (RM) for protocol standards. The





## Handbook Optical fibres, cables and systems

Moreover, the optical plant needs a lot of complementary hardware (passive nodes, optical distribution frames, joint closure, cabinets, etc.), which needs a detailed development and specification both for



## IEEE SA

Technical corrections and clarifications to IEEE Std 802.11 for wireless local area networks (WLANs) as well as enhancements to the existing

## 200G Modules

GIGALIGHT provides 100G, 200G, and 400G pluggable digital coherent optical transceiver modules (DCO) for data center interconnection (DCI), 5G backhaul, metro telecommunication, and other long



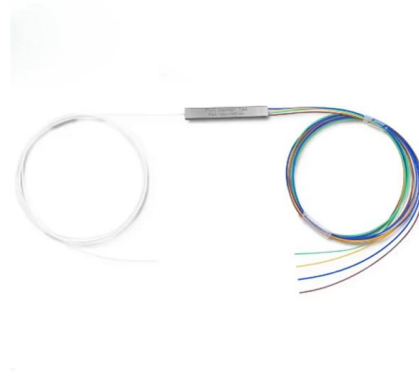
## The 200G/lane CPO pushes optical interconnect

Now, after the launch of the third-generation 200G/lane CPO, Broadcom has telegraphed its commitment to developing a fourth-generation



## The road towards 100G and 200G-Passive Optical Networks

Status, paths and challenges towards realization and standardization of 100G or 200G-PONs are described, and technology options, be it intensity-modulation and direct-detection or a coherent



## 3m (10ft) Arista Networks A-Q200-Q200-3M Compatible 200G

The 200G QSFP56 active optical cable is designed for use in 200 Gigabit Ethernet links over OM3 multimode fiber, it contains four multimode fibers (MMF) optic transceivers per end, each operating



## Contact Us

For datasheets, pricing, or custom telecom energy solutions, please visit:  
<https://koskolong.co.za>