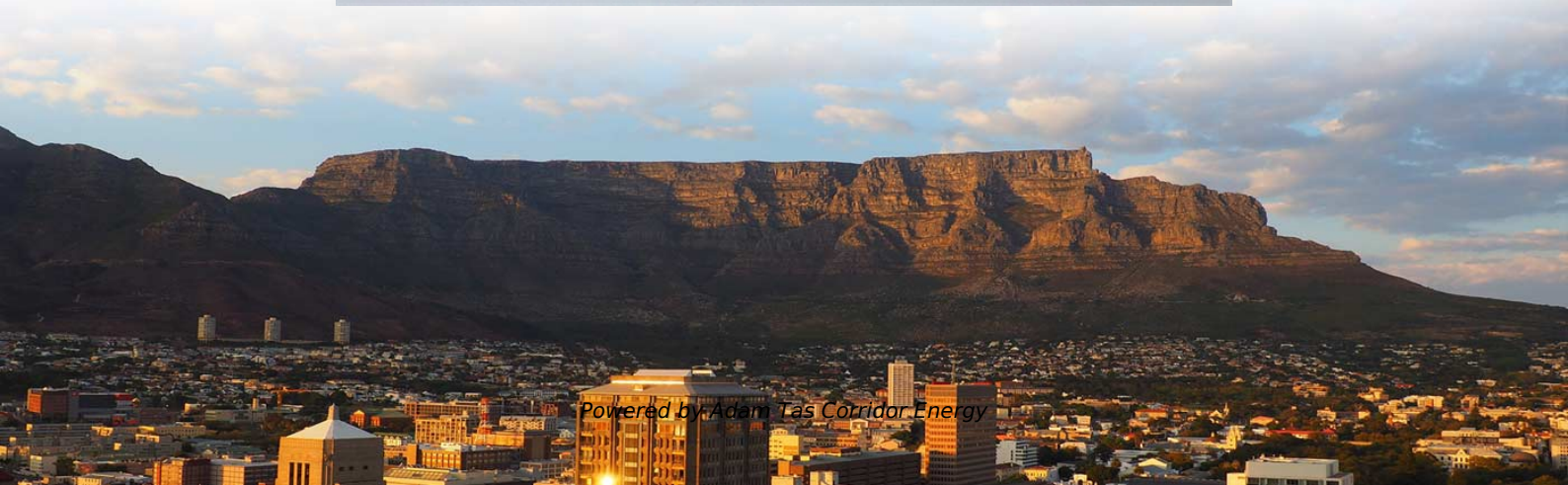




Adam Tas Corridor Energy

Technical parameters of 24-core butterfly-shaped drop cable in stock





Technical parameters of 24-core butterfly-shaped drop cable in stock

1/2/4F Armored Butterfly Drop Cable for Duct



The cable features an armored construction where the Butterfly drop cable is positioned in the center, two parallel additional strength members are placed at the two sides, and it is wrapped with a layer of

2-8F Butterfly Flat Indoor FTTH Drop Cable assemblies.pub

The optical fibers are positioned in the center of cable and two parallel Fiber Reinforce Plastic (FRP) strength members are placed at the two sides. Then, the cable is completed with LSZH



Duplex Service Drop Cable

APPLICATIONS Duplex service drop cable is intended to deliver single phase power from the secondary power line or pole mounted transformer to the service entrance conductors at the user's building or



Butterfly Flat FTTH Drop Cable , FS

GJXFH FTTH Indoor Drop Cable uses butterfly flat structure, whose optical fiber unit is positioned in the centre. Two parallel Fiber Reinforce Plastic



(FRP) strength members are placed at the two sides.



The Structure of Drop Cable: A Comprehensive Guide , FIBEYE

This type of cable gets its name from its butterfly-like cross-sectional shape. The structure of the butterfly drop cable can vary among different manufacturers, but it typically consists of non-metallic

Butterfly Flat FTTH Drop Cable , FS

1 FTTH Outdoor Aerial Cable
2 FTTH Duct Cable
3 FTTH Fiber Cable
4 FTTH Indoor Cable
5 Butterfly Flat FTTH Drop Cable - GJXFH
Features and Benefits
Application
KFRP Strength Member, LSZH Butterfly Flat Indoor FTTH Drop Cable
GJXFH
GJXFH FTTH Indoor Drop Cable uses butterfly flat structure, whose optical fiber unit is positioned in the centre. Two parallel Fiber Reinforce Plastic (FRP) strength members are placed at the two sides. Then, the cable is completed with LSZH sheath. FTTH indoor cable has a much greater bandwidth to carry data and less susceptible to interference. See more on img-en.fs.briticom



FTTH - Round Drop Armoured Butterfly-Shaped Cable

This cable is available to buy in many different colours, thicknesses and constructions including armoured. It is ideal for applications such as



4F Butterfly Flat Indoor FTTH Drop Cable

Butterfly flat drop cable uses special low-bend-sensitivity fiber to provide high bandwidth and excellent communication transmission, it's very suitable for indoor

00_FTTH-FTTB.cdr

FTTH cables are used in the last portion of an all-optical network, such as fiber-to-the-home (FTTH) or fiber-to-the-business (FTTB) networks. Acts as a bridge between the distribution network and the



FTTH Fiber Cable 2 Core Bow Type with Steel Wire

This 2 core cable with 2 steel wire as strength member, provides excellent performance of crush and tensile strength. The cable is used as access cable, fttth



Butterfly Drop Cable

It can be used for laying in indoor environments such as vertical shafts, concealed pipes, cable trays, walls, flower boards, etc. It can be matched with connectors for



Butterfly Flat FTTH Drop Cable Figure 8 drop cable Price in china

This Drop Cable GJXFH FTTH Indoor Drop Cable uses butterfly flat structure, whose optical fiber unit is positioned in the centre. Two parallel Fiber Reinforce Plastic (FRP) strength members are placed at



1-24 core FTTP FTTx Flat Drop Flexible Fiber Optic

We are a manufacturer of FTTx Flat Drop Flexible Fiber Optic Cable for the Last Link direct buried, conduit Underground or self-supporting aerial . We supply fiber



1-12C Butterfly Flat Indoor FTTH Drop Cable patch cor& Pigtail.pub

Description It's a kind of patch cord/Pigtail but assembly with Butterfly Flat Indoor FTTH Drop Cable. With easy accessibility to the fiber and simple installation, FTTH cable can be directly



Butterfly Indoor FTTH Drop Cable

The optical cable has the characteristics of small diameter, light weight, low cost, good softness and bending property. Light weight and easy to lay, construction



Butterfly Drop Cable , FTTH Terminal Cable , Fasten

Fasten butterfly drop cable is conform to the EU ROSH standard, and the flame retardant grade accords with IEC60332.

Focus creates quality products



1/2/4F Self-supporting Butterfly Drop Cable

Abalone Tech's 1/2/4F Self-supporting Butterfly Drop Cable is designed for aerial and duct installations in FTTH (Fiber-to-the-Home) and telecom networks. The cable features a central optical fiber unit,



1/2/4F Self-supporting Butterfly Drop Cable Black

Self-supporting Butterfly Drop Cable with central fiber core and dual strength members. Ideal for FTTH, aerial/duct installations, and harsh environments.



Microsoft Word

4. Optical Fiber Color Code Each fiber will be identifiable throughout the length of the cable in accordance with the following color sequence. Fiber color starts from No. 1 Blue.

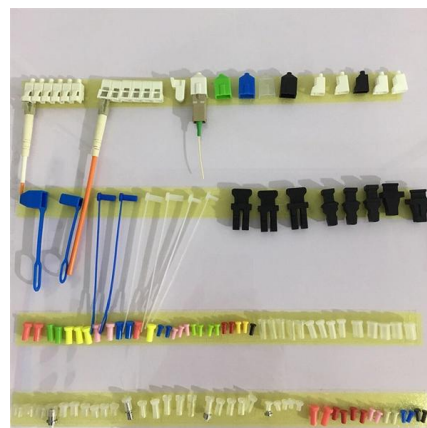


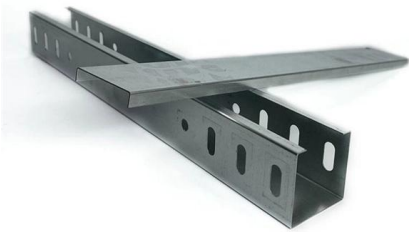
Butterfly Drop Cable

Butterfly Drop Cable It is mainly used as a fiber to the home (FTTH) and other fiber optic access (FTTx) network user introduction segment cabling cable for

TECHNICAL DATA cable

FTTx dual drop cable with 2 to 24 fibres micro duct and aerial drop installations HDPE H PE sheath sheath



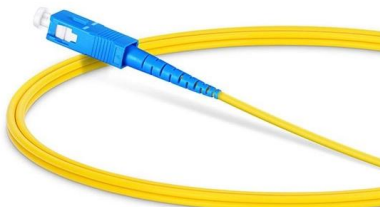


Butterfly Drop Cable

1/2/4F Butterfly Drop Cable Black or White
2.0x3.0mm Butterfly Drop Cable featuring central fiber core with dual side strength members and LSZH sheath. Perfect for FTTH drop wiring and indoor/outdoor

024ZBA-14101A20 , SST-Drop(TM) Single-Tube, Self-Supporting, Gel

There is no support or messenger wire required, allowing installation to be achieved in a single pass, dramatically reducing installation time and cost while delivering high-speed internet to rural areas.



2-8F Butterfly Flat Indoor FTTH Drop Cable assemblies.pub

Product introduction FTTH Indoor Drop Cable uses butterfly flat structure, whose optical fiber unit is positioned in the center. Two parallel Fiber Reinforced Plastic (FRP) or Steel wire

1/2/4F Armored Butterfly Drop Cable for Duct 6.8mm

The cable features an armored construction where the Butterfly drop cable is positioned in the center, two parallel additional strength members are placed at



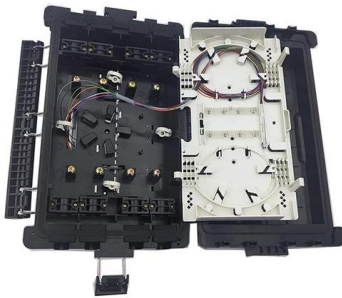
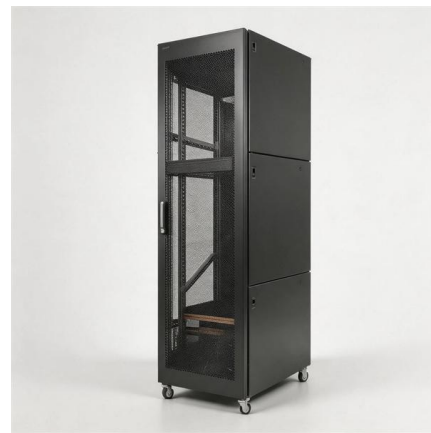


12 or 24f FlexDrop Cable

The FlexDrop design contains up to two 12 fiber FlexRibbons in a central core design with an overall compact diameter. The round design (RRD) is for blown applications into microduct only. The flat

Drop Cable: The Essential Link in Network Connectivity

Explore the meaning and significance of drop cable in networking - from basic definitions to installation techniques and use cases.



2_4 core Indoor FTTH_STL_01

Flat Drop Fibre Optic Cable Product details D-Link Flat Drop Cable is an enhanced performance FTTH solution, constructed with one/two/four single mode / bend sensitive bres, protected by two strength

Product Spec Sheet 024ZB4-14101A20

Both versions are RDUP (RUS) Listed and deliver exceptional crush resistance, making them ideal for rugged environments and underground installations. SST-Drop™ Single-Tube,



TECHNICAL BROCHURE

The bending fatigue resistance of steel wire ropes is defined as the number of bending cycles a rope can achieve in a bending fatigue test under defined parameters (e.g. running over sheaves with a defined

Contact Us

For datasheets, pricing, or custom telecom energy solutions, please visit:
<https://koskolong.co.za>