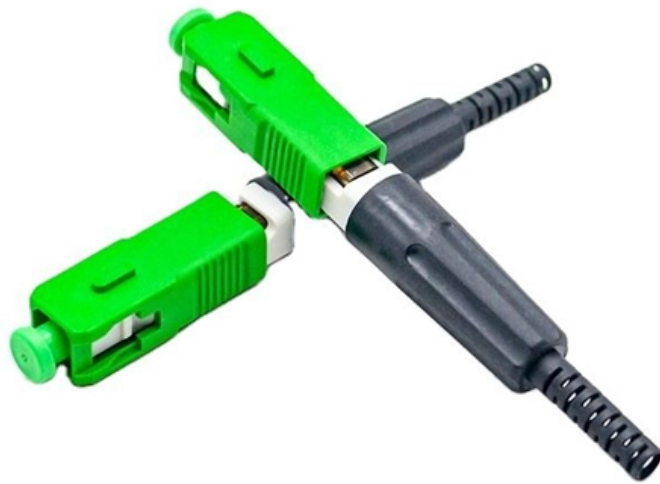




Adam Tas Corridor Energy

Temporary worker wiring electrical boxes in Ireland





Temporary worker wiring electrical boxes in Ireland

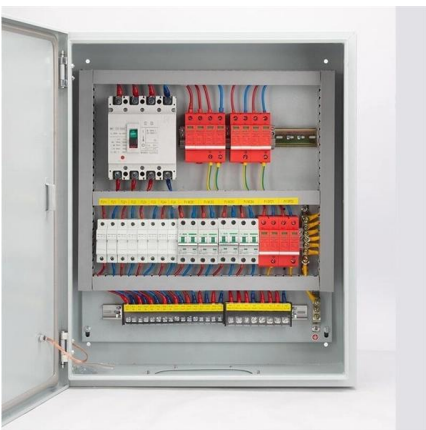


NSAI publishes new National Rules for Electrical

2nd March 2020 Ireland's new National Rules for Electrical Installations (Wiring Rules) have been published by the National Standards Authority of Ireland

Restricted & Controlled Electrical Works - Safe Electric

Restricted Electrical Works encompass most electrical works in a domestic premise. From 01 October 2013, anyone wishing to carry out Restricted Electrical Works



Electricity

Electricity Overview There are considerable risks and dangers from electricity, including burning, explosion, electrocution, shocks, fires and those arising from the mechanical movement of

Temporary Electrical Installations on Construction Sites

Safety and reliability: the cornerstones of temporary electricity systems Construction sites



can be hazardous environments, and proper electrical installation is vital to prevent accidents.



Safe Standards for Temporary Wiring_0912

Safe Standards for Temporary Wiring Whether it's a renovation or new construction, temporary wiring is regularly used to provide power around a job site before the permanent electrical system is in place.

Toolbox Talk: Temporary Wiring

Benefits: Ensures temporary wiring will be adequate for the installation and protects workers from the hazards associated with electricity on job and construction sites

MTP MPO SC-Type Fiber Adapter



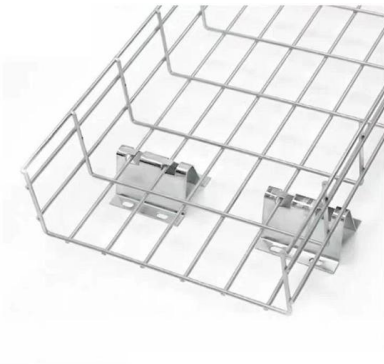
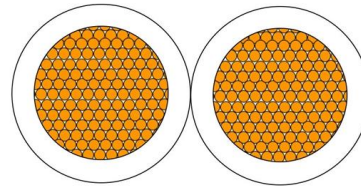
Electrical safety in the construction industry

Electrical safety in the construction industry Electrical hazards on construction sites can put workers at risk of injury or death. Learn how to control electrical risks on construction sites, fulfil



IS 10101 National Rules for Electrical Installation

The National Rules for Electrical Installations are essential for electricians, inspectors and regulators as they specify the safety requirements for electrical installations in all types of premises in Ireland.



Temporary Electrical Connections Safety in Hazardous

Temporary electrical connections are required in industries to perform certain work in an operational area classified as a hazardous zone, special safety precaution

515.qxd

Construction work requires electrical power for many purposes. However, exposure to weather, frequent relocation, rough use and other conditions not normally encountered with conventional wiring



New I.S.10101 Electrical Regulations in Ireland: Explained

The new I.S.10101 standards, which introduce significant changes to electrical regulations, are being phased in with a two-year transition period (Safe Electric).



Temporary Electrical Installations

Design and installation of Temporary Site Lighting and Emergency Lighting installations as per clients' requirements, identifying primary routes and high-risk



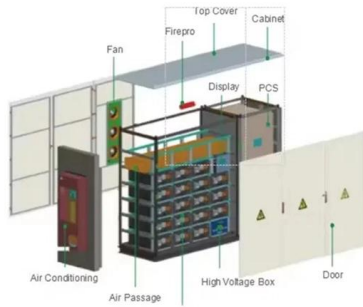
Electrical Works in your Home

Electrical Works in your Home You should always use a Registered Electrical Contractor (REC) to carry out electrical work in your home. It is the law. Safe Electric The Safe Electric scheme covers all

Understanding Electrical Regulations in Ireland: A Guide

The Wiring Regulations in Ireland, also known as the National Rules for Electrical Installations (ET101), provide detailed guidelines for safe electrical





Essential Guidelines for Safe Temporary Electrical

Temporary electrical installations for construction sites are crucial for powering tools and equipment, but they also pose significant risks if not managed properly. With

Guide to I.S. 10101: 2020 National Rules for Electrical Installations

This digital training module has been developed by the Electrical Contractors' Association, in conjunction with METAC Training and the CIF, based on the needs of electrical contractors.

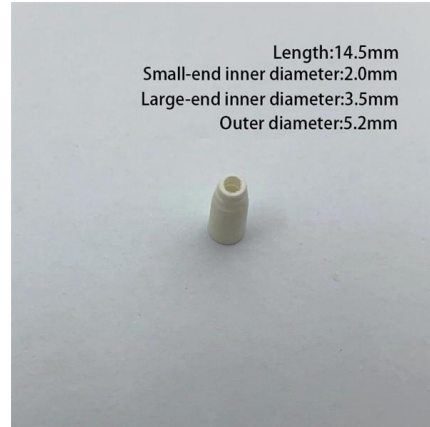


New I.S.10101 Electrical Regulations in Ireland: Explained

Safe Electric I.S. 10101:2020 - Changes in National Wiring Rules for Electrical Installations - E1 Safe Electric Scheme Watch on Credit: Safe Electric Webinars For more information or advice on the new

Ireland New Wiring Rules

Ireland's new National Rules for Electrical Installations (previously referred to as the National Wiring Rules) have been published by the NSAI. The document is the



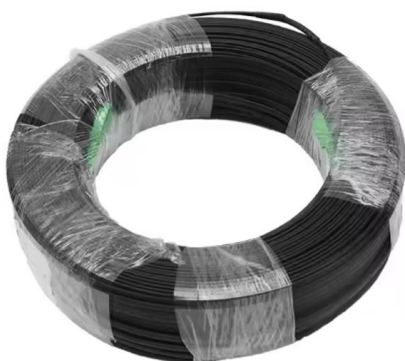
IS:10101 Bitesize Guide from Hager

This device is specifically to detect and disconnect dangerous electrical arcs in both the fixed wiring and the connected equipment which could be the source of a fire. An electrical arc could



Electrical Safety Test Ireland , Pat.ie

Electrical Safety Tests - Legal Requirements
Electrical safety testing is required by law in Ireland under the Safety, Health and Welfare at Work Act



Electrician Guide: Understanding Electrical Codes and

Finding the right professional for electrical work is crucial to ensuring safety and compliance with electrical codes in Ireland. This section covers the



I.S.10101 Wiring Regulations

In February 2021, the new standard for the national rules regarding electrical installations came into force to replace the old Wiring Regulations. The main changes impacted common areas



Temporary Wiring: OSHA Rules for the Construction

So it doesn't apply to construction work. In fact, the OSHA standard dedicated to temporary wiring in the construction industry doesn't specify a time

New Wiring Rules IS10101

After 24 months (from 1 April 2022), all electrical installations must be certified to the new standard. Installations may be designed to the old standard until 30



Contact Us

For datasheets, pricing, or custom telecom energy solutions, please visit:
<https://koskolong.co.za>