



**Adam Tas Corridor Energy**

# **The bit error rate and the bit error rate are the same**





## The bit error rate and the bit error rate are the same

---

### What Is a Bit Error Rate (BER) and How Is It Calculated?



The Bit Error Rate (BER) is the expression of the frequency of these errors, calculated as a ratio or probability. It provides a normalized way to compare the performance of vastly different

### Bit Error Rate , What Is A Good BER

In digital transmission, the number of bit errors is the number of received bits of a data stream over a communication channel that have been altered due to noise, interference, distortion,



### L7\_BER

The bit error rate (BER), or perhaps more appropriately the bit error ratio, is the number of bits received in error divided by the total number of bits transferred.



### Bit Error Rate

The bit error rate is a measure of how many bits are received in error compared to those transmitted. Ideally if you send a stream of



binary 'ones' and 'zeroes' down a link they will all arrive in



### BER - Is it Bit Error Rate or Bit Error Ratio? , Keysight

As an example, if our specified BER is 10<sup>-12</sup>, and we require a typical confidence level of .95 (95%), the required number of bits to test without any

### Understanding Bit Error Rate (BER) in Communication Circuits

These algorithms are critical in detecting and correcting errors, which results in significant BER reduction, particularly in high-data-rate scenarios. In parallel, new modulation



8-Port PLC Fiber Splitter Box  
12-Port SC Fiber Splitter Box

Size: 235\*215\*75mm  
Material: ABS, IP65,



### Bit Error Rate (BER) 101: Measuring Signal Quality in Digital Links

A lower BER indicates better signal quality, as it means fewer errors have occurred. For example, if 1,000,000 bits are transmitted and 100 bits are incorrect, the BER would be



## Bit error rate

In digital transmission, the number of bit errors is the number of received bits of a data stream over a communication channel that have been altered due to noise, interference, distortion or bit



## The Bit Error Rate

In a perfect channel, every received bit value (0 or 1) is equal to the transmitted value. In the typical channel, some bit errors occur. The BER is the ratio of bits

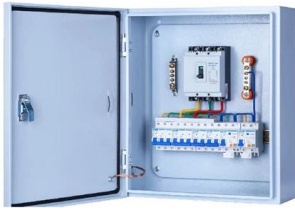
## Bit Error Rate Analysis Techniques

If your communications system uses several bits to represent one symbol, counting symbol errors is different from counting bit errors. In either the symbol- or bit



## Computing Error Rates

For the same symbol rate (which means same bandwidth), 8-PAM transmits 3 bits of information as compared to just 1 bit of information by 2-PAM



## Bit Error Rate Vs Bit Error Probability , Flyriver

The bit error rate, also known as the bit error probability, refers to the likelihood that a single bit of data will be corrupted or lost during transmission. In other words, it is the probability that a specific bit will



## Modelling the Bit Error Rate (BER)

The Bit Error Rate (BER) is the number of acceptable errors you are prepared to tolerate. This is typically a number between 0.1 (every 10th bit is

## What is Bit Error Rate: BER tutorial

What is Bit Error Rate: BER tutorial Bit Error Rate, BER is a key parameter for measuring the performance of a data wired or wireless data channel.





## Understanding Bit Error Rate (BER) Fundamentals

Causes of Bit Errors Bit errors occur when the received signal is corrupted or distorted, causing the receiver to incorrectly interpret the transmitted data. The main causes of bit errors can

## Bit Error Rate: Fundamental Concepts and Measurement Issues

A lower bit rate increases the energy per bit, but we lose capacity. Ultimately, optimizing  $E_b/N_0$  is a balancing act among these factors. BER Measurement While the basic concept of BER measurement



## What Is the Bit Error Rate (BER) Formula?

Discover how the Bit Error Rate (BER) formula measures communication quality and defines the integrity of all digital data systems.

## Bit Error Rate (BER) Test and Measurement Using BER Meter

Learn about bit error rate (BER) testing, BER meter setup, XOR method, and FPGA method for evaluating digital communication systems.



## BER - Is it Bit Error Rate or Bit Error Ratio? , Keysight

And there we have our answer - the correct term is Bit Error Ratio. However, BER is commonly referred to as Bit Error Rate, referring to the number



## What Is Bit Error Rate? A Practical Guide

Discover how bit error rate helps evaluate digital link health, understand measurement methods, and learn strategies to reduce errors for optimal network performance.



## What Is BER (Bit Error Rate)? Measuring Signal Integrity

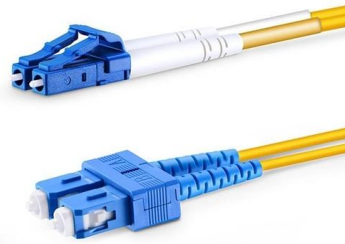
Understanding Bit Error Rate (BER) In the realm of digital communications, ensuring the reliability and integrity of data transmission is paramount.





## Understanding Bit Error Rate in Communication

Learn about Bit Error Rate (BER), its importance, and how it's used to measure the performance of digital communication systems.



## NICE AND EASY: What is bit error rate?

Digital broadcasts use both these methods and several other ones to deal with the errors that come with broadcasting. That's part of the reason that

## A second look at jitter: Calculating bit error rates

A previous article on jitter (Synch and clock recovery - an analog guru looks at jitter) defined jitter and its various sub-components. The purpose of this



## How Is Bit Error Rate (BER) Used to Measure Signal Quality?

Understanding Bit Error Rate (BER) Bit Error Rate (BER) is a crucial parameter in the telecommunications industry, serving as a fundamental measure of signal quality.



## AN1047 Understanding bit-error-rate Hotlink

Bit-error-rate is the relationship of the number of bits received incorrectly, compared to the total number of bits transmitted. This relationship is shown in Equation 1.



## What is Bit Error Rate or BER?

Bit Error Rate (BER) is the number of bit errors per unit of time where bit errors refer to the number of received bits of a data stream that have been altered due to noise, interference,

## Bit Error Rate Explained: How to Measure and Improve Digital Signal

Because raw error-counts don't tell the whole story: a high-speed link sending billions of bits will naturally see more raw errors than a slower link--but the BER lets you compare apples to





## What is Bit Error Rate? Understanding Digital Signal

Key Distinction: BER vs. Number of Errors It's vital to understand that BER is a rate, not an absolute count. A system transmitting at 1 Gbps (Gigabit

## What Is Bit Error Rate? And What Is a Good Bit Error Rate?

As a key parameter for evaluating data transmission accuracy, the bit error rate directly determines the reliability and stability of communication systems. This article delves into the



## Contact Us

---

For datasheets, pricing, or custom telecom energy solutions, please visit:  
<https://koskolong.co.za>