



Adam Tas Corridor Energy

The electrical distribution box is broken





Overview

Check the electrical load and ensure that the sensors do not exceed the 10 Amp maximum. In modern power systems, distribution boxes are the core equipment for power distribution and control, and their stable operation is crucial to ensuring the safety and reliability of power supply. From diagnosing common issues like loose wiring or damaged components to providing a step-by-step guide on the repair process, this tutorial is perfect for beginners and DIY enthusiasts. Do not touch live parts, turn off the corresponding power switch to avoid the risk of electric shock.



The electrical distribution box is broken

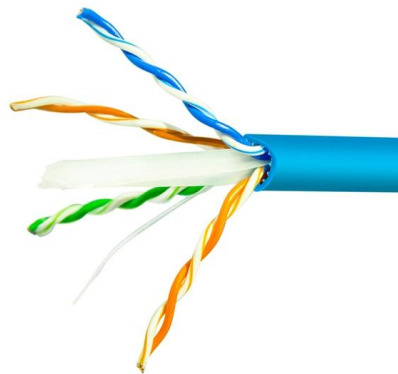


What are the common problems of distribution boxes?

The main problems encountered with distribution boxes include installation and layout problems, electrical connection and grounding problems,

Electrical Panels: Replacement Signs, Maintenance,

The electrical panel--also called a circuit breaker box or service panel--is the central distribution point that connects the primary outside wire to



What Is a Distribution Box?

With replaceable receptacles, distribution boxes are versatile. You can customize them to match your electrical application. Some distribution boxes

How to solve the problem of distribution box?

If you're not sure, it's best to contact a professional electrician for repairs. Preventive



measures: Once the fault is resolved, regular inspection and maintenance of the distribution box is recommended to

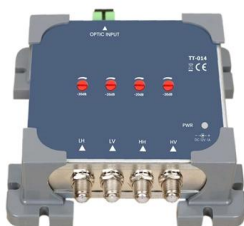


How To Test A Breaker Box With A Multimeter? Troubleshooting Guide

By learning how to use a multimeter to test your breaker box, you can diagnose problems quickly and accurately, saving you time and money on costly repairs. This knowledge empowers you

DB BOX(Electrical Distribution Box): Everything You

Learn everything you need to know about the Electrical Distribution Box (DB Box). Explore types, materials, installation tips, etc.



How to Tell if a Fuse is Blown in a Distribution Box

Learn how to identify a blown fuse in your distribution box. Find signs, test methods, and replacement tips for safe and effective troubleshooting.



The Importance of Distribution Boxes in Electrical Systems

Learn more about how distribution boxes play a critical role in the safe and efficient operation of electrical systems.



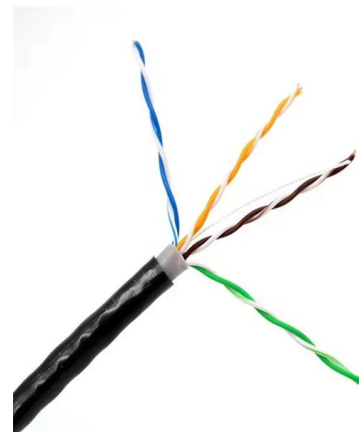
How to Fix an Electric Box

In this video, we show you how to fix an electric box safely and effectively. From diagnosing common issues like loose wiring or damaged components to provide



How to Repair or Replace a Damaged Electrical Box

Restore the structural integrity of your electrical system. Learn safe diagnosis, non-invasive repair methods, complete box replacement



What is the Function of a Distribution Box in Electrical Systems

Understand the function of the distribution box in electrical systems and how it ensures safe and efficient power distribution.



The Complete Guide to Distribution Box: Installation, Types & More

Blog The Complete Guide to Distribution Box: Installation, Types & More By Admin Aug 2, 2025 No Comments # distribution box Introduction Electrical systems power our homes, offices, and

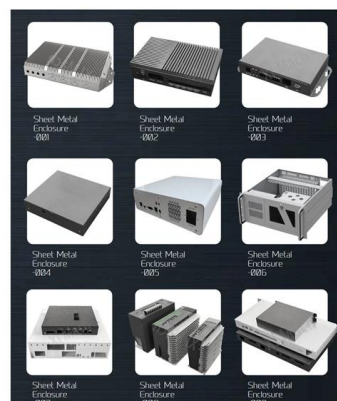


Meter Box Repair: Most Common Issues & How to Fix

Learn professional techniques for diagnosing and repairing common electric meter box issues, including weather damage, loose connections, and

How to solve and prevent the failure of the distribution

To sum up, qualified construction and maintenance operations, in conjunction with standards and safety measures, can effectively prevent and solve distribution box





Understanding Distribution Boxes: A Comprehensive Guide

A distribution box, also known as a power distribution box or electrical distribution box, is used to distribute electrical power safely to multiple

How To Repair A Outlet Box That'S Broken

Fixing a loose or broken electrical outlet box is manageable with the right tools. Start by checking if the outlet box feels loose when plugging or unplugging devices, often due to cracked



Beginner's Guide to Electrical Panel Troubleshooting

The electrical panel, also known as a breaker box or distribution board, serves as the central hub for your home's electrical system. It receives electricity from the utility company and

How To Fix Broken Electrical Box With Loose Or Sagging Outlet

On this episode I'm going to show you how to fix broken electrical box with loose or sagging outlet or switch! DIY for beginners! DO YOU HAVE QUESTIONS ON YOUR HOME REPAIR OR DIY PROJECT? GET TIPS



Repair A Broken Electrical Box with Easy Steps

My standard choice was to replace the electrical box. The G-Clip provides the option to repair if possible. Sometimes the electrical box is broken more than just the screw hole, so it would



How to Inspect a Residential Electrical Distribution Panel

How to Inspect Electrical Panels, list of defects, safety hazards, safety for the inspector. Electrical panel inspection procedures: How to inspect electrical panels - the main panel Inspecting the electrical



Common Issues and Troubleshooting for 3 Phase Electrical Distribution Boxes

Conclusion Maintaining and troubleshooting a 3 Phase Electrical Distribution Box is crucial to ensuring smooth and reliable power distribution for industrial and event setups. By





How to fix broken electrical box w/o drywall work

How do you fix a broken electrical box like this? It holds the heated floor control panel. The box just falls out - you can see a broken plastic piece at

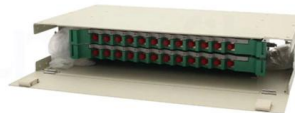


Distribution Box Guide: Types, Components & Solutions

Understand distribution boxes (DB boxes) in 5 minutes. Learn about types, components, functions, and uses. Find the perfect DB box for your needs.

Power Distribution Box

Be sure that the power distribution box has sufficient power provided to it. Long cable runs can result in a voltage drop, which can be solved by using a heavy gauge wire. Check wires/DIN terminal clasps



Where Is the Distribution Box Located and How to Find It

Learn where distribution boxes are typically located in homes and get step-by-step instructions for finding your electrical panel. Includes safety tips and



What Is an Electrical Distribution Box and Why Is It

An electrical distribution box distributes power safely, prevents overloads, and protects circuits, ensuring efficient and reliable electrical systems.



Contact Us

For datasheets, pricing, or custom telecom energy solutions, please visit:
<https://koskolong.co.za>