



The function of distribution cabinets and multi-circuit distribution boxes





Overview

Electrical control panels and distribution boxes are the backbone of modern electrical systems. From powering homes and industrial facilities to supporting medium-voltage infrastructure, these enclosures ensure safe, efficient, and reliable power distribution. It ensures that electricity is delivered safely and efficiently to different sections of a building or facility.



The function of distribution cabinets and multi-circuit distribution b



Basic knowledge of distribution cabinet and distribution box

Function: it is mainly used to distribute energy, distribute the main power supply to each power branch switch, and connect and disconnect the branch power supply

Power Distribution Cabinet - Types, Functions & Uses

Simply put, a distribution cabinet is an enclosure that contains circuit breakers, relays, busbars, and monitoring devices. It ensures that electricity is



Uncovering the Secrets of Power Distribution Cabinets:

Power distribution cabinets are pivotal components in modern electrical systems, ensuring the seamless flow of electricity to various circuits,



The Importance of Distribution Boxes in Electrical Systems

A distribution box is an exposed or concealed metal box that houses the circuit breakers that



regulate the distribution of electricity throughout
a



Ultimate Guide To Distribution Boxes Db Boxes Types

This ultimate guide explains what a distribution box does, its internal components, common types, real-world applications, and how to select the right DB Box for



Understanding Distribution Boxes: Your Guide to Power

Distribution boxes, or electrical junction boxes as they are sometimes called, play a vital role in electrical systems. They act as the central location



Explore Power Distribution Box Types and Functions

Power distribution boxes are used in commercial and residential buildings and are part of the electrical system, also known as switchboards.





Power Distribution Cabinet - Types, Functions & Uses

Power distribution cabinet explained! Learn types, functions, and uses in industries. Discover DSY cabinets for safe, reliable power management.

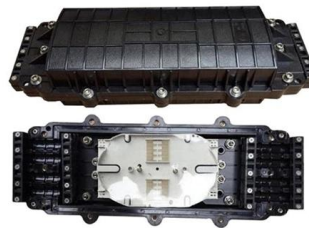


The various applications of distribution boxes

What is a distribution box? A distribution box, also known as a substation or power distributor, is a device that distributes electrical energy to

What is the Internal Structure of The Distribution Box

What is a Distribution Box? Definition A distribution box is an essential electrical component used to manage and control the flow of electricity



What Is an Electrical Distribution Box? A Complete Guide

What Is an Electrical Distribution Box? An electrical distribution box serves as a centralized unit for distributing electrical power within



How does electrical distribution cabinet function in an

Electrical distribution cabinets are critical components in modern electrical systems, providing a central point for distributing power and ensuring



Electrical Control Panels & Distribution Boxes: Sizes,

Electrical control panels and distribution boxes are the backbone of modern electrical systems. From powering homes and industrial facilities to

Power Distribution Cabinets: Centralized Solutions for

Explore the critical role of Power Distribution Cabinets (PDCs) in modern electrical systems. Learn about their evolution, centralized power





Distribution Boards

Distribution boards, often referred to as electrical panels or breaker boxes, serve as the nerve center of any electrical system. Here we explore the crucial parts of a distribution board and gain insights into

Distribution Box Guide: Types, Components & Solutions

It acts as a protective enclosure that houses several key components, such as circuit breakers, fuses, and bus bars. These components work together



Distribution Boxes: Types and Functions

A distribution boxes acts as the load center and main distributor of electrical power within a building. Also called a distribution board, panel board,

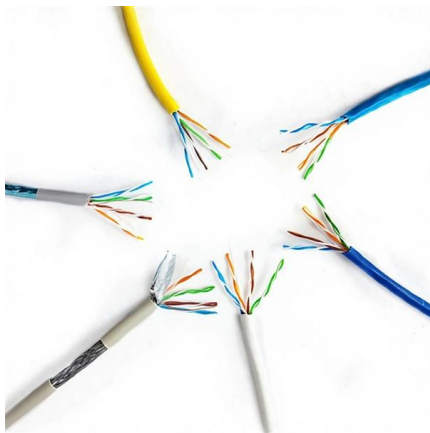
Distribution Box Guide: Types, Components & Solutions

Understand distribution boxes (DB boxes) in 5 minutes. Learn about types, components, functions, and uses. Find the perfect DB box for your needs.



Comprehensive Understanding of Distribution Box

A distribution box helps manage electricity in homes or workplaces. It makes sure power flows safely and efficiently to devices. Let's look at its main jobs. Power distribution and circuit management The



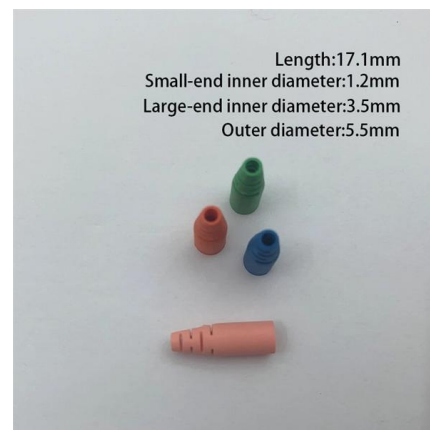
What Is The Internal Structure Of The Power Distribution

The distribution box is data on the sea of parameters, generally constitute low-voltage forest according to the electrical wiring, the requirements of



Distribution Boxes Explained: Types, Functions, and

Learn about distribution boxes, their types, functions, and safety features to ensure efficient and secure electrical power distribution in any building.



Complete Guide For Distribution Boxes Types

Functions of Distribution Boxes Protection: Distribution boxes shield electrical connections from environmental factors such as moisture, dust, and physical



Contact Us

For datasheets, pricing, or custom telecom energy solutions, please visit:
<https://koskolong.co.za>