



Adam Tas Corridor Energy

The main electrical distribution box is divided into upper and lower sections





Overview

North American distribution boards are generally housed in enclosures, with the positioned in two columns operable from the front. Some panelboards are provided with a door covering the breaker switch handles, but all are constructed with a dead front; that is to say the front of the enclosure (whether it has a door or not) prevents the operator of the circuit breakers from contacting live electrical parts within. The main power circuit breakers control all circuit breakers, and each circuit breaker controls all equipment. A distribution board (also known as panelboard, circuit breaker panel, breaker panel, circuit breaker, electric panel, fuse box or DB box) is a component of an electricity supply system that divides an electrical power feed into subsidiary circuits while providing a protective fuse or circuit. It plays a crucial role in ensuring the safe and efficient distribution of electrical power, helping to prevent overloads and short.



The main electrical distribution box is divided into upper and lower



Distribution boards components

Distribution boards (generally only one in residential premises) usually include the meter (s) and in some cases (notably where the supply utilities impose a TT earthing system and/or tariff

Distribution Boxes: Types and Functions

Also called a distribution board, panel board, breaker panel, or electric panel, it is the central hub in an electrical system that divides incoming



What is the Internal Structure of The Distribution Box

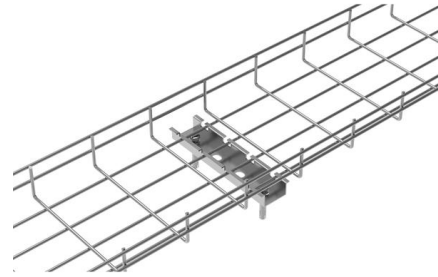
Electricity enters the distribution box from the main power supply. Once inside, the power is divided into separate circuits for different areas of the

Internal Structure of Distribution Box

This article discusses the construction of the distribution box, its functional divisions, and



selection tips. This article can help you better understand



The Ultimate Guide to Distribution Box Types

Discover the key types of distribution boxes with NUOMAK's comprehensive guide. Learn about Main Distribution Boards (MDB), Consumer Units, Transfer

Panelboards and Distribution Panels: What They Are

Introduction Navigating the world of electrical distribution can be confusing, with terms like panelboard, switchboard, and distribution box often



The Complete Guide to Distribution Box: Installation, Types & More

The main switch, or main breaker, controls the entire electrical supply to the distribution box. This large switch allows you to disconnect all power to the building during emergencies or



The Main Electrical Panel & Subpanels

The electrical meter is mounted at the main electrical panel. From here, power is distributed to subpanels and circuits throughout the house. Once



Electric power distribution

A 50 kVA pole-mounted distribution transformer
Electric power distribution is the final stage in the delivery of electricity. Electricity is carried from the transmission

10 Electrical Distribution System Arrangements Explained

Mimic bus symbols accurately reflect the distribution system arrangement that they are producing. Photo: Sage Controls, Inc. The primary



Electric Power Distribution System Basics

Distribution transformer: A distribution transformer, also called as service transformer, provides final transformation in the electric power distribution system.



Distribution Boxes Explained: Types, Functions, and

Learn about distribution boxes, their types, functions, and safety features to ensure efficient and secure electrical power distribution in any building.



Electrical Panel Box: Anatomy & How It Works , Penna

An electrical panel box or breaker box controls the entire electricity in your home, so it's important to know its components and how it works.



Distribution Box: Types and Functions , Axis-Electricals

As a component of an electrical system: it divides electrical power into subsidiary circuits and provides a protective fuse or circuit breaker for each





The essentials of electrical distribution systems every

Electrical distribution systems are an essential part of the electrical power system. In order to transfer electrical power from an alternating current (AC)

Distribution switchboards

A distribution switchboard is the point at which an incoming-power supply divides into separate circuits, each of which is controlled and protected by the fuses or switchgear of the



Distribution Boards

Distribution boards, often referred to as electrical panels or breaker boxes, serve as the nerve center of any electrical system. Here we explore the crucial parts of a distribution board and gain insights into

Distribution board

OverviewNorth AmericaUnited KingdomManufacturer differencesLocation and designationTheatre lighting

North American distribution boards are generally housed in sheet metal enclosures, with the circuit breakers positioned in two columns operable from the front. Some panelboards are



provided with a door covering the breaker switch handles, but all are constructed with a dead front; that is to say the front of the enclosure (whether it has a door or not) prevents the operator of the circuit breakers from contacting live electrical parts within. Busbars carry the current from incoming line (hot) conductors to the breakers

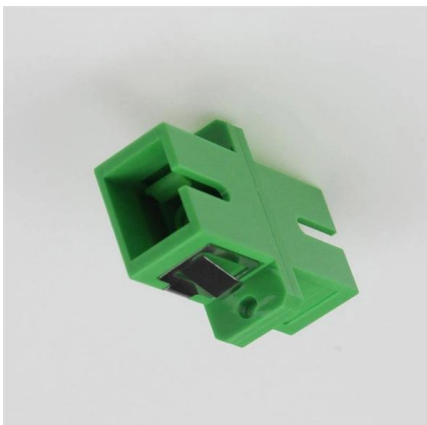


What Is A Distribution Board and How Does It Work? , TOSUNlux

What is a Distribution Board? A distribution board is essential for organizing and directing power in electrical systems. It splits the main power source into different circuits. It also enables safe

Distribution Boxes: Types and Functions

Learn what an electrical distribution box (DB/distribution board) is, its main components (MCB/RCCB/RCBO, SPD, busbar) and common types.



Lecture 5: Electrical Supply and Distribution

A distribution board is a component of an electricity supply system that divides an electrical power feed into subsidiary circuits, while providing a protective fuse or circuit breaker for each circuit in a



What is the Internal Structure of The Distribution Box

Learn about the internal structure of a distribution box, its components, functions, and key types. Understand its role in electrical systems and safety.



A Step-by-Step Guide to Wiring an Electrical Panel Box

Find out how to properly wire an electrical panel box with a comprehensive diagram and step-by-step instructions.

Understanding Distribution Boxes:A Comprehensive Guide

Understanding its significance, this article covers what a distribution box is, how it functions, its structure, the various types available, and how it



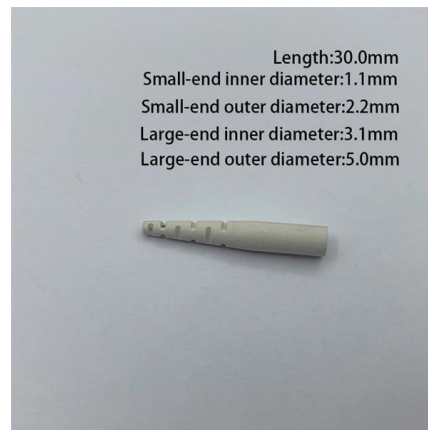
What is an Electrical Distribution Box? A

An electrical distribution box is often called the control hub of a building's electrical system, and for good reason. It's where power from the main



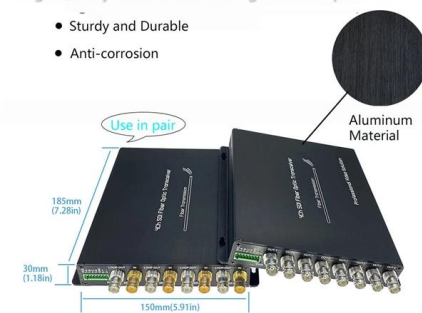
How to select the superior and subordinate of the circuit breaker in

The circuit breakers in the distribution box are divided into (upper level) main power circuit breakers and multiple (lower level) circuit breakers. The main power circuit breakers control all circuit breakers,



High Quality Aluminum Housing with Compact Size

- Sturdy and Durable
- Anti-corrosion



12 types of distribution boxes and how to choose them

Distribution boxes, often called breaker boxes or fuse boxes, are basically the central hub where electricity from your main supply gets divided into different circuits.

Distribution Box Guide: Types, Components & Solutions

Understand distribution boxes (DB boxes) in 5 minutes. Learn about types, components, functions, and uses. Find the perfect DB box for your needs.





Contact Us

For datasheets, pricing, or custom telecom energy solutions, please visit:
<https://koskolong.co.za>