



Adam Tas Corridor Energy

The primary distribution box is required to trip within a few seconds





Overview

Busbar protection (BBP): Protection intended to detect and operate to clear faults on a busbar. This means that lower levels of current will allow the breaker to remain online for longer periods of time. The tripping time characteristics are: The instantaneous protection pickup I_i is set by using the I_i rotary switch on the front face of the TStrip system. After the occurrence of a fault, the circuit breaker will be tripped by the protection functionality of the protected feeder followed by an automatic reclosing or an AR-shot, which is a function where the circuit breaker is automatically reclosed after a set time delay. The distribution switchboard enclosure provides dual protection: The protection of human life against the possibility of direct and indirect electric shock (see degree of protection IP and the IK index in List of external influences).



The primary distribution box is required to trip within a few seconds

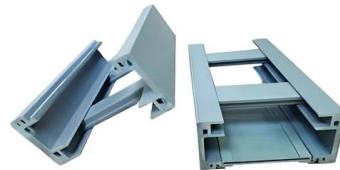


The Importance of Distribution Boxes in Electrical Systems

Learn more about how distribution boxes play a critical role in the safe and efficient operation of electrical systems.

BUSBAR PROTECTION

Busbar protection may simultaneously trip a number of bus segments or even an entire busbar of a substation which may then lead to the loss of important assets. If generation or big loads are



Marine Insight

Preferential trips on ships disconnect non-essential circuits during partial failure or overload, ensuring safety and efficiency in marine electrical systems.

6 Adjustable Tripping Settings of a Circuit Breaker , EEP

Continuous Amps Long-Time Delay Short-Time Pickup Short-Time Delay Instantaneous



PickupGround Fault PickupShort-time pickup is used for selective tripping. The short-time pickup function determines the amount of current the breaker will carry for a short period of time, allowing downstream protective devices to clear short-circuits without tripping the upstream device. For example, a 1000 ampere frame can be adjusted to trip anywhere from 1500 to 10,000 See more on electrical-engineering-portal Schneider Electric



Instantaneous Overcurrent Protection (I or ANSI 50)

Presentation Instantaneous protection helps to protect equipment against phase-to-phase, phase-to-neutral and phase-to-ground short circuits. The protection operates with a definite time characteristic.

6 Adjustable Tripping Settings of a Circuit Breaker , EEP

Basic tripping settings of CB There are (at least) six basic adjustable tripping settings (functions) you really should understand in order to fully



Distribution switchboards

Three basic technologies are used in functional distribution switchboards. These units cannot be isolated from the supply so that any intervention for maintenance, modifications and so on,



What are the situations of small power distribution unit tripping?



How

Small power distribution unit tripping usually has the following situations: Overload: When the load connected to the circuit exceeds the load capacity of the distribution box and circuit design, it will

Home []

Defense Counterintelligence and Security Agency QUANTICO, Va. - The Department of War has selected Joseph M. Tonon, Ph.D. as the next Director of



Single Phase Distribution Box Definition and Main Parts

A single phase distribution box controls and protects home or office circuits. Learn its definition, main parts, and how it ensures electrical safety.



Style Guide

After the occurrence of a fault, the circuit breaker will be tripped by the protection functionality of the protected feeder followed by an automatic reclosing or an AR-shot, which is a function where the





Standard tripping schemes and trip circuit supervision

Even though the functional requirements of schemes remain the same, there is always a variation from project to project depending upon the following

What Causes an Electrical Distribution Board to Trip?

Discover why your electrical distribution board keeps tripping. Our Cape Town electricians explain common causes, safety tips, and when to call a professional.

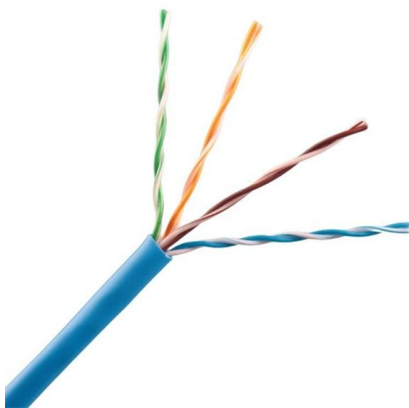


RCCB Tripping Problems and What To Do

This is an in-depth look at RCCB tripping problems and how to test the RCCB to determine the cause the cause of random or nuisance trips.

Common Issues and Troubleshooting for 3 Phase Electrical Distribution Boxes

Conclusion Maintaining and troubleshooting a 3 Phase Electrical Distribution Box is crucial to ensuring smooth and reliable power distribution for industrial and event setups. By

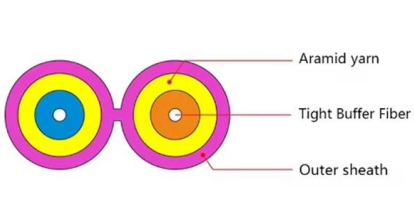
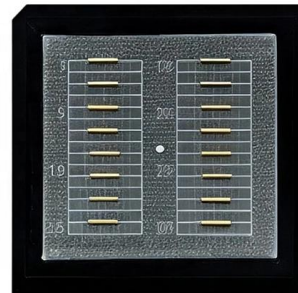


Gartner Business Insights, Strategies & Trends For

Gain strategic business insights on cross-functional topics, and learn how to apply them to your function and role to drive stronger performance and innovation.

Common Issues with Distribution Boards and How to Address Them

However, like any other component of an electrical system, distribution boards can develop issues over time, affecting electrical safety and performance. We will explore some of the



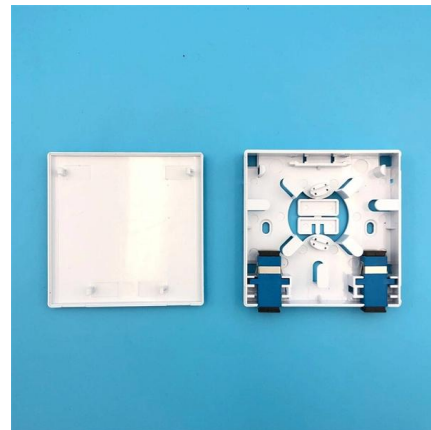
Why is there always a switch trip in the home distribution

There is always a switch trip in the distribution box. There are only five possible reasons. Let me give you a detailed explanation. 1. Switch damage



Power Distribution , Troubleshooting

Use a volt meter to measure voltage at the power supply and at the power distribution box. Be sure that the power distribution box has sufficient power provided to it.



Distribution Box Guide: Types, Components & Solutions

The primary function of a distribution box is to route electricity from the main supply to different circuits throughout a building. This ensures that all

Electric distribution box wiring tutorial (very simple and practical)

In this video, we are going to wire a power distribution box. This small box has an rccb switch that protects the outputs from electric shock and also has a miniature switch that protects the



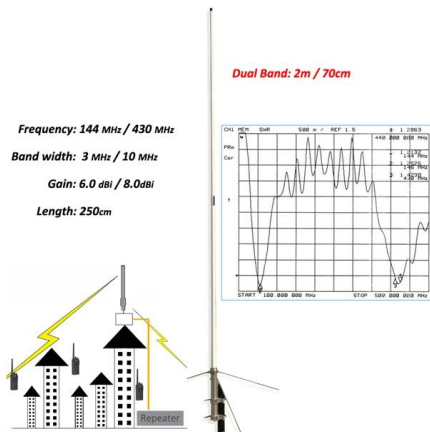
Safety in electrical panels and switchboards

An electrical panel, often referred to as a breaker panel or service panel, distributes electricity to various circuits within a building. Switchboards, on the other hand,



Practical Guide to Selective Protection Coordination

Selective coordination refers to the strategic arrangement and setting of protective devices (such as circuit breakers, fuses, and relays) within an electrical system to



Common troubleshooting of distribution boxes: analysis of causes of

Distribution boxes are the unsung heroes of our electrical systems, quietly managing power until something goes wrong. When they start tripping, overheating, or making strange noises, it's more

How Does a Power Distribution Box Work

Learn how a power distribution box works step by step--from incoming power to circuit protection and smart monitoring--for safe, efficient electricity delivery.





Contact Us

For datasheets, pricing, or custom telecom energy solutions, please visit:
<https://koskolong.co.za>