



**Adam Tas Corridor Energy**

# **The telecommunications equipment box is located at the entrance of the workplace**





## Overview

---

1 defines the entrance facility (building entrance) as the point in the building where cabling connects to the outside world.



## The telecommunications equipment box is located at the entrance of

---



### CNT 140 Chpt 1-17 Flashcards , Quizlet

The horizontal cabling system extends from the telecommunications outlet in the work area to the horizontal cross-connect in the telecommunications room. It

## Chapter 2 Structured Cabling Systems

A MUTOA (Multi-user Telecommunications Outlet Assembly) is a specialized telecommunications outlet assembly located in work area clusters, MUTOAs are suitable for use in open office spaces that are



### Telecommunications Infrastructure Specifications

telecommunications space: A room used for housing the installation and termination of telecommunications equipment and cable, e.g., equipment rooms, server rooms, telecommunications

## The 6 components of Structured Cabling

The entrance facility is where the external telecommunications services enter the building.



It's the point of demarcation between the service



### Appendixf Struc Cabl Guide 7-11-08revised-9-2010-10

Appendixf Struc Cabl Guide  
7-11-08revised-9-2010-10 - Free download as PDF File (.pdf), Text File (.txt) or read online for free. The document discusses requirements for equipment rooms including that

### Telecommunication Room (TR) Requirements & Standards v3.2

Where possible a TR should be dedicated solely to telecommunications. A TR should not contain electrical and mechanical equipment, fire alarm panels (permissible on a case by case basis), sinks



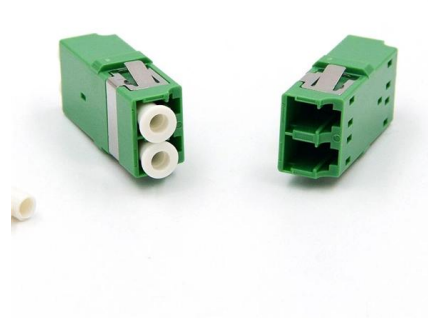
### TIA/EIA-569-A Standard: Telecom Pathways & Spaces

The entrance facility may contain public network interface devices as well as telecommunications equipment. The standard recommends that the location of



## Structured Cabling System

6. Work Area o Work area (WA) components extend from the telecommunications outlet/connector end of the horizontal cabling system to the WA equipment. o A



## 270000 Telecom Construction Standards and

If the main telecommunications room is not located at the conduit entrance point, EMT or rigid metal conduit shall be extended from that point into the main



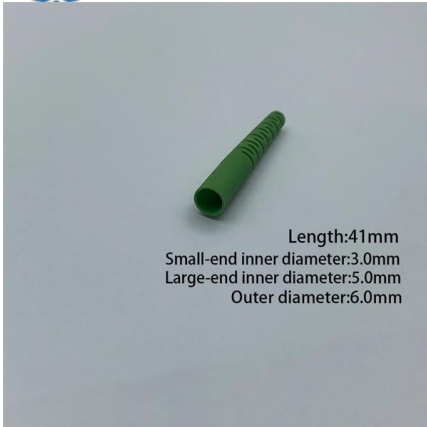
## Section 271100

Entrance Telecommunications Room (ETR): An enclosed architectural space for housing telecommunications equipment, cable terminations, and cross-connect cabling. This room is where



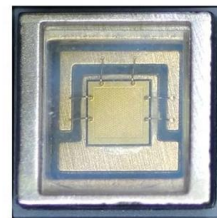
## Chapter 2 Structured Cabling Systems

the telecommunications service entrance to the building, including the entrance through the building envelop (exterior wall, ground level slab, roof) into the building interior, and continuing to the



### The Six Areas of Structured Cabling

Building Entrance Building entrance facilities are the point where outside telecommunications cabling connects with the backbone cabling inside the



### SECTION 271100 -- COMMUNICATIONS EQUIPMENT ROOM

No Telecommunications Room shall contain equipment installed for other systems, trades, or departments. This includes, but is not limited to Fire Alarm Control Panels, Access Control

### The Six Subsystems of a Structured Cabling System

Work area (WA) components extend from the telecommunications outlet /connector end of the horizontal cabling system to the WA equipment. A minimum of two telecommunications outlets (permanent



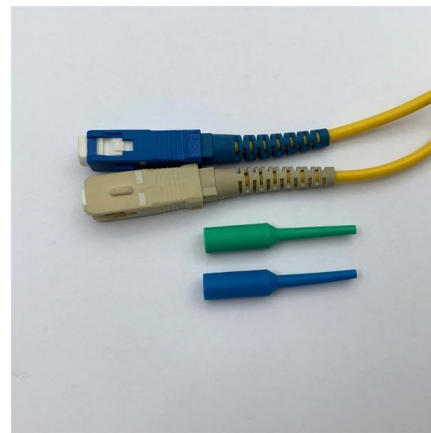


## When planning the installation of LAN cabling

Telecommunications Room (Distribution Facility): This is the centralized area where the cabling from the work areas is terminated and connected to the backbone

## Entrance Facility Design Standards , PDF , Business

An entrance facility is a room where cables from antennas, public networks, and private networks can enter a building. It should be located near the entrance point



## Structured Cabling System - Commsource

The six components of structured cabling are the following: Entrance Facilities Equipment Room Backbone Cabling Telecommunications Room Horizontal

## TIA/EIA 568 Standard: Structured Cabling Specification

Building Entrance Requirements These are the specifications for the point at which the cabling enters a building. These include the type of surge



## 27 11 00

To minimize both conduit and cable lengths, the ER shall be located as close as practical to the center of the building. ER shall be a minimum of 10' by 10'.



## Structured Cabling System: An Overview of the Six Major Components

Entrance Facilities, Equipment Room, Backbone Cabling, Telecommunications Room, Horizontal Cabling, and Work Area are the six components of structured cabling.



## Low Profile Structured Cabling System , FreeAxez

Building entrance facilities are the point at which outside telecommunications cabling connects with the backbone cabling inside a building (Also known as the





## STS-1000 TELECOMMUNICATIONS WIRING GUIDELINES

Each telecommunications space (equipment room, telecommunications room, work area, entrance facility, manhole and handhole) shall be uniquely identified and labeled.



### Know the 6 subsystems of a structured cabling system

6. Work Area Work area (WA) components extend from the telecommunications outlet/connector end of the horizontal cabling system to the

## Telecommunications Rooms 101

A comprehensive guide to understanding the importance and best practices of telecommunications rooms in building technology, ensuring reliable and efficient data transmission.



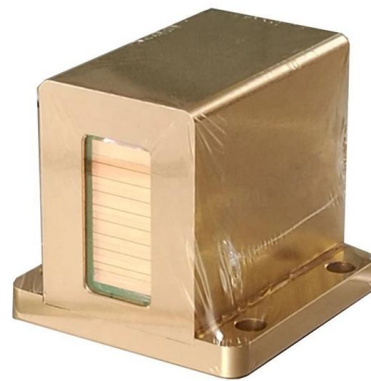
### Understanding the Telecommunications Entrance Facility

The telecommunications entrance facility (TEF) is the entry point where all telecommunications facilities enter a building, including the joining of inter- and intrabuilding



### Service Entrance Equipment

The Service Entrance is where power enters the drop. The service equipment have electric meter, which measures the amount of electricity provided to the home,



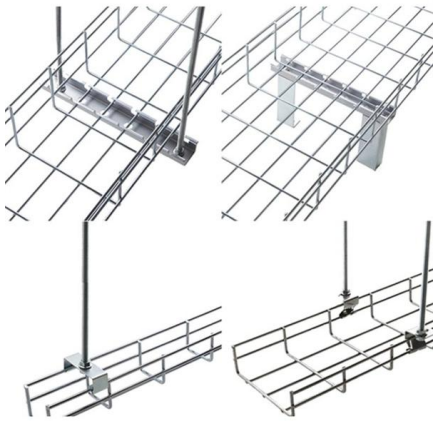
### The 6 Components Required for Commercial Structured

5: Horizontal Cabling Horizontal cabling is the physical system of cables that connects telecommunications rooms to information outlets in the work

### 1910.268

This section sets forth safety and health standards that apply to the work conditions, practices, means, methods, operations, installations and processes performed at telecommunications centers and at





## Understanding Structured Cabling

Entrance Facilities contain cables, network demarcation point (s), connecting hardware, protection devices, and other equipment that connect on

## Contact Us

---

For datasheets, pricing, or custom telecom energy solutions, please visit:  
<https://koskolong.co.za>