



Adam Tas Corridor Energy

Three sets of wires in the distribution box





Overview

When an electrical box for an outlet has three separate cables entering it, this signals a standard circuit branching scenario. The box is located in the middle of a continuous circuit run: one cable brings power in, and the other two carry power out to feed devices, lights, or. Wiring three cables to a single duplex outlet is common in residential electrical work. To correctly set up a 3-circuit connection, start by ensuring proper identification of each terminal involved. We'll look at the tools and safety measures needed, as well as provide step-by-step instructions on how to make sure it's done correctly.



Three sets of wires in the distribution box

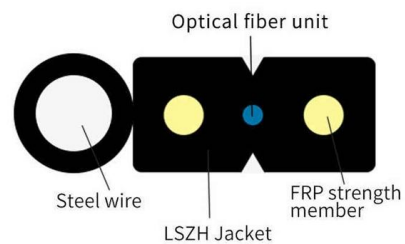


The Complete Guide to Distribution Box: Installation, Types & More

What's the difference between a distribution box and a sub-panel? A distribution box typically refers to the main electrical panel that receives power from the utility service. A sub-panel is

3 Sets Of Wires In One Outlet? (Explained)

Every set of wires in an outlet has its purpose. However, we can easily convert 3 sets of wire into one set with the help of a particular technique. The



How To Connect 3 Wires In A Junction Box » Wiring Work

Connecting three wires in a junction box may seem intimidating at first, but with the right tools and safety measures, it can be accomplished easily.

How do I correctly wire this box with three sets of wires?

I'm replacing a light fixture in my kitchen and the box has three sets of wires. The fixture I



removed had the black wire connected to the two black wires

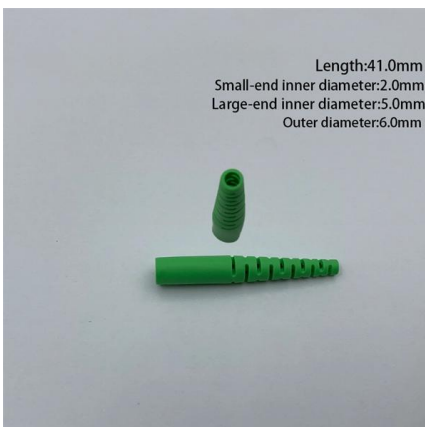


Phases and wires in distribution of AC power

Distribution of AC power AC power transmission is always at high voltage and mostly by 3-phase system. The use of single-phase system is limited

How to Install a Cable Distribution Box Safely and

In modern electrical systems, cable distribution boxes (also known as electrical distribution boxes or distribution boxes) play a crucial role as the key



Length:41.0mm
Small-end inner diameter:2.0mm
Large-end inner diameter:5.0mm
Outer diameter:6.0mm

Distribution Box Installation: A Complete Guide to Safe

The distribution box, often referred to as a breaker box, fuse box, or electrical panel, is a critical component of any electrical system. It acts as the central hub for



How to Wire Three Sets of Wires in One Outlet

Wire three power cables into a single outlet box correctly. Learn essential pigtail techniques and crucial safety compliance standards.



Everything You Need to Know About Wiring a 3 Way

Wire nuts - These are used to secure and connect the wires together within the junction box. Electrical wires - You will need a sufficient length and gauge of

How to determine the size, installation method and

(1) Wiring method of distribution box 1)
Generally, the incoming line of power distribution box adopts five wire system, that is, a, B and C three-way phase line

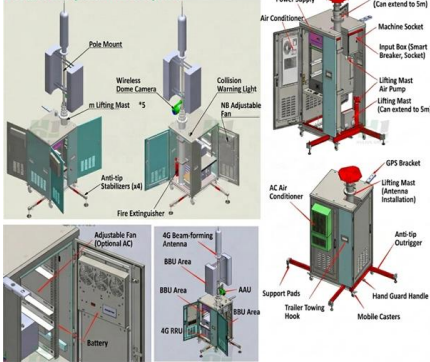


3 Wire Wiring Diagram Explained and Setup Guide

Learn how to read and create a 3 wire wiring diagram for various electrical systems. Step-by-step guide with tips for proper wiring connections and safety.

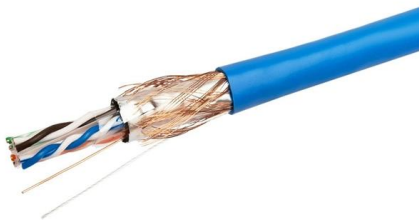


Product Composition Description



Explain in detail the connection method of the three-phase five-wire

Explain in detail the connection method of the three-phase five-wire system of the distribution box 30-06-2022



The installation requirements for the distribution box

Learn how to install a distribution box safely and correctly. Covers wiring, placement, standards, and expert tips for a compliant setup.

A Definitive Guide To Distribution Boxes

The distribution box acts as the center of power distribution, distributing electricity to all connected devices. A distribution box, also known as a distribution board, panel board, breaker





Why Does My Outlet Have 3 Black Wires And 3 White

Understanding the roles of these wires can boost your confidence when working with them. The presence of three black and three white wires signifies that the outlet is

How to Wire an Outlet With 3 Sets of Wires

The correct method for connecting three sets of wires to a single duplex outlet is "pigtail." This technique simplifies the connection and prevents the current for all downstream

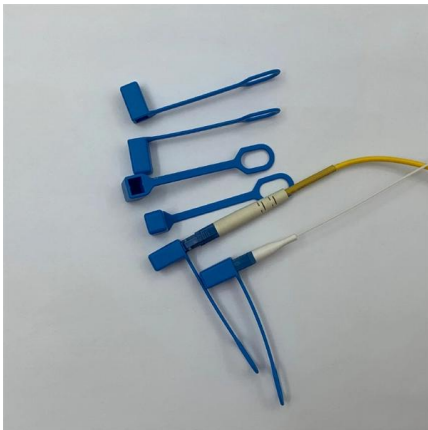


Complete Guide For Distribution Boxes Types

Distribution boxes, also known as junction boxes, electrical boxes, or panelboards, are essential components in electrical distribution systems. They serve as

A guide to three wire junction boxes

A three wire junction box is an essential component in electrical installations that allows for the connection and distribution of electrical wires. It provides a safe and convenient way to connect



How To Connect 3 Wires In A Junction Box » Wiring Work

In this article, we will explore the complexities of connecting three wires in a junction box. We'll look at the tools and safety measures needed, as

Size determination, installation method and wiring mode

The distribution box is the central hub of the home circuit and the general control of our daily power consumption. It is an indispensable electrical equipment. If there



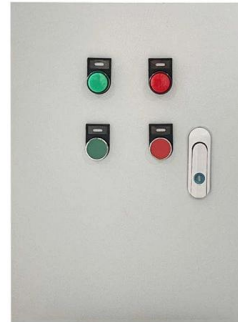
electrical

Two of the black wires connect directly to a switch, and the third black wire connects to both switches via a wire nut. The three ground wires get



House Electrical Wiring Connection Diagrams

Electrician created these house electrical wiring diagrams of all the electrical wiring connections that are found in your residential outlet boxes, switch boxes, and light boxes.



WORLD WIDE WEB JOURNAL Home

O'Reilly & Associates, Inc. 103A Morris St.
Sebastopol, CA United States

Distribution Box Wiring Steps

?Wiring Direction?: Wiring between the main circuit breaker and each branch circuit breaker in the box generally goes on the left, and the wiring out of



How to Wire a Home Distribution Box

How to Wire a Home Distribution Box - Step-by-Step , Distribution DB box wiring diagram
Welcome to our channel! In this video, we'll walk you through the



How to Wire a Home Distribution Box

Main Distribution Board or Fuse Boards (Consumer Unit) usually contains on the following three main units to control and distribute electric supply



on video How to Wire a Home Distribution Box

Main Distribution Board or Fuse Boards (Consumer Unit) usually contains on the following three main units to control and distribute electric supply to the different

Contact Us

For datasheets, pricing, or custom telecom energy solutions, please visit:
<https://koskolong.co.za>