



**Adam Tas Corridor Energy**

# **Tonga Optical Cable Laying**





## Overview

---

Tonga Cable System is a system connecting with, where it connects to other international networks. It has cable landing points at Sopo, a suburb of Nuku'alofa in Tonga, and Suva, Fiji. A volcanic eruption in the South Pacific Ocean in January 2022 caused a tsunami and damaged an undersea fiber-optic telecommunication cable that connects Tonga, a Polynesian archipelago, to the rest of the world. The cable cost was around T\$36 million and was financed through grants from the World Bank Group and the Asian Development Bank. Not a metro area, not a data center cluster — a sovereign nation of roughly 105,000 people, spread across an archipelago of more than 150 islands in the South Pacific, whose international connectivity depends on a.



## Tonga Optical Cable Laying

---



### How will Tonga's broken internet cable be mended?

It is estimated that there are more than 430 cables around the world, spanning distances of 1.3 million km (800,000 miles) An undersea fibre-optic

### Tonga Cable: Fiji to Tonga 827 km Pacific Submarine Cable

Tonga Cable is a point-to-point submarine system connecting Sopo, Nuku'alofa (Tonga) and Vatuwaqa, Suva (Fiji), with a total length of approximately 827 kilometers.



### Tonga Cable System

Tonga Cable System is a submarine fiber-optic cable system connecting Tonga with Fiji, where it connects to other international networks. It is 827 kilometres (514 mi) long and was activated in 2013.

### PAM: Tonga: Tonga-Fiji Submarine Cable Project

The Tonga-Fiji Submarine Cable Project will support the development and operation of a



submarine fiber optic communication cable system linking Tonga to Fiji where an existing international



### **Tonga's volcano eruption has destroyed it's fibre optics.**

Tonga's crucial single undersea fibre optic cable was severed on January 15 after a volcanic eruption and subsequent tsunami.



### **44172-022: Tonga-Fiji Submarine Cable Project**

The project was designed with two outputs: (i) link Tonga to the submarine fiber optic cable network via connection through Fiji, a distance of 827 km, enabling the country to connect onward to the



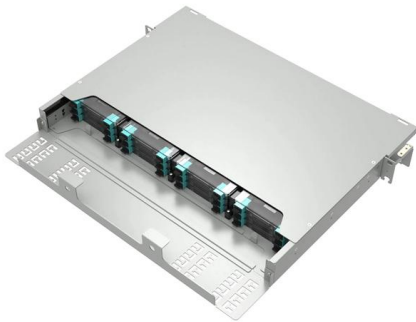
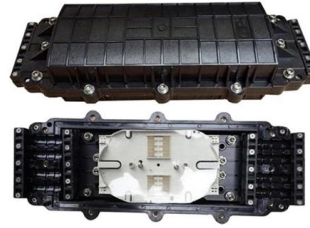
### **Tonga Cable Ltd celebrates 10th anniversary with fibre**

Nuku'alofa, Tonga: Tonga Cable Ltd marked its 10th year anniversary celebration with a Grant signing for the second Fiber-optic International Cable for



## Laws governing undersea cables have hardly changed

Given their vital role in communications, the global economy and security, the rules governing undersea cables need overhauling.



## The Day the Internet Died: How an Underwater Cable

Now, Tonga was officially alone, with no physical or digital connection to the outside world and no way to call for help. Underwater, the middle portion of

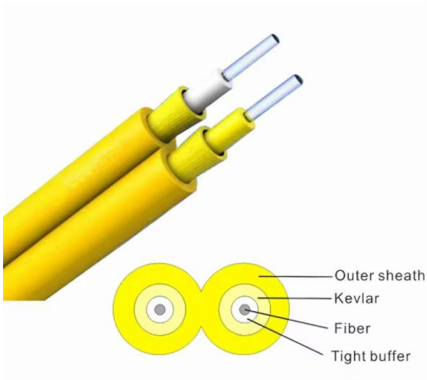
## Volcano Damage to Tonga Undersea Cable Worse

The volcanic eruption near Tonga shredded an 80-kilometer (50 mile) stretch of undersea cable, complicating efforts to reconnect the Pacific kingdom



## Tonga Cable System Explained

Tonga Cable System is a submarine fiber-optic cable system connecting Tonga with Fiji, where it connects to other international networks. It is long and was activated in 2013.



### Tonga domestic fibre optic cable may take year to replace -

The Tonga domestic telecommunications cable that was torn apart by tremendous forces and deeply buried under volcanic debris on the ocean floor

Ordering information

NO.	1	2	3	4
Model	F1401	F1402	F15101	F15104
Product name	Patch Panel	Patch Panel	Patch Panel	Patch Panel
Illustration				
HZ	1	2	3	4
Maximum number of ports	24	48	72	96
Product size (including module and adaptor)	482.0*208.7*42.3mm	482.0*208.7*84.6mm	482.0*208.7*126.9mm	482.0*208.7*172.2mm
Standard color code	RAL9005	RAL9005	RAL9005	RAL9005



### Tonga Cable Submarine Fiber Optic Cable System

Submarine fibre optic cable system TCL Station Fintel Station Cable Laying PLOW ROV Cable Laying on Seabed Cable landing in Tonga Tonga

### fibre optic cable , Matangi Tonga

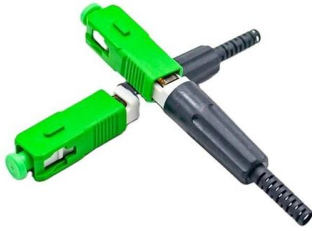
Tonga's domestic fibre optic telecommunications cable was torn apart by tremendous forces and deeply buried under volcanic debris on the ocean floor. It may take up to a year to fix. Tonga Cable Ltd. is





## Tonga Cable System

Tonga Cable System is a submarine fiber-optic cable system connecting Tonga with Fiji, where it connects to other international networks. It is 827 kilometres (514 mi) long and was activated in 2013. It has cable landing points at Sopo, a suburb of Nuku'alofa in Tonga, and Suva, Fiji. The project was funded by Asian Development Bank and the World Bank. An extension of the cable to Ha'apai and Vava'u was commissioned in April 2018.



## Tonga Cable

The Tonga-Fiji Submarine Cable System (also known as Tonga Cable) is a 827km fiber optic submarine cable system linking Nuku'alofa, Tonga and Suva, Fiji, and connects to the Southern Cross Cable



Length:33.5mm  
Small-end inner diameter:4.0mm  
Large-end inner diameter:6.0mm



## How engineers will reconnect Tonga's broken internet

The South Pacific nation of Tonga was all but cut off from the world after an undersea communications cable was severed following the massive

## Tonga Needs a Hybrid Connectivity Solution

Today, I was invited to a pivotal meeting with the Ministry of Public Enterprises concerning Tonga Cable Ltd's second international submarine fiber



### **A volcanic eruption severed communications in Tonga.**

A volcanic eruption in the South Pacific Ocean in January 2022 caused a tsunami and damaged an undersea fiber-optic telecommunication cable



### **Alcatel-Lucent wins contract to lay Tonga fibre-optic**

Nuku'alofa, Tonga: Alcatel-Lucent Submarine Network of France won the contract to lay a submarine fibre-optic cable system from Fiji to Tonga, which



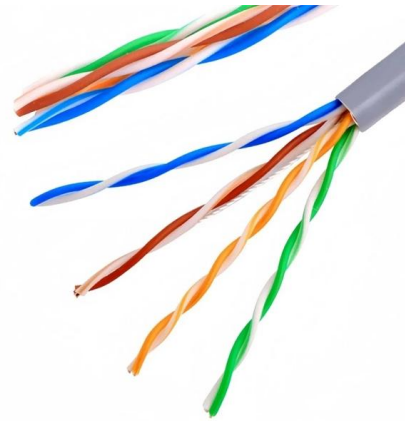
### **Torn apart, missing 110km domestic fibre optic cable**

Tonga's domestic fibre optic telecommunications cable was torn apart by tremendous forces and deeply buried under volcanic debris on the ocean floor.



## Tonga Cable System Explained

What is Tonga Cable System? Tonga Cable System is a submarine fiber-optic cable system connecting Tonga with Fiji, where it connects to other



## Tonga Cable Limited - Tonga

Tonga Cable Limited (TCL) owns and manages the fibre-optic submarine cable, connecting Tonga to Fiji, which was commissioned in August 2013. The cable

## Tonga Cable: Fiji to Tonga 827 km Pacific Submarine Cable

Tonga Cable is the 827 km submarine cable linking Suva (Fiji) and Nukualofa (Tonga). Operated by Digicel Tonga and Tonga Communications, RFS 2013. Live latency.



## Tonga struggles with internet outages, considers Starlink amid cable

The government considers granting the license to enhance broadband access, especially amid repeated cable disruptions caused by natural disasters. Former head of the Tonga Cable



## Tonga Cable System

Tonga Cable System is a submarine fiber-optic cable system connecting Tonga with Fiji, where it connects to other international networks. It is 827 kilometres (514mi) long and was activated in 2013.



## Tonga Cable

Cable length - 827kms 1 fibre pair System  
Capacity - 320Gbps Initial capacity configured - 20Gbps System lifetime - 25yrs Wet plant + Dry plant

## Contact Us

---

For datasheets, pricing, or custom telecom energy solutions, please visit:  
<https://koskolong.co.za>