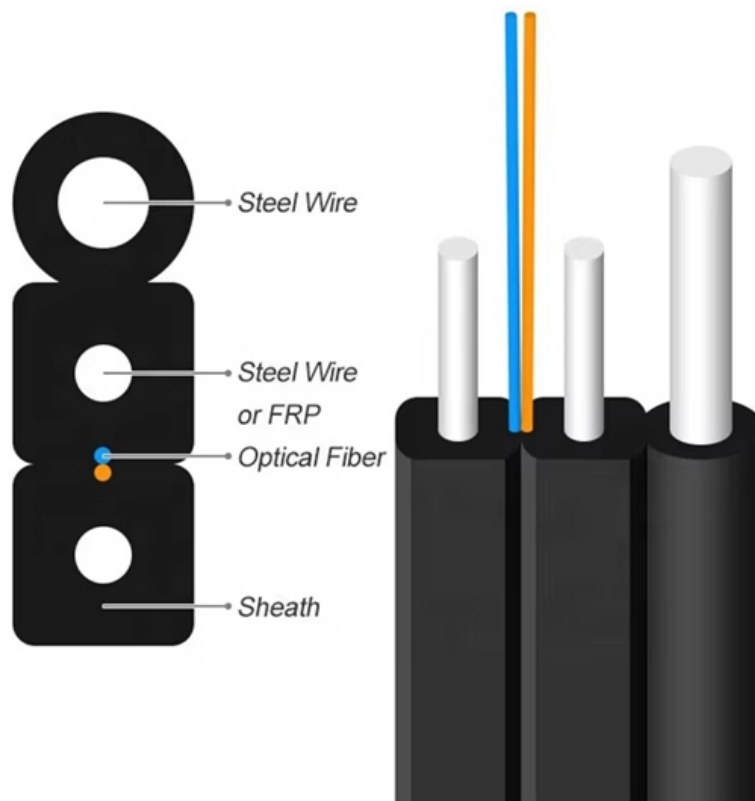




# Transformer core model for distribution box





## Transformer core model for distribution box

---



### A new approach of core structure model for 3-phase distribution

This study proposed a new T-joint configuration for the core of the 3-phase transformer. The proposed model was built after considering the variation of load and thermal profiles.

### Technical Specification of Distribution Transformer

In the event of direct conflict between various order documents, the precedence of authority of documents shall be as follows:



### AC/DC Module Model Library

This example demonstrates how to perform transient simulations of a single-phase E-core transformer. Including the effect of a nonlinear B-H curve in the soft-iron core, the model computes the spatial

### A new approach of core structure model for 3-phase distribution

The no-load losses of the proposed model were reduced by more than 6.8% and 10% compared



with those of the butt-lap and mitered T-joint designs, respectively. Furthermore, the total losses, the hot



### Magnetic flux distributions in transformer core joints

Download Citation , Magnetic flux distributions in transformer core joints , This paper presents results of a rigorous analytical study performed in order to understand the role which joints



### Modeling of Three-Phase Distribution Transformer for Analysis of Core

Abstract This article presents modeling of three-phase 315 kVA-distribution transformer. The analysis of magnetic flux density, core loss, and ohmic loss of the transformer is done using 3D finite element



### Distribution Automation Handbook

3.14 Primary Distribution Substations A primary distribution substation is the connection point of a distribution system to a transmission or a sub-transmission network. Outgoing feeders from a



## Distribution Transformer

Faults include overcurrent, overvoltage, a rise in the core of the transformer, and a surge or fall in the oil level. The proposed system is an IoT-based distribution transformer health monitoring system, which

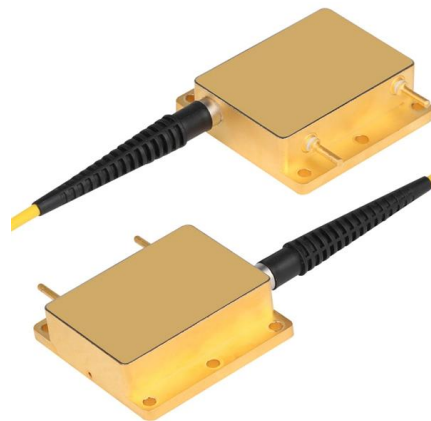


## Modeling of Distribution Transformer for Analysis of Core Losses of

The core losses of the transformer are mainly dependent on the material of the transformer core. The material of the transformer core just not minimize the cost.

## Power Transformer Fundamentals: Design and Manufacturing

The core and coil assembly and other internal components should be supported by permanent bracing to the interior of the tank. Temporary transportation braces for the core and coil should not generally



## Distribution transformer guide: Installation,

Distribution transformer service of installation, commissioning and maintenance that ensures reliable operation. Follow proper procedures for bushings, conservator,



## Transformer

The ideal transformer model neglects many basic linear aspects of real transformers, including unavoidable losses and inefficiencies. (a) Core losses, collectively



## Power Transformer Construction - The Core

Power Transformer Construction - Core (on photo transformer cores showing silicon steel top; by Megawatt) The core, which provides the magnetic

## (PDF) Transformer Core Materials Selection by Flux

Researchers have developed better transformer cores and core modeling methodologies in response to the requirement for improved electrical





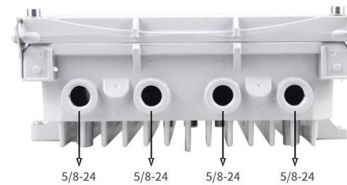
## Distribution Transformers: Principles Types, and more , TTES

Learn about the different types, parts, and working principles of distribution transformers used for lower voltage



## (PDF) Transformer Core Materials Selection by Flux

This study ranks a distribution transformer's core material according to the compactness of the flux line distribution inside the core using flux pattern



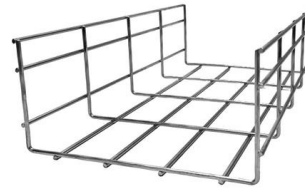
## Design of power transformers : Core

Insulating core from clamping system we assure that there is no circulating currents between them. Circulating currents and weak contact can generate local hot spots and gassing.



## Magnetic Flux Distributions in Transformer Core Joints

An electromagnetic analysis with FEM was realized to determine the magnetic flux distribution and to compute losses in lamination steel. The analysis of transformer core model in three-dimensional (3D)

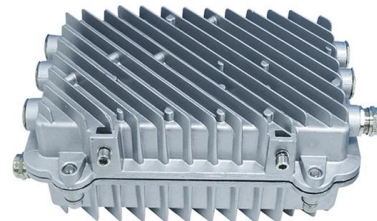


### **A new approach of core structure model for 3-phase distribution**

This study proposed a new T-joint configuration for the core of the 3-phase transformer. The proposed model was built after considering the variation of load and thermal profiles. Results

### **ITPro Today, Network Computing, IoT World Today combine**

ITPro Today, Network Computing and IoT World Today have combined with TechTarget . The page you are looking for may no longer exist.



### **A new approach of core structure model for 3-phase distribution transformer**

Furthermore, the total losses, the hot spot temperature of the core, and the oil temperature decreased significantly. The proposed model contributes to the literature on new T-joint





## What Is a Distribution Transformer? Structure, Function,

What Is a Distribution Transformer? Have you ever noticed those barrel-shaped devices mounted on poles or in green boxes near your neighborhood? These are



## Power Transformer Box: A Comprehensive Guide for

Power transformer boxes are protective enclosures that house the core components of a transformer. They provide insulation, cooling, and protection from

## Magnetic flux distributions in transformer core joints

This paper presents results of a rigorous analytical study performed in order to understand the role which joints play in determining the performance of cores of power and distribution transformers. The



## Modeling Transformer Core Effects in OpenDSS

For modeling a 2-winding transformer on a 3-legged core with this approach, you would define a 3-winding transformer and estimate values for the XHT and XLT



## Guide to Transformer Cores: Types, Construction,

Learn all about transformer core types, how they are constructed, and what they do. This article will explore the most common core styles used in



## ecore\_transformer.fm

Including the effect of a nonlinear B-H curve in the soft-iron core, the model computes the spatial distribution of the magnetic and electric fields, the magnetic saturation effect, the transient response,

## Contact Us

---

For datasheets, pricing, or custom telecom energy solutions, please visit:  
<https://koskolong.co.za>