



**Adam Tas Corridor Energy**

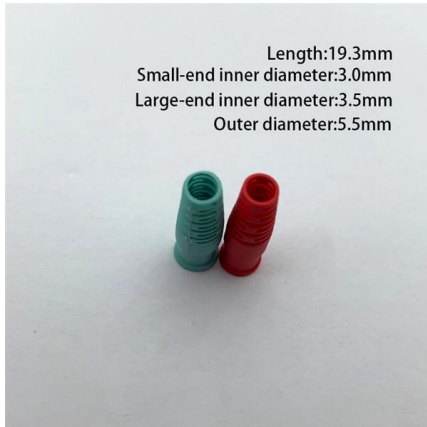
# **Trapezoidal Cable Tray for Sheathed Cables**





## Trapezoidal Cable Tray for Sheathed Cables

---



### Cable Trunking & Trays

Our range includes metallic (steel, aluminum, stainless steel) and non-metallic (PVC and FRP) trunking and trays, available in perforated, ladder, and solid designs.

### Types of Cable Trays - Purpose, Advantages,

Cable tray is alternatives to wire ways and electrical conduits, which completely enclose cables. Study types of cable trays, purpose, advantages.



### Types of Cable Trays: Ladder, Perforated, Basket, Solid

These trays ensure maximum airflow around the cables, promoting effective ventilation and heat dissipation to keep cable temperatures within safe

### What are the three types of cable trays?

Here are the three main types of cable trays: o 1. Trapezoidal Cable Tray: Trapezoidal cable trays



are characterized by their trapezoidal structure consisting of two side rails connected by a



## Cable Trays



Our profiles are compatible with all cable tray and cable ladder types, guaranteeing perfect alignment, stability, and load distribution. The system is suitable for both industrial and infrastructure

## Cable tray

In the electrical wiring of buildings, a cable tray system is used to support insulated electrical cables used for power distribution, control, and communication.



## A Comprehensive Guide to Tray Cable

Since cable trays do not fully enclose cables, which would be the case with cable raceway or ducts, tray cable must conform to strict requirements to



## Wire Mesh Cable Tray Solutions of PFLITSCH

Wire-tray Trunking - perfect for sensitive applications Avoids heat build-up The open, robust design of our Wire-tray Trunking does not simply allow easy insertion and removal of cables during laying or



## Cable tray

ABB designs and manufactures cable tray systems, including perforated tray, cable ladder, channel tray and strut (metal framing).



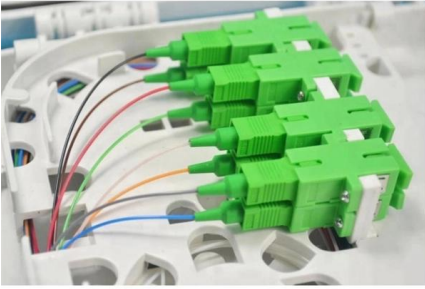
## 10 Things to Consider when Selecting a Cable Tray

Selecting a cable tray? Learn key factors like material, load capacity, and environment to choose the best cable management solution



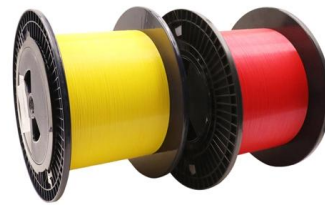
## How to Install Cable Tray: A Comprehensive Guide to Different Cable

Welcome to our step-by-step guide on installing cable trays! In this video, we'll explore the different types of cable trays available and provide detailed instructions for their installation.



## Wire Mesh Tray & Basket Cable Tray , EAE Electric

Ensure safe, organized, and efficient cable management with E-Line TLS Wire Mesh Cable Trays. Choose from stainless steel or electro-galvanized options--ideal for



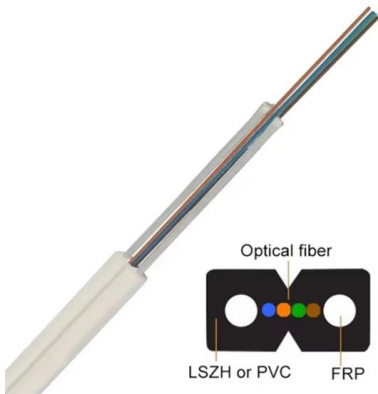
## CABLE TRAY INSTITUTE

Cable tray, introduced in the mid 1940s, is a safe and economical solution for supporting requirements of electric power, signal, control, instrumentation and

## Cable Trays

Cable Trays and Cable Management Systems A cable tray is an essential component in electrical systems, providing a structured pathway for safely routing





## Cable tray

So, whether specifying a major new project, or simply refurbishing existing facilities, choose ABB cable tray to deliver the most effective, reliable and long lasting

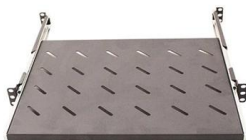
## Eurostrut Cable Trays , cable tray, cable route and

Cable trays for industrial and marine use. Includes distribution trays, cable routes and NATO-type models. Request a quote directly via our webshop.



## Control Cable

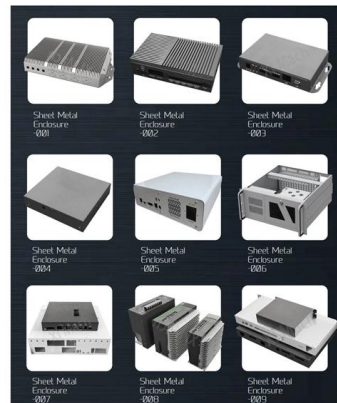
Control Cable Belden offers a wide selection of UL-rated 600V Tray Cables, as well as CSA Teck and ACIC Cables suitable for a variety of control applications



Webit Cabling

## Choosing Tray Cables: A Practical Guide to Types and Applications

When used indoors, tray cables must adhere to the NM-B (Non-Metallic Sheathed Cable - B) standards, which are designed for general-purpose residential wiring. This ensures that the cables are protected



## , IEWC

Discover the definition, applications, and benefits of tray cables in this comprehensive technical guide from IEWC.

## Cable Tray Technical Guide A practical guide to product selection and

**SOLID-BOTTOM CABLE TRAY** Providing additional cable protection, solid-bottom cable tray is sometimes preferred to support and protect numerous small instrumentation and control cables.



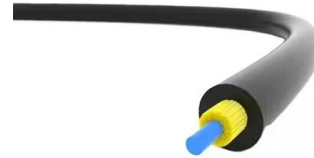
## Hot DIP Galvanized Trapezoidal Cable Tray, Stainless

Hot DIP Galvanized Trapezoidal Cable Tray, Stainless Steel Cable Ladder, Find Details and Price about Galvanized Cable Ladder Tray Cable Ladder Tray from



## **Cable Tray Technical Guide A practical guide to product selection and**

In designing supports for a cable tray system, consideration should be given to the loads associated with future cable additions and any additional loading that may be applied to the cable tray system (e.g.,



### **Trayco cable trays, cable ladders and mesh trays , Trayco**

Trayco is specialised in producing and optimising 100% Belgian cable trays, mesh trays, cable ladders, mounting and floor systems. We also play an important role

### **Cable Tray Types and Sizes**

One of the major perks of this tray type is its ease of installation--cables can be laid in or removed from the tray quickly, making it ideal for environments where



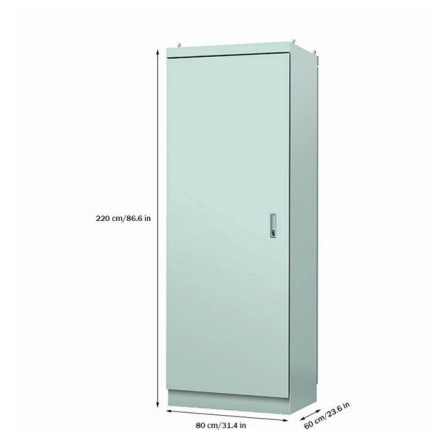
### **Cable Trays and Support Systems - Vashi Integrated**

At Vashi Integrated Solutions, we provide strong and reliable cable trays and support systems to help you manage wires and cables easily. Our trays are perfect for



## 7 Types of Cable Trays: How to Choose the Right One

A channel cable tray is a compact, single-piece tray system with a narrow base and raised side flanges. Unlike ladder or trough trays, channel trays



## Contact Us

---

For datasheets, pricing, or custom telecom energy solutions, please visit:  
<https://koskolong.co.za>