



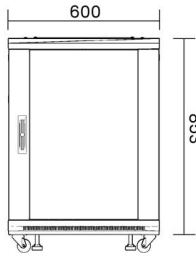
Adam Tas Corridor Energy

Upgraded Construction Plan for Integrated Container Racks





Upgraded Construction Plan for Integrated Container Racks

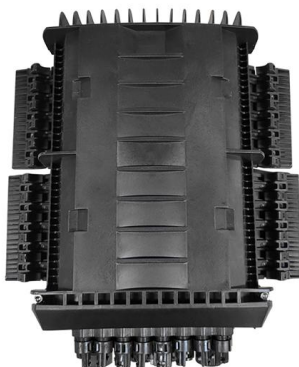


Smart container port development: recent technologies and research

Our work contributes to the understanding of the intelligent construction of container ports by providing a comprehensive overview of the research landscape. Based on our analysis, we

Port of Wilmington Reefer Racks

The first phase of supporting the new cargo handling equipment includes the construction of 14 new multi-level reefer



Shipping Container Garage Renovation Cost: DIY Conversion Guide

Shipping containers are engineered to withstand extreme weather conditions, making them a reliable choice for secure storage of vehicles and valuable equipment. Their robust steel construction means

Fully Integrated Rack Solutions

The best integrated racks consider requirements for network connectivity, physical and cyber security, optimized spacing and cooling, and



other necessities. Even the smallest details matter to attain the



Customizable & Scalable Modified Shipping Container Structures

Modified shipping container structures for industrial, energy, and construction sites. Custom offices, storage and workspaces. Deploy

Gartner Business Insights, Strategies & Trends For

Gain strategic business insights on cross-functional topics, and learn how to apply them to your function and role to drive stronger performance and innovation.



DESIGNING FUTURE-PROOF CONTAINER TERMINALS

Designing a container terminal - whether an existing site or new installation - is an exacting task that calls for complex decision making based on limited information and changing external conditions.





5-Level Bplarack Technical Solution for Crated Long Cargo Storage

5-level Bplarack technical solution for 7300 u00d7 2300 mm crated cargo, with 2500 kg per level, forklift drawer access, 260 mm spacing, and modular frame construction for container



Rack and Roll: Explaining the Surging Demand for Integrated Racks

Today's integrated racks are business assets and strategic investments that can be deployed and installed faster, minimize disruption to the data center, and deliver more consistent performance and

Microsoft Word

1) Layout Plan of Container Terminal Planned layout of the new container terminal at North Kalibaru phaselis shown in Figure 5.1.2-10 and Figure 5.1.2-11, which consists of construction of 1,200m



The Comprehensive Planning Guide for Industrial Steel

A comprehensive maintenance plan should include routine inspections, cleaning, and repairs. Conducting routine inspections is crucial as it allows for early



Research on Integrated Design of Modular Steel Structure

Modular container buildings, as new modular steel structure buildings with the advantages of modular construction and transportation, fast construction speed, and conformance to the concept of



Optimize Your Shipping With Container Floor Plans

Floor plans can incorporate the integration of specialized equipment, such as racks, hoists, and conveyors, to optimize the storage and handling of specific cargo types. For example, a

What Architects & Engineers Must Know About Shipping Container Design

Crucial insights for architects and engineers on shipping container design, including structural integrity, modular building



Reefer stack construction - NGICT

NGICT NEW GENERATION INTEGRATED CONTAINER TERMINALS Reefer stack construction Gangway and stairs mounted in the support structure for optimal



Container Racking & Shelving (Bespoke) , Modul-System

Modul-System's container solutions combine our racking systems with various types of containers to suit your specific requirements. In addition to the racking system, our complete turnkey solutions are



How to Build a Shipping Container Home: A Complete Guide

Get the full guide to building a shipping container home -- cost-smart planning, real container prices, and sale-ready units to get

Innovations in Container Design for Enhanced Durability

Modification and Adaptation: Architects and engineers must understand the considerations and challenges of designing and constructing





Research on Integrated Design of Modular Steel



1075KWHH ESS

In this study, for resolving this problem, it was proposed to coordinate the modular sequence of the construction and container manufacturing, establish

Rack Supported Buildings And Automation: Key Design

Learn more about the key factors that a rack engineer must account for when designing rack supported buildings used with automation.



Rack and Roll: Explaining the Surging Demand for Integrated Racks

Deploying integrated racks accelerates the process in several ways. The system integrator building the integrated rack typically has ready access to all of the equipment - from rack to server to cables -

Modular Reefer Rack Solutions Overview , PDF

The document discusses Voortman Steel Construction, a specialist in reefer rack solutions for container terminals. It provides details on their products including





Integrated planning model for two-story container ports

This paper conducts an exploratory study of this two-story container port and proposes an integrated optimization model to determine a long-term baseline plan from a tactical perspective for



Storage Racks (B-08-09)_2025doc

A scaled, complete floor plan with dimensions showing layout and type of storage racks, aisle widths and existing elements shall be provided. Detail and specify seismic anchorage to be used. Detail anchor

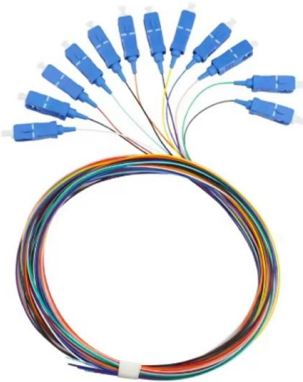
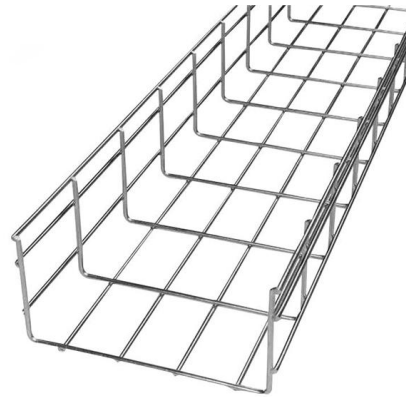


How It Works -- Integrated Container Solutions

Start with one of our many off-the-shelf container systems designed to meet a variety of logistics, power, and general infrastructure needs for any mission including factory augmentation, large scale

Modular Reefer Rack Solutions Overview , PDF

It provides details on their products including modular reefer racks, reefer safety tunnels, and high-mast lighting. It also describes their services such as project

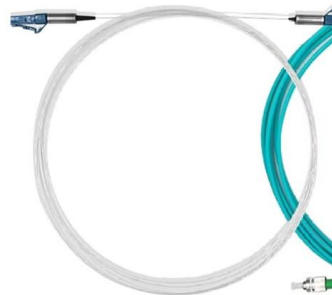


Uzu With CPF Upgrade

The Construction constraints will be integrated at early stage of the detailed design phase in order to validate delivery dates of Drawings and Equipment as well as

Integrated scheduling of gantry cranes, container trucks and yard

On-dock railway operation areas at sea-rail container ports play a crucial role in transferring containers between maritime and rail transportation systems. The operational efficiency of these areas depends



Contact Us

For datasheets, pricing, or custom telecom energy solutions, please visit:
<https://koskolong.co.za>