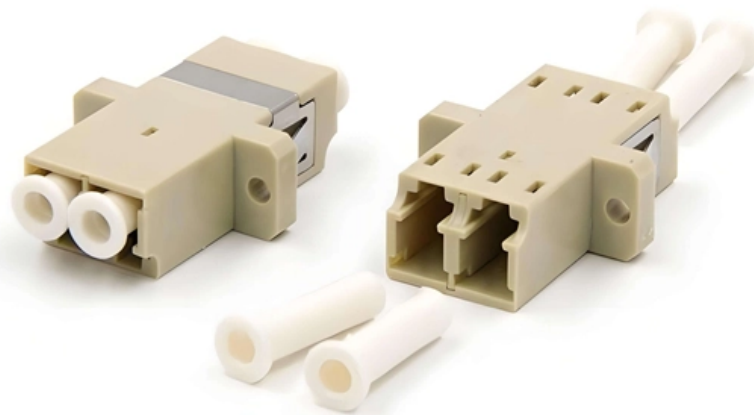




Adam Tas Corridor Energy

Uruguay Wall-Mounted Distribution Box Specifications





Uruguay Wall-Mounted Distribution Box Specifications

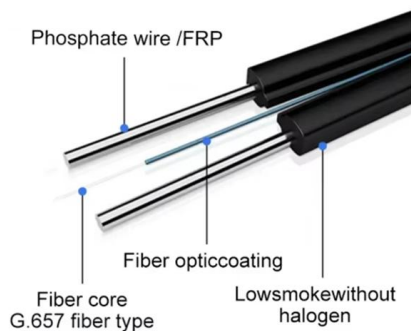


The installation requirements for the distribution box

Learn how to install a distribution box safely and correctly. Covers wiring, placement, standards, and expert tips for a compliant setup.

SHXC Series Wall Mount Electric Distribution Box

Easy to install and maintain: wall-mounted design with transparent cover for easy observation and maintenance of internal electrical components. Electrical



ABC Service Box

Pole or wall mounted distribution boxes for aerial bundled conductors, open wire conductor overhead line distribution systems or underground supply cables. Note: The equipment described in this data

Wall Mounted Distribution Box

Distribution Box Wall Mounted - Solid Rubber & DELTA SOLID RUBBER INFORMATION Our solid rubber distributor housings are made from a



Elitco

Deira Showroom Sharjah Showroom Overview Specifications Reviews Highlights PCE Wall Mounted Distribution Box Solid Rubber IP54, Dimensions: 350 x 210 x 150mm. 1 Year Warranty.



Distribution Box

Plastic Electrical Box, also known as a consumer control unit or electricity control



Distribution Boards

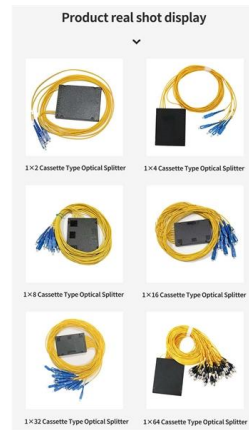
Easy Installation of outgoing The design of the pan assembly facilitates the installation of outgoing devices. Availability of mixing Mixing two different types of outgoing devices can be provided in





Technical Specifications for Outdoor LT Distribution boxes with

Scope: The scope of this specification covers Weather / Vermin proof LT distribution boxes (LTD) with controllers, MCCB, MCB, Bus bars, Contactors, CT's, Energy Meter, LT gas filled fixed capacitor, DC



inside

While the whole nation has been following pole mounted transformers and overhead distribution, CPWD for last 50 years has been distributing power through indoor substations and underground cabling



Requirements And Specifications For Installation Of

In flammable and explosive environments, explosion-proof distribution boxes should be selected and explosion-proof treatment should be carried out.

Distribution Box Guide: Types, Components & Solutions

Understand distribution boxes (DB boxes) in 5 minutes. Learn about types, components, functions, and uses. Find the perfect DB box for your needs.



FWB Fiber Distribution Box Wall-Mounted Type-AOA Tech

FWB series Fiber Distribution Box Wall-Mounted Type, also called ODF wall-mounted distribution cabinet, is available for small capacity communication



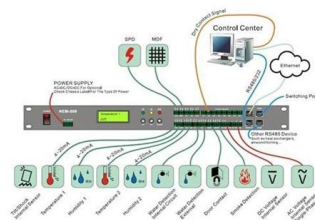
Wall Mounted Distributors

Wall Mounted Distributors are Power Distribution Units (PDU/ Distros) with quick and simple installation that saves time. Customized solutions available.



DISTRIBUTION BOARDS CATALOG

Load Center Design Design Features
Performance Features Safety Features Load
Center Specifications Box Wrapper Specifications
Ease of Installation Features BAHRA MCB as per
IEC Standard



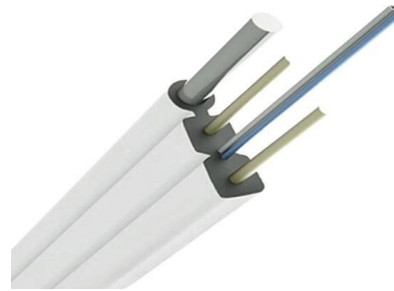


Metal electrical distribution box with IP65 protection for

Wall mounted electrical distribution box. Metal cabinet-style design with door. IP65

ABC Service Box

ABC Service Box - Three Phase, 200A Rated
Overview Pole or wall mounted distribution boxes for aerial bundled conductors, open wire conductor overhead line distribution systems or underground



PRODUCT SPECIFICATIONS U/UTP 4-Pairs Cable, Category 5E

INTRODUCTION LUX's Indoor Wall Mount Distribution Boxes are designed for terminating, splicing and interconnecting up to 48 fiber optical cables with FC/SC/ST connectors, or a maximum of 96 fiber

Major types of electrical boxes Technical specifications

Technical specifications There are 10 major types of electrical boxes used in Canada. All these types of boxes serve specific purposes and are offered with various features / characteristics.



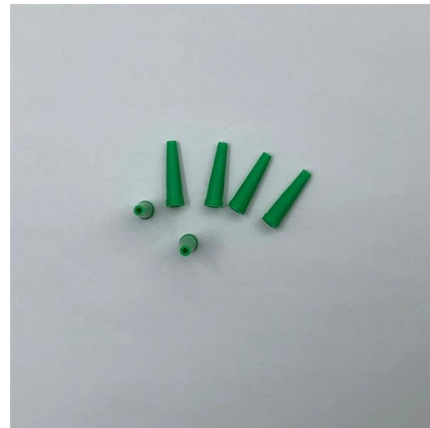
Metal electrical distribution box with IP65 protection for

Wall mounted electrical distribution box. Metal cabinet-style design with door. IP65 environmental protection, which allows the distribution box to be installed outside.



5 Way Circuit Breaker Box, IP65 Distribution Uruguay , Ubuy

This circuit breaker box boasts an IP65 rating, ensuring excellent protection against dust and water, making it ideal for both indoor and outdoor use.



Understanding Distribution Boxes: A Comprehensive Guide

Wall-mounted distribution boxes are widely used in residential, commercial, and light industrial installations. They are practical when floor space





Datasheet POR 48 Wall-mounted Optical Distribution Box

Wall mounted fiber optical box is designed for the placement of up to 48 optical connectors indoor. Optical cables can be lead in/out from upside or downsite. Adapters plate is selectable and splicing



Electrical Enclosures , Anixter Uruguay

Shop industrial boxes and enclosures designed for reliable performance in a range of extreme conditions. We carry enclosure solutions that are NEMA 1, 3/3R, 4, 4X, 12-Rated, and more.

Power Distribution Units - Tailored Solutions , INDU-ELECTRIC®

Our Power Distribution Units are ideal for both mobile and stationary applications - from film sets, events, and construction sites to demanding industrial projects.



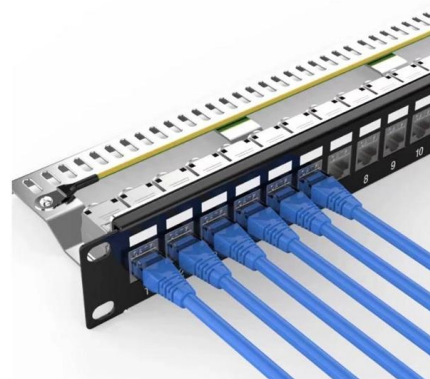
exclusive ADC KRONE DVD catalog

The LSA-PLUS wall-mounted distributor is a quick mounting rack which can accommodate up to 4 self-supporting back-mount frames. Depending on the purpose of the distributor, the back-mount frames



5 Way Circuit Breaker Box, IP65 Distribution Uruguay , Ubuy

Shop 5 Way Circuit Breaker Box, IP65 Distribution Protection Box with Din Rail Abs Plastic Breaker Box Cover Miniature Electrical Breaker Box Enclosure for Indoor Outdoor Wall online at a best price in



How to Choose the Right Wall-Mount Box for Compact

Discover how to select the perfect wall-mount box for machinery and control panels. Learn about footprint optimization, IP rating selection, and



A comprehensive understanding of distribution box

? Introduction Distribution boxes are at the heart of safe and organized electrical systems--whether in residential, commercial, or industrial settings. But





DRAFT SPECIFICATION FOR L. T. DISTRIBUTION BOX OF

DRAFT SPECIFICATION FOR L. T. DISTRIBUTION BOX OF DISTRIBUTION TRANSFORMER (DTR) OF DIFFERENT RATINGS WITH INCOMING PORCELAIN REWIREABLE FUSE UNIT AND

Contact Us

For datasheets, pricing, or custom telecom energy solutions, please visit:
<https://koskolong.co.za>