



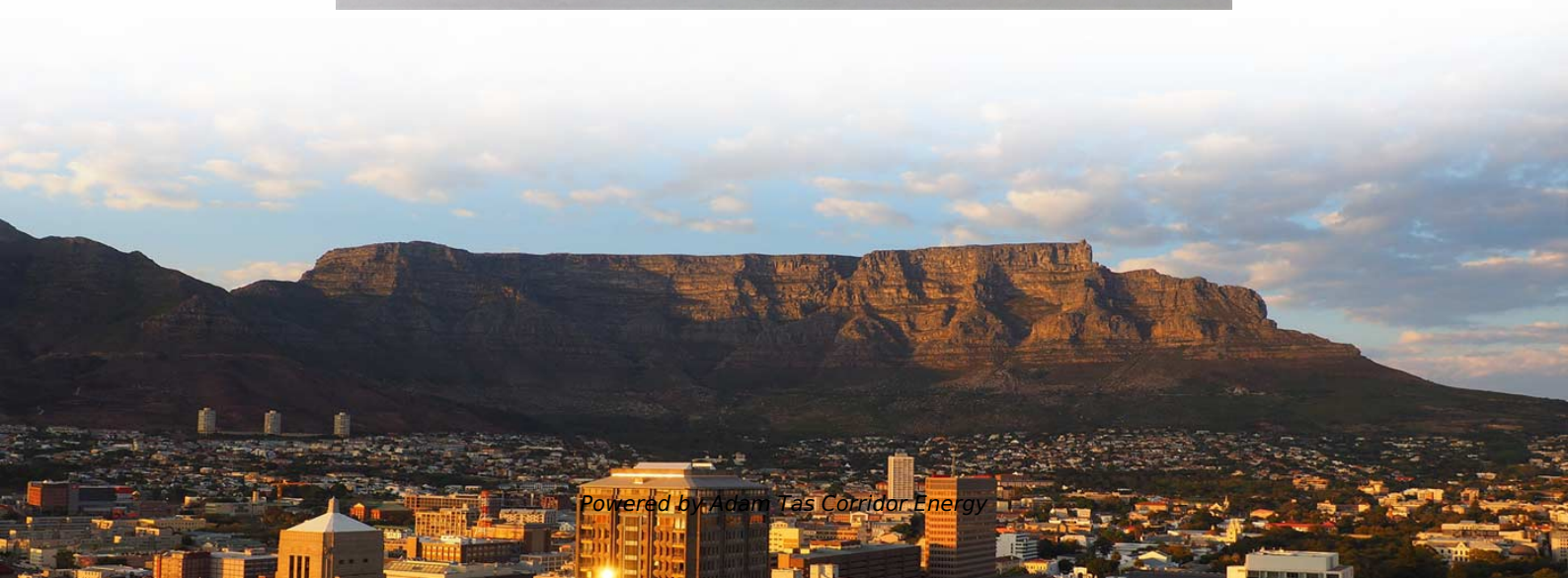
Adam Tas Corridor Energy

Vertical Installation of Elevator Cable Trays

Length:33.5mm

Small-end inner diameter:6.0mm

Large-end inner diameter:6.9mm





Overview

Thread hex nut 25 mm (1") to 50 mm (2") above location of the tray bottom. The Cable Tray ng standards, performance standards, test standards and application in this document have been tested extensively by a competent professional and are completely installed, without damage either to conductors or. Per the Canadian Electrical Code (CEC) a qualified person is one who is familiar with the construction of the apparatus and the hazards involved. Think of it as the "spinal cord" or the " elevator shaft " for your cabling infrastructure, providing a protected and structured pathway for cables to travel. Cable ladder systems and cable tray systems shall be manufactured in accordance with BS EN 61537, channel support. There are cable rack systems intended for vertical stacking of horizontal cable runs.



Vertical Installation of Elevator Cable Trays

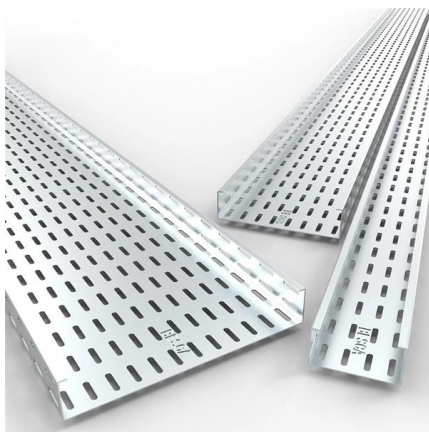
Vertical & Overhead Installation of Cable Trays and Wire Mesh

Discover whether wire mesh baskets and cable trays can be installed vertically or overhead. Practical tips and examples for smarter cable containment.



Instrumentation Cable trays Installation in vertical

The above issues can be minimized to a great extent if we can install the instrumentation cable trays in vertical orientation. Although a little bit higher

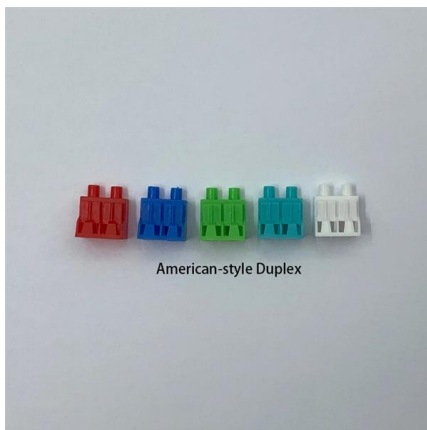


Vertical & Overhead Installation of Cable Trays and Wire Mesh

Yes, wire mesh baskets and cable trays can be installed vertically or overhead, and they absolutely should be in many cabling projects. Whether routing Cat 6 cables in a tight riser space or

Fiber Cable Tray System

Installation and maintenance of cable tray wiring systems should be performed by a minimum of two qualified technicians. For the purposes of this guideline, a qualified technician is one who is



Cable Tray Technical Guide A practical guide to product selection and

Cable Tray Technical Guide A practical guide to product selection and installation This guide for engineers and installers has been developed by ABB as a practical reference regarding cable tray

Cable Tray in High-Rise Buildings: Vertical Cable

Rack cable management (RCM) is a rack where all cables are arranged together. There are several types of cable management solutions -- horizontal cable



Cable tray install , Information by Electrical Professionals for

In general, vertical spacing for cable trays should be 30 cm (12 in), measured from the bottom of the upper tray to the top of the lower tray. A minimum clearance of 23 cm (9 in) should be





A Guide to Installing and Supporting Electrical Cable Trays

This guide covers the critical steps, from selecting the right electrical cable tray and performing accurate cable fill calculations to managing a safe cable pull through

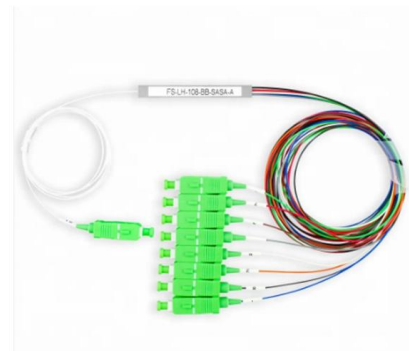


Best Practice Guide to Cable Ladder and Cable Tray Systems

This publication is intended as a practical guide for the proper and safe* installation of cable ladder systems, cable tray systems, channel support systems and associated supports.

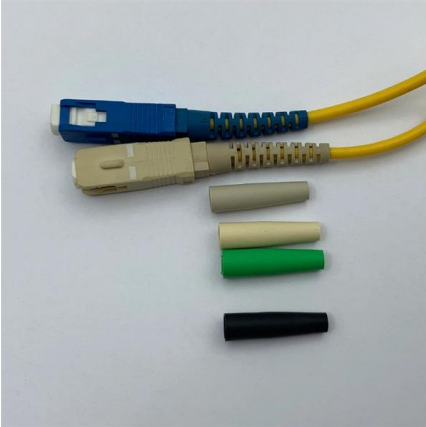
CABLE TRAY INSTALLATION PROCEDURE

5. Cable tray installation shall preferably be installed flat in buildings or operating structures. Tray shall run as far as possible under flooring and walkways. Only in



Installation Of Cable In Cable Trays: NEC, Safety

Installation of Cable in Cable Trays ensures proper routing, cable management, NEC compliance, grounding, fire safety, and load capacity.



GENERAL INFORMATION

In vertical installations, the weight of the suspended cable creates a tensile load on itself and is the factor, from a cable perspective, that limits the height of vertical installation for a tight buffer cable.



Cable Tray Spacing Standards for Installation and Safety

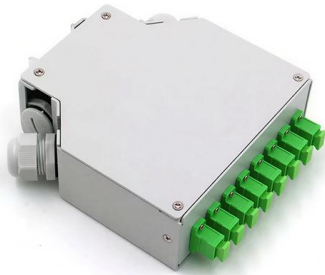
Key Factors Impacting Cable Tray Spacing
Understanding cable tray spacing is key to meeting safety regulations and maintaining system



How to Install Cable Tray: A Comprehensive Guide to Different Cable

Welcome to our step-by-step guide on installing cable trays! In this video, we'll explore the different types of cable trays available and provide detailed instructions for their installation.





Safely Installing, Maintaining and Inspecting Cable Trays

Cable trays support cables across open spans in the same way that roadway bridges support traffic. Cable trays can provide a safe component of a power, low voltage control, data or

Cable Tray Technical Guide A practical guide to product selection and

A practical guide to product selection and installation This guide for engineers and installers has been developed by ABB as a practical reference regarding cable tray characteristics, installation, and



What is a Vertical Cable Tray?

A Vertical Cable Tray is a specialized support system designed to carry electrical and data cables securely in a vertical or riser direction. Think of it

Cable Trays Installed Vertical In A Different Manner , Eng-Tips

Most of them tend to be some sort of vertical rail with hooks attached in which the cable hangs. This keeps the cables supported should the cable ties (still required) fail.



Method Statement installation of Cable Trays and Ladders

This method statement covers the site installation of the cable tray & ladders and the requirements of checks to be carried out.

Guide to cable support systems

Widths of 8 and 15 millimetres enable flexible adjustment to different cable trays, cable ladders and cable volumes. With the help of the matching SBV tightening strap locks and 576 spring chuck, the



Method Statement Title: Installation of Cable Trays and

4.1.4 Cable trays and ladders are stored horizontal position on flat surface with timber support at each meter and covered to protect from moisture and direct



910533-3_EN

Provision and installation of all cable trays, cable troughs and ladders, including the earthing of equipment, mounting, connection, attachment accessories and any special pieces for changes of



Contact Us

For datasheets, pricing, or custom telecom energy solutions, please visit:
<https://koskolong.co.za>