



**Adam Tas Corridor Energy**

# **Vertical T-junction on the lower right side of the cable tray**





## Vertical T-junction on the lower right side of the cable tray

---

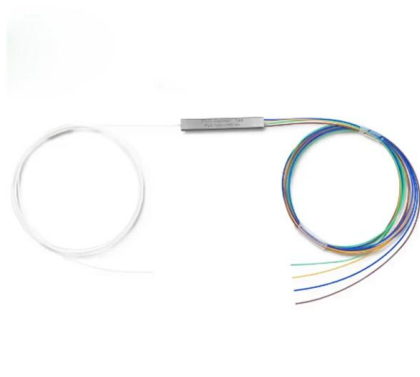
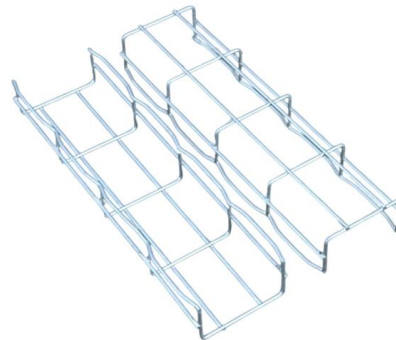


### Solved: Cable Tray connections vertical

The main cable tray backbone will be installed in the building's four-story shaft. From it, a dedicated floor cable tray will branch out at each level.

### CABLE TRAY, CABLE LADDER, CABLE TRUNKING CATALOGUE

Fitting and accessories, with the same or different width of the cable run. All fittings are available in sizes and types corresponding to the straight cable tray sections. These fittings include: elbow,



### GUIDE CABLE TRAYS TECHNICAL

It comes out of the furnace. For an approved configuration, the cables and cable trays see their mechanical properties definitely altered but they have fulfilled their purpose: to ensure the installation

### How to create vertical cable tray in Revit

How to create a vertical cable tray in Revit to match the one shown in the image: This can be



done with the free Revit MEP Fabrication extension. Use



### **Cable Tray Technical Guide A practical guide to product selection and**

A practical guide to product selection and installation This guide for engineers and installers has been developed by ABB as a practical reference regarding cable tray characteristics, installation, and

### **A Guide to Installing and Supporting Electrical Cable Trays**

A professional guide to installing electrical cable tray systems per NEC Article 392. Covers support, securing cables, and fill calculations.



### **Cable tray separation , Automation & Control Engineering Forum**

- > 1) standard separation distance between power and signal cable trays installed vertically.
- > > 2)Also what is the priority of installing power cable tray and signal cable tray? I mean



## Instrument Tray Layout

Cable Tray wiring systems are more common than conduit wiring systems because they are safer, more reliable, take up less space, and are



## Cable tray install , Information by Electrical Professionals for

The design calls for four 12" cable trays vertically stacked with a concrete wall on one side. The trays are 6" apart with the bottom tray being 5'-0" above the finished floor. All cables are #10 TC

GAIN AN IN - DEPTH UNDERSTANDING OF



- ① LED DISPLAY PANEL
- ② PROTECTOR OPERATION BUTTONS
- ③ NEUTRAL WIRE OUTPUT TERMINAL
- ④ LIVE WIRE OUTPUT TERMINAL
- ⑤ WORKING CURRENT AND VOLTAGE INSTRUCTIONS
- ⑥ FLAME - RETARDANT SHELL

## Instrumentation Cable trays Installation in vertical

The article describes a improvement for better life and easy maintenance for instrumentation cable trays for industry. The practices if applied



## LEGRAND CABLE TRAYS TECHNICAL GUIDE

Not all cable trays are equivalent. The mechanical and electrical characteristics, tests, certifications, overall quality management, recommendations mentioned in this technical guide only apply to our



## Guide to cable support systems

Universal systems for cable support structures are used for small loads. The systems are suspended from the ceiling with threaded rods, stand-off brackets allow raised floor mounting of cable trays,



## Cable tray manual

Nearly every aspect of cable tray design and installation has been explored for the use of the reader. If a topic has not been covered sufficiently to answer a specific question or if additional information is

## Mesh cable tray systems

1 4 Correct use The mesh cable tray systems support and route all types of cables. Depending on the type and version of mesh cable tray, as well as the corrosion protection used, the mesh cable tray

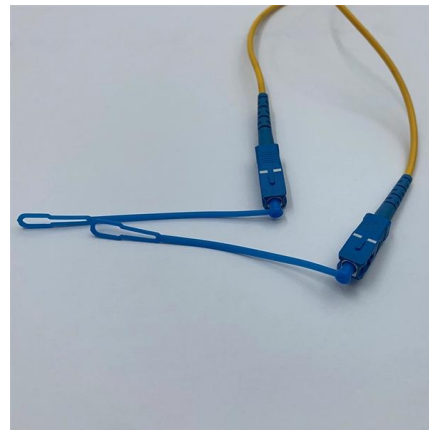


### **Best practice guide to cable ladder and cable tray**

Cable ladder and cable tray systems The following recommendations are intended to be a practical guide to ensure the safe and proper installation of

### **CABLE TRAY SYSTEMS GUIDE**

Some applications may require the cable tray to support the weight of a single, dead object in addition to the cable loads. Specifications typically require this to be applied at the midpoint of the span between



### **Cable Tray Questions , Cable Tray Institute**

That is, each cable tray rung would point in a vertical direction as opposed to the usual horizontal direction. The local electrical inspector has stated that he has no issues with this as long as the



## Cable Tray Technical Guide A practical guide to product selection and

In designing supports for a cable tray system, consideration should be given to the loads associated with future cable additions and any additional loading that may be applied to the cable tray system (e.g.,



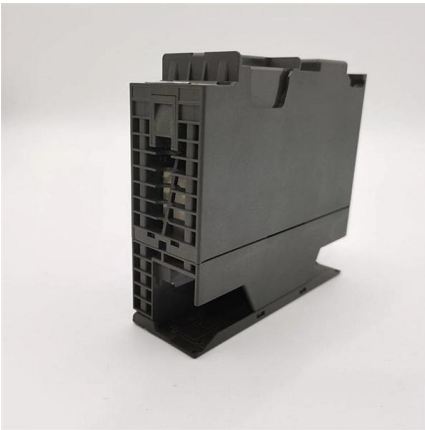
## Thermal Contraction and Expansion of Cable Tray

A cable tray support should be located within 2 feet of each side of the expansion joint splice plates position. The cable trays must not be clamped to each support so firmly that the cable tray cannot

## Method Statement installation of Cable Trays and Ladders

This method statement covers the site installation of the cable tray & ladders and the requirements of checks to be carried out.





### **Cable tray manual**

Instead of large conduits, cable channel may be used very effectively to support cable drops from the cable tray run to the equipment or device being serviced and is ideal for cable tray runs involving a

### **A Guide to Cable Tray Accessories and Their Functions**

Selecting the right cable tray accessories is crucial for the safety, stability, and ease of maintenance of any electrical system. This article provides a



### **Fiber Cable Tray System**

Installation and maintenance of cable tray wiring systems should be performed by a minimum of two qualified technicians. For the purposes of this guideline, a qualified technician is one who is familiar

### **Mastering Cable Tray Installation , Step-by-Step Guide for a Seamless**

Learn how to install cable trays correctly. Get the ultimate step-by-step guide on setting up a seamless and reliable cable management system.





## Cable Tray Spacing Standards for Installation and Safety

Key Factors Impacting Cable Tray Spacing  
Understanding cable tray spacing is key to meeting safety regulations and maintaining system



### GENERAL INFORMATION

As demonstrated in the previous paragraph, Optical Cable Corporation's cable can be installed in vertical rises for great distances. However, due to the practical nature of installing cable, the weight



### Guide to cable support systems

Fittings can, on the one hand, be used for horizontal or vertical changing of the routing direction or, on the other, to change the height or width of the dimension. Practical examples for this are horizontal or



## Contact Us

---

For datasheets, pricing, or custom telecom energy solutions, please visit:  
<https://koskolong.co.za>