



Adam Tas Corridor Energy

Vertical shaft cable trays and basement cable trays





Vertical shaft cable trays and basement cable trays

Cableizer

Installation considerations For cable pulling in vertical shafts, you have to consider the weight of the cable hanging in the shaft. You also have to consider the force



CABLE MANAGEMENT SYSTEMS CABLE TRAYS & ACCESSORIES

We manufacture a wide range of products capable of providing the characteristics which respond to the proposed application, along with quality of assembly, speed of installation, and cost-saving cable trays.



Eurostrut Cable Trays , cable tray, cable route and

Cable trays for industrial and marine use. Includes distribution trays, cable routes and NATO-type models. Request a quote directly via our webshop.



Cable Tray Technical Guide A practical guide to product selection and

Cable Tray Technical Guide A practical guide to



product selection and installation This guide for engineers and installers has been developed by ABB as a practical reference regarding cable tray



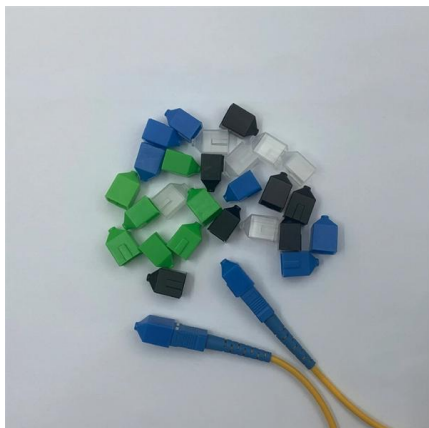
Complete cable tray manual for electrical engineers and

Complete cable tray manual for electrical engineers and designers (on photo: power cable management ladder tray systems assembled aluminum cable tray ladder



Cable Tray Types and Sizes

Explore various cable tray types and sizes for electrical installations. Learn about ladder, perforated, solid-bottom, wire mesh, and channel trays in this complete



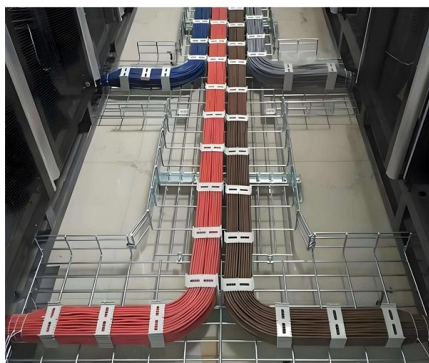
Vertical Shaft Cable Tray And Trunking

Vertical Shaft Cable Tray And Trunking Shandong Bolt Electrical Equipment Co., Ltd. will give you a detailed introduction to the content of Vertical Shaft Cable Tray



Cable management , Cable tray , Cable ladder rack , Eaton

With unmatched quality and service, we offer a variety of styles, materials and finishes available to support virtually any commercial and industrial cable

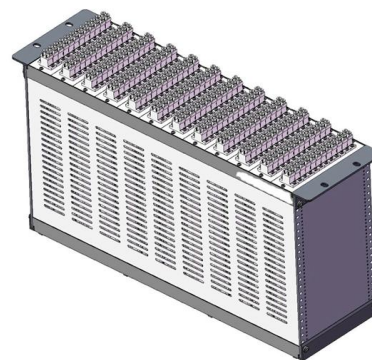


Cable Tray Trunking & Ladder Installation Method for

Resources For Electrical & Electronic Engineers
Cable Tray Trunking & Ladder Installation Method for Projects
The purpose of this article is to define the

GUIDE CABLE TRAYS TECHNICAL

The cable management system's electromagnetic performance characterises its ability to protect its cables from external electromagnetic disturbance; if this is controlled, the data carried by the cables



Cable Containment Systems , Trays, Baskets

Our range includes cable trays, basket trays, ladder racks, trunking, and galvanized conduits. Available in various sizes and finishes to suit all industrial and



INSTALLATION GUIDE

Vertical cable tray elbows at the top of runs should be supported at each end. At the bottom of runs, they should be supported at the top of the elbow and within 610 mm (24") of the lower extremity of the



Cable Tray Technical Guide A practical guide to product selection and

In designing supports for a cable tray system, consideration should be given to the loads associated with future cable additions and any additional loading that may be applied to the cable tray system (e.g.,

Types of Cable Trays - Purpose, Advantages,

Cable tray is alternatives to wire ways and electrical conduits, which completely enclose cables. Study types of cable trays, purpose, advantages.



Hallam Racks - Cable Trays

Hallam Racks' Vertical Cable Trays offer an easy vertical run of cable management up the whole height of the cabinet. Category: Cable Management Solutions.



Best practice guide to cable ladder and cable tray

Cable ladder and cable tray systems The following recommendations are intended to be a practical guide to ensure the safe and proper installation of



Difference Between Cable Tray and Cable Trench , Hutaib Electrical

Read about the differences between cable trays and cable trenches, their applications, benefits, and how Hutaib Electrical ensures top-tier cable management solutions. Find out which

Cable Tray Spacing Standards for Installation and Safety

Key Factors Impacting Cable Tray Spacing Understanding cable tray spacing is key to meeting safety regulations and maintaining system



A Guide to Installing and Supporting Electrical Cable Trays

A professional guide to installing electrical cable tray systems per NEC Article 392. Covers support, securing cables, and fill calculations.



CABLE TRAY SYSTEMS GUIDE

The total load supported by the cable tray, uniformly distributed. This will be the combined weight of all of the cables or tray contents, any environmental loads (snow, ice, dust) and any concentrated static



What is a Vertical Cable Tray?

What is a vertical cable tray? This guide explains its types (ladder, solid-bottom), benefits for safety & organization, and key applications in data

How to Install Cable Tray: A Comprehensive Guide to Different Cable

Welcome to our step-by-step guide on installing cable trays! In this video, we'll explore the different types of cable trays available and provide detailed instructions for their installation.



Instrumentation Cable trays Installation in vertical

The above issues can be minimized to a great extent if we can install the instrumentation cable trays in vertical orientation .Although a little bit higher



Cable Trays and Support Systems - Vashi Integrated

Cable Trays & Support Systems - Simple & Strong Cable Management At Vashi Integrated Solutions, we provide strong and reliable cable trays and support



Contact Us

For datasheets, pricing, or custom telecom energy solutions, please visit:
<https://koskolong.co.za>