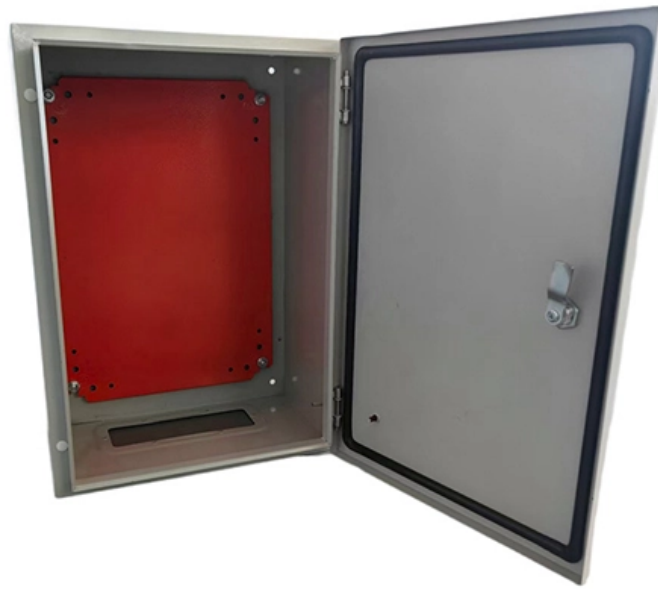




**Adam Tas Corridor Energy**

# **Vertical shaft cables are fixed at the end of the cable tray**





## Vertical shaft cables are fixed at the end of the cable tray

---



### Guide to cable support systems

A cable support system consists of cable support lengths and system components, such as cable support fittings, support elements, mounting elements and system accessories. The cable support

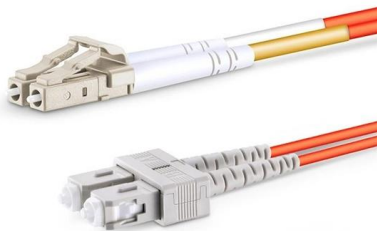
### CABLE TRAY INSTALLATION PROCEDURE

On vertical cable trays and on edgewise - horizontal cable trays, each cable shall be fixed with 20mm wide stainless steel strips (two per meter). On horizontal cable



### Cable Tray Installation and Cable Handling Method

Cable Tray Installation Method Statement 1. Cable Tray Installation Cable trays should be installed in accordance with the latest revision of the NEC, NEMA VE

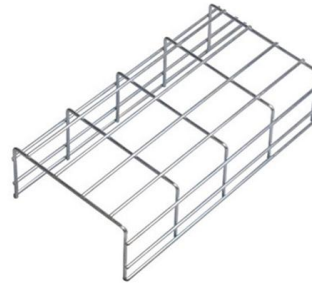


### Cable Tray Technical Guide A practical guide to product selection and

SOLID-BOTTOM CABLE TRAY Providing additional



cable protection, solid-bottom cable tray is sometimes preferred to support and protect numerous small instrumentation and control cables.



## Cable Tray Spacing Standards for Installation and Safety

Key Factors Impacting Cable Tray Spacing  
Understanding cable tray spacing is key to meeting safety regulations and maintaining system

## FAQ , Cable Tray Institute

The last two items can also be accomplished with a solid fixed barrier. The NEC in section 392.8 (B) indicates that in other than horizontal runs, cables shall be securely fastened to transverse



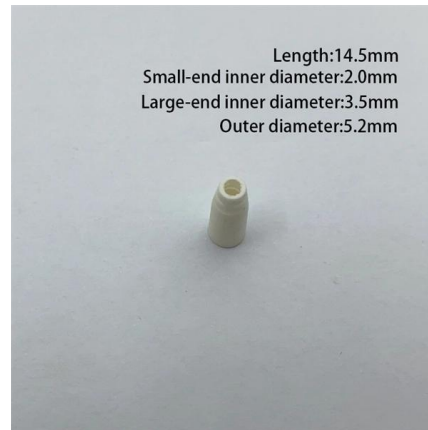
## Installation Of Cable In Cable Trays: NEC, Safety

Cable installed in tray is subject to many of the same considerations as cable being installed in conduit systems. Correctly calculated data and adherence to the



## Cable Tray Installation Method Statement

Below is the detailed cable tray installation method statement not only for cable tray but also applicable for GI ladder and trunking for indoor and outdoor applications

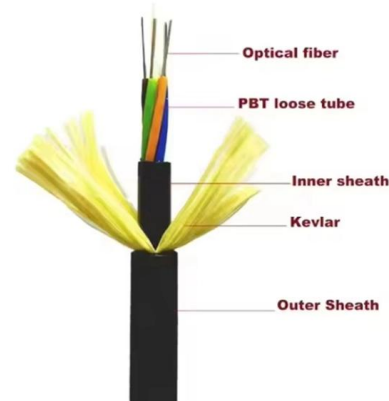


## IEC Standard for Cable Tray: Complete Technical Guide

It applies to cable trays made of steel, stainless steel, aluminum, or other metallic materials. The standard ensures these systems can handle the

## Supporting and securing cable runs in vertical tray

NEC Table 300.19(A) proposes spacings for conductor supports. How can we design and install the cable supports in vertical runs? Vertical runs pass through the elevations. if we apply



## How to Install Cable Tray: A Comprehensive Guide to Different Cable

Welcome to our step-by-step guide on installing cable trays! In this video, we'll explore the different types of cable trays available and provide detailed instructions for their installation.



### **Cable Tray Trunking & Ladder Installation Method for**

Cable tray and trunking will be installed with enough space to permit access for installing cables. Containment trays will be properly aligned and securely fixed at



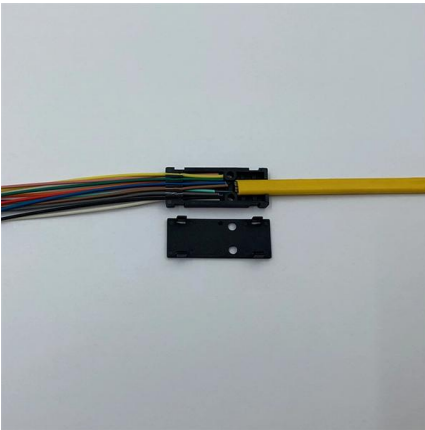
### **Vertical Straight Cable Tray Support Spacing , Eng-Tips**

" b) Vertically run cables shall be secured, as required, by support devices installed at intervals in the raceway systems. In vertical trays, cables shall also be secured at intermediate

### **Beama Best Practice Guide , Installation Of The System , Cable**

2.2 Structural characteristics When considering the installation of the cable supports system it is imperative to avoid the cutting or drilling of structural building members without the approval of the





## Method for laying cable in vertical shaft

The application discloses a method for laying cables in a vertical shaft, and belongs to the technical field of cable laying methods.

### 910533-3\_EN

Cable support systems are generally designed with at least 50 % reserve space available for each tray. Cable tray types, supports (types and spacing) and securing systems are selected and designed



## Cableizer

Cable pulling in vertical shafts is very dangerous and we strongly advise you to get professional help from an installation company with references in similar projects.

## Vertical Straight Cable Tray Support Spacing , Eng-Tips

In vertical trays, cables shall also be secured at intermediate locations as necessary to keep all cables completely within and secured to the tray." So, it is no indication what could be the



### Cable installation in vertical shaft

A theory has been then developed both for cables installed in a straight rigid vertical configuration and for cables installed in a flexible/snaked vertical configuration. The paper provides a presentation of



### What is a Vertical Cable Tray?

A Vertical Cable Tray is a specialized support system designed to carry electrical and data cables securely in a vertical or riser direction. Think of it



### GENERAL INFORMATION

Cable trays or raceways often provide a convenient, safe and efficient method of fiber optic cable installation. Trays can be installed in ceilings, below floors and in riser shafts. When installing fiber



## A Guide to Installing and Supporting Electrical Cable Trays

A professional guide to installing electrical cable tray systems per NEC Article 392. Covers support, securing cables, and fill calculations.



## Typical Design Philosophy of Cable Trays for Power

Cable tray system shall be used for laying of MV and LV power, control, instrumentation and special cables in the Power Plant. Cable trays shall be

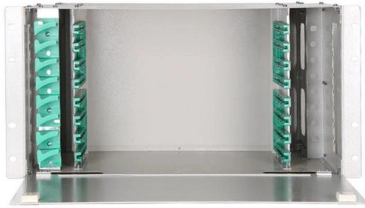
## Verticals Cable Tray Management Solutions , Cable

Hutaib Electricals, a trusted cable tray manufacturer in India, offers vertical cable management solutions for high-rise buildings. Their basket cable trays and wire



## Cable Tray Technical Guide A practical guide to product selection and

Cable tray installed in a hazardous location must contain only those cables that are appropriate for this type of environment as defined in Chapter 5 of the NEC.



## Vertical Cable Ladders

If installation directly on the solid wall is not possible due to structural conditions, vertical cable routing can also be implemented in a suspended position using the



## Cable Tray Manual: NEC Article 392 Guide

Standard Aluminum Ladder o The rungs provide a convenient anchor for tying down cables in vertical runs or where the positions of the cables must be maintained in

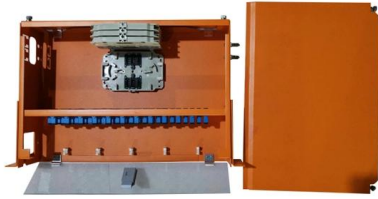
## Method Statement installation of Cable Trays and Ladders

This method statement covers the site installation of the cable tray & ladders and the requirements of checks to be carried out.





## **Best Practice Guide to Cable Ladder and Cable Tray Systems**



Cables should be fastened to the cable ladder and/or cable tray using cable cleats or cable ties to prevent movement of the cables under normal use and during fault conditions (Figures 25a and 25b).

## **Contact Us**

---

For datasheets, pricing, or custom telecom energy solutions, please visit:  
<https://koskolong.co.za>