



Adam Tas Corridor Energy

Voltage at the photovoltaic combiner box terminal





Voltage at the photovoltaic combiner box terminal



Electrical Parameters to Consider When Designing a Combiner Box

In photovoltaic (PV) power generation systems, the design of the combiner box is one of the key aspects. Its function is to aggregate the direct current (DC) from multiple PV strings and transmit it to

How To Wire A Solar Combiner Box Or Pass-Through

Learn how to wire a solar combiner box or pass-through box safely and efficiently. Simplify solar panel connections and optimize system performance with this guide.



A Comprehensive Guide to Combiner Boxes in

The combiner box is equipped with input terminals connected to the DC output of the individual solar panels. These terminals are designed to accommodate the



What Is a Combiner Box as Used in PV Systems?

oParallel connection: Inside the solar Combiner Box, these input terminals are usually connected

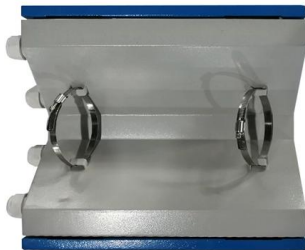


in parallel, which means that the voltage of each



Photovoltaic AC combiner box detailed explanation

For a huge photovoltaic power station, the amount of the combiner box only accounts for 1%, but 100% of the current passes through it. During commissioning,



Understanding PV Combiner Boxes: Design, Function,

A complete guide to PV combiner boxes, covering structure, safety protection, monitoring, IP ratings, selection principles, and future smart trends.



Everything You Need to Know About PV Combiner Box

Learn everything about PV Combiner Boxes--how they work, key components, installation tips, and FAQs to optimize your solar power system





APPLICATION NOTE DC COMBINER BOX IN PHOTOVOLTAIC

REMOTE OPERATION IN DC COMBINER BOXES efficiency, reliability and safety in solar energy systems. They enable centralized management in large-scale and remote installation Large



Electrical Parameters to Consider When Designing a Combiner Box

The rated voltage of the combiner box determines the maximum voltage it can safely handle. The voltage in a PV system is primarily determined by the series-connected PV modules.

PV Combiner Boxes: Organizing Solar Connections

PV Combiner Boxes: Organizing Solar Connections PV combiner boxes play a crucial role in solar installations, efficiently organizing and protecting the



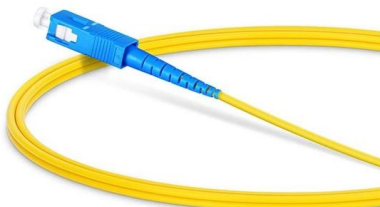
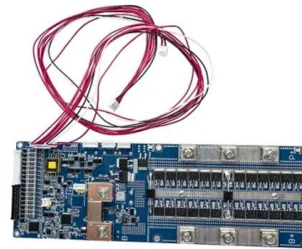
What Is a Combiner Box as Used in PV Systems?

The following is the workflow of the solar Combiner Box: (1)Connecting components: 12 PV modules are connected to the 12 input



A Comprehensive Guide to Wiring Diagrams for PV

Learn how to correctly wire a PV combiner box with a comprehensive wiring diagram. Understand the connections and components needed for a safe and efficient

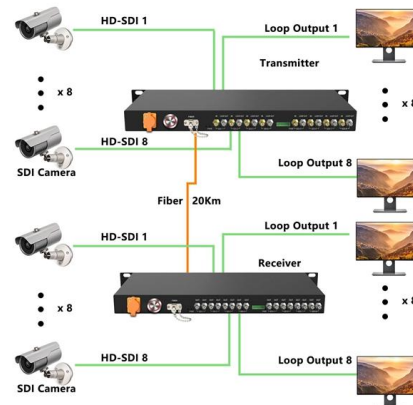


Understanding the Function of a Combiner Box in Solar Photovoltaic

Photovoltaic strings are connected in series or parallel configurations to generate the desired voltage and current levels. The combiner box consolidates these strings, streamlining the

How to Wire a PV Combiner Box

PV combiner box connects solar strings via fuses, breakers, surge protection, and grounding, and routes the combined output to the inverter.



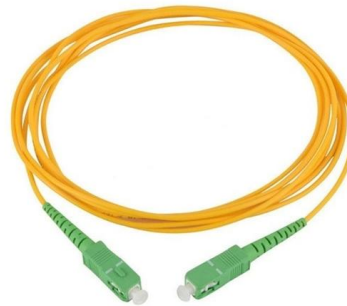


How to Connect Solar Panel to Combiner Box

Connecting solar panels to a combiner box involves running DC wiring from each panel's output to dedicated input terminals in the combiner box, where

Solar Combiner Box Wiring Diagram and Installation

Learn how to safely install and wire a solar combiner box for DC PV systems. Step-by-step guide covers wiring, grounding, surge protection (SPD),



The Ultimate Guide to Solar Combiner Boxes: From Basics to

Choose a combiner box with a voltage rating that matches or exceeds the maximum voltage of your solar power system. This is critical for ensuring safe operation and preventing

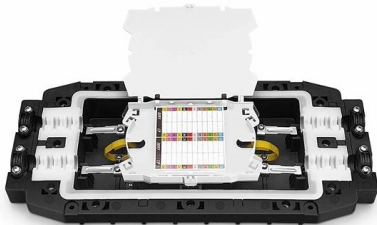
Solar Combiner Box: Complete DC & PV Guide (2026)

Each solar string generates DC current at the string voltage (typically 200-1500V depending on system design). The combiner box collects the DC+



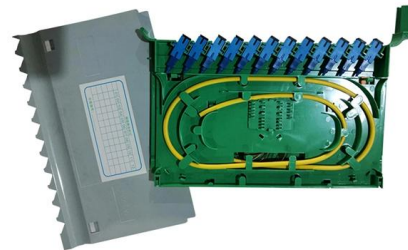
Understanding PV Combiner Boxes: Design, Function,

This guide explains how combiner boxes work, how they have evolved, how to select the right model, and what future trends will shape the next



What is a Combiner Box as Used in PV System: A

A combiner box in a PV system connects multiple solar panel strings, streamlining wiring, improving safety, and sending DC power to the inverter.



Comprehensive Guide to PV Combiner Box Installation

Positive and Negative Input Wiring: Loosen the waterproof terminal nuts at the bottom of the combiner box. Thread positive strings through white





What Does a Solar Combiner Box Do? Complete PV

Learn what a solar combiner box does, when you need one, and how it simplifies wiring while enhancing safety in solar installations. Complete guide



APPLICATION NOTE DC COMBINER BOX IN PHOTOVOLTAIC

External DC combiner boxes are used with central inverters in large-scale solar farms to consolidate thousands of strings and with single-mppt string inverters which can be managed as

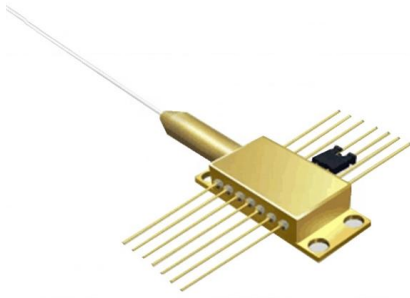
Solar Combiner Boxes and Voltage Changes: What to Know

You should always pick a solar combiner box with a voltage rating higher than your system's highest voltage. This keeps your system safe and helps it last longer.



PV Combiner Box, Solar Isolator & DC Disconnect

Typical system voltages are 600-1500 Vdc. Utility sites often run 1500 Vdc to reduce losses. Commercial rooftops commonly run 1000-1500 Vdc. These



Contact Us

For datasheets, pricing, or custom telecom energy solutions, please visit:
<https://koskolong.co.za>