



Adam Tas Corridor Energy

Wavelengths separated by the beam splitter



2. Imported design is convenient for expansion.

The design of two inlets saves space and allows for rear line entry.





Overview

In its most common form, a cube, a beam splitter is made from two triangular glass which are glued together at their base using polyester,, or urethane-based adhesives. There are various products available, such as beam combiners for specific laser wavelengths, and hot mirrors and cold mirrors with a broad-band design that separate visible light and infrared light. What are beamsplitters and how are they used in optics and photonics applications ?

Beamsplitters are optical components that are used to. When you need to separate or overlap two beams on the optical bench or in a product design, the solution is most often the humble but elegant beamsplitter.



Wavelengths separated by the beam splitter



Transmission and Reflection by Beamsplitters

Transmission and Reflection by Beamsplitters - Java Tutorial A beamsplitter is a common optical component that partially transmits and partially reflects an

Fiber Optic Splitter: How It Works & Types Guide

This guide demystifies fiber optic splitters, explaining their design, operating principles, types, key specifications, and real-world applications.



Beamsplitters

Beam Splitter Gratings Multiple beamsplitters, also known as array illuminators, are gratings with sophisticated periodic structure that are capable of transforming an incident plane wave into a set of

How Beam Splitters Work

Beam splitters are optical devices that divide a beam of light into two separate beams. When light enters a beam splitter, it is either reflected



or transmitted,



Beamsplitters: Divide, combine & conquer

The first class of beamsplitters we'll discuss can be used to split the power of a light beam into two separate paths. This is common in interferometry, imaging, and for

An Introduction to beam splitter

Dichroic beam splitters separate incident light into different wavelength bands. There are various products available, such as beam combiners for specific laser



Covering the Basics of Beamsplitters -- Firebird Optics

Polarizing Beamsplitter While standard non-polarizing beamsplitters divide light by wavelength, a polarizing beamsplitter will split the incident beam



Beamsplitters: Combining/Separating Light Wavelengths

Beamsplitters are use a combination of refraction and reflection to alter the direction of the light beam, allowing various wavelengths to be redirected.

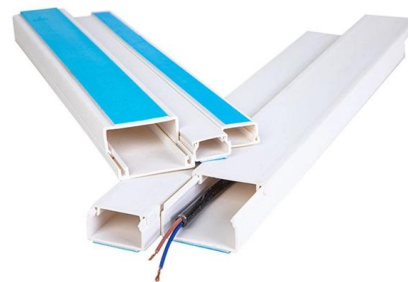


How a Spectrum Splitter Works: Diagram and Applications

Demystify the physics and engineering diagrams behind devices that precisely separate mixed energy wavelengths for critical applications.

What Are Optical Beamsplitters? , Plate, Cube & Dichroic Types

A dichroic beam splitter, or dichroic mirror, works as an optical filter that selects certain wavelengths and reflects the others. These are often employed at non-normal angles of incidence.



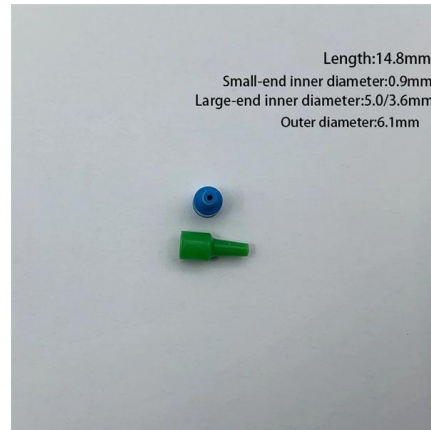
What are Beamsplitters?

Dichroic Beamsplitters split light by wavelength. Options range from laser beam combiners designed for specific laser wavelengths to broadband hot and cold



Beam Splitters: Types and Applications

Dichroic Beam Splitter: Dichroic beam splitters separate light based on wavelengths and are commonly used in applications involving fluorescence, tailored laser

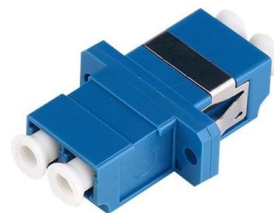


Beam Splitters: Explained

Beam splitters are a fundamental element in optical systems. Beam splitters are, in essence, optical components used to divide a single light source

Beamsplitters: Combining/Separating Light Wavelengths

Beamsplitters are optical devices that are designed to split or combine light of different wavelengths onto different paths. They use a



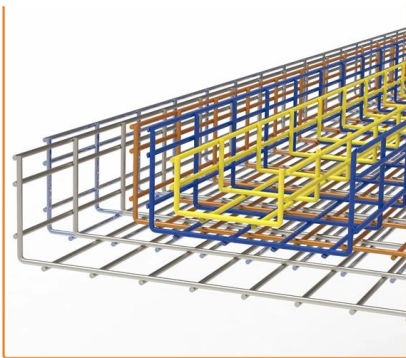


Beam Splitter

Within the interferometer, a beam-splitter directs one beam of light down a reference path, which has a number of optical elements including an ideally flat and smooth mirror from which the light is

What Are Optical Beam Splitters?

What is Beam Splitter? A beam splitter is any device that can guide light in two separate directions. The majority of these devices are constructed using glass



Beamsplitters: A Guide for Designers , Optics

Beamsplitter coatings are specialized optical coatings applied to glass or other substrates to split incident light into two or more separate beams, typically by

How Does a Beam Splitter Work in Optical Applications?

A beam splitter divides a light beam into two or more paths, crucial for optical devices like microscopes and interferometers.





Beam Splitting

Beam splitting is defined as the process of dividing an incident light beam into two or more separate beams, which can be achieved through various structures, including metasurfaces that utilize phase

Beam Splitters: Types, Applications, and Selection

Dichroic beam splitters work by reflecting light of certain wavelengths while transmitting others. They are commonly used in fluorescence microscopy,

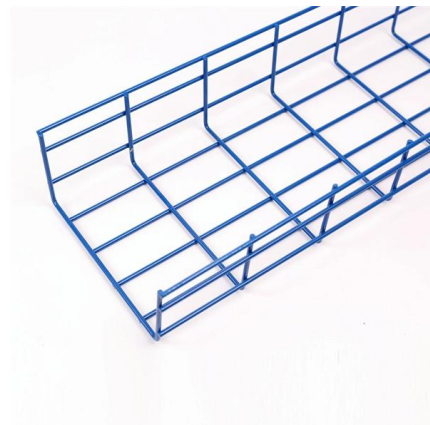


Introduction To Splitters , Teledyne Vision Solutions

Emission image splitters allow for a single camera to image at multiple wavelengths by splitting the camera sensor into sections and projecting emitted light onto each

Beam Splitters

DIAGNOSTIC BEAM SPLITTERS FOR PROCESS MONITORING Dichroic mirrors separate or combine two or more beams of different wavelengths in the desired





How Beamsplitters Work: Principles and Applications

The input beam is spatially separated into two orthogonally polarized beams, diverging at an angle determined by the prism geometry and the material's properties. Choosing the appropriate



Beamsplitters: Divide, combine & conquer

The beamsplitter acts to divide the light's intensity in a given ratio over a range of wavelengths, generating two beams with the same spectral composition, if not



Beamsplitter

Alternatively, a polarizing beamsplitter transmits two distinct orthogonally polarized beams that are angularly separated or displaced. In birefringent materials, the incident polarization is decomposed



Beam splitter

Overview Designs Phase shift Classical lossless beam splitter Use in experiments Quantum mechanical description Reflection beam splitters

In its most common form, a cube, a beam splitter is made from two triangular glass prisms which are glued together at their base using polyester, epoxy, or urethane-based adhesives. (Before



these synthetic resins, natural ones were used, e.g. Canada balsam.) The thickness of the resin layer is adjusted such that (for a certain wavelength) half of the light incident through one "port" (i.e., face of the cube) is reflected and th



Photonics 101

It is important to keep in mind that a beam splitter, regardless of the form be it cube or pipe, can be made to specifically suit the needs of the customer. This means that they can be made

All You Need to Know About Beam Splitters

Dichroic Beam Splitter: Dichroic beam splitters separate light according to wavelengths and are typically utilized in use cases that involve



Beam Splitters - optical power splitter, beamsplitter, thin

A beam splitter is an optical component used for splitting light into two separate beams, usually by wavelength or polarity. It can also be used, in reverse, as a



Infrared Spectroscopy: Beam Splitters and Detector Physics Explained

A beam splitter reflects some of the infrared light and lets the rest pass through. This creates two separate paths, which later overlap and interfere. This interference holds information



Contact Us

For datasheets, pricing, or custom telecom energy solutions, please visit:
<https://koskolong.co.za>