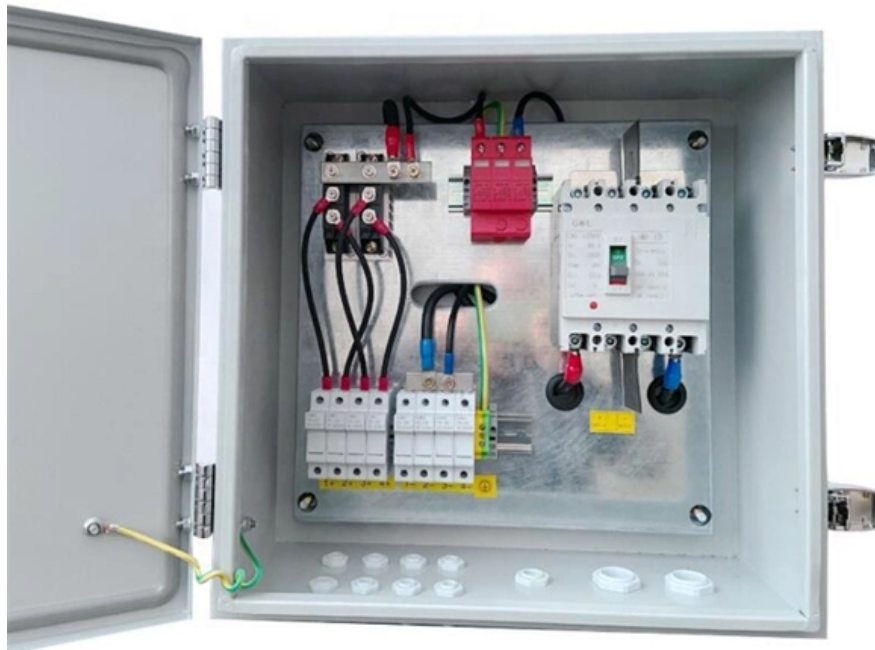




Adam Tas Corridor Energy

Weak current relay protection





Overview

Differential Relay: Compares currents at two points; operates when there is a difference (used in transformers and generators). We have three ways to tackle the rising protection challenges: fine-tune the present protective relays, enforce a better fault response of the sources, and use protection principles that are less dependent on the sources. Protective relays and devices have been developed over 100 years ago to provide "lastline" of defense for the electrical systems. They are intended to quickly identify a fault and isolate it so the balance of the system continue to run under normal conditions. Special Functions in Power Transmission Line Protection Second Function: Weak Infeed (Echo) Protection This function ensures fast and coordinated tripping of transmission lines during faults when one terminal contributes very little or no fault current, such as in the following cases: 1□ One.



Weak current relay protection



Protective Relays: Overcurrent and Safety Relays , TE

TE offers types of protective relays from overcurrent relays to safety relays that trips a circuit breaker when a fault is detected such as overcurrent, overvoltage, etc.

Basic protection relay knowledge

A fast and selective arc fault mitigation for air-insulated LV & MV switchgear and Relion protection and control relays and sensor technology protect staff and plant facilities for many years.



Protective Relaying Philosophy and Design Guidelines

However, for protection of the turbine, underfrequency relays are generally required unless the turbine manufacturer states that this protection is unnecessary.

A coordinated relay protection strategy of distribution network based

Combining with faults occurring at different



locations along the feeder line, the composition and basic working principle of the FCL are discussed, the theory of fast fault identification method



Introduction to Protective Relaying , Electric Power

Introduction to Protective Relaying What are Protective Relays, or Protection Relays? Protective relays are used in industrial power generation and supply

Performance Testing of Distance Protection under Weak in-feed

However, the problem is solved by the use of a distance protection scheme that utilises weak in-feed intertripping logic, this ensures the relay at the strong end can trip the breakers at both



Distribution Automation Handbook

The operating time of definite time relays does not depend on the magnitude of the fault current, while the operating time of inverse time relays is shorter the higher the fault current magnitude is. The time



Strategy and Practice of Power System Relay Protection under

Developing and applying intelligent relay protection systems has become an important way to improve the safety and reliability of power systems. This article explored the relay protection strategies and

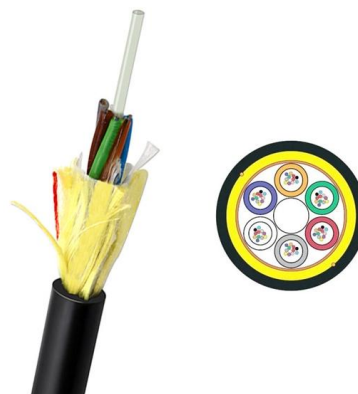


Please Explain the Principle of Weak InFeed Echo

Generator protection schemes can't use traditional inverse time overcurrent (51) protection because generators can't produce enough fault current to make them

Impact of 'intermediate' sources on distance protection

The impact of weak and strong infeed sources on the operating performance of relay is discussed in this paper. A smart relay algorithm with





Protective Relaying Principles and Applications

Protective Relaying Principles and Applications
The article provides an overview of protective relaying principles and their applications for high-voltage power system

Societal and technology trend report

The crisis of traditional relay protection: A disruption of the technological paradigm Using the high short-circuit currents and system inertia provided by synchronous generators, traditional relay protection



Improved Time-Domain Distance Protection for Two

A two-terminal weak feed (TTWF) AC system is often composed of 100% power electronic equipment. The traditional fault control strategy adopted



Permissive or Blocking Pilot Protection Schemes? How to Have It

Permissive or Blocking Pilot Protection Schemes?
How to Have It Both Ways Bogdan Kasztenny,
Mangapathirao V. Mynam, Normann Fischer, and
Armando Guzmán Schweitzer Engineering



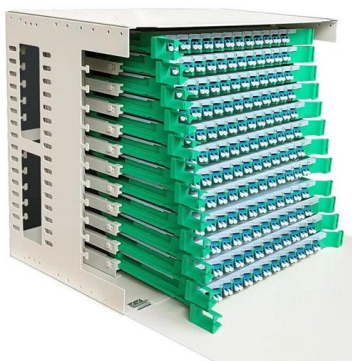
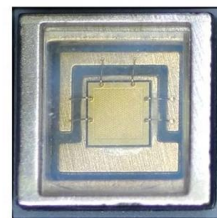
How Weak Infeed Protection Works in Power Transmission

When a fault occurs near the weak end, the relay at that side may fail to trip because the fault current is insufficient to activate the normal protection zones, or the breaker at that



System-based testing of distance protection relays

Switchgear System-based testing of distance protection relays Testing distance protection relays - safe, simple, quick. December 5, 2019 In order to



Welcome to Eastern Regional Power Committee ::

Welcome to Eastern Regional Power Committee ::



Simulation Analysis of Relay Protection Action and Weak Point

In order to improve the protection performance of relay protection devices in complex large-scale power grid, a simulation analysis method of relay protection action and weak point



Impact of 'intermediate' sources on distance protection of transmission

A smart relay algorithm with control based on phase-phase under voltage levels and a residual overvoltage level detector or a negative phase sequence current method is essential during

Societal and technology trend report

Furthermore, in traditional synchronous systems, distance protection on the weak-feed side is already sensitive to transition resistance; in new energy transmission lines, the controlled fault-current angle



Contact Us

For datasheets, pricing, or custom telecom energy solutions, please visit:
<https://koskolong.co.za>