



Adam Tas Corridor Energy

Weight of Wall-Mounted Distribution Box





Weight of Wall-Mounted Distribution Box



The installation requirements for the distribution box

Learn how to install a distribution box safely and correctly. Covers wiring, placement, standards, and expert tips for a compliant setup.

Distribution boxes wall mounted plastic

PCE specialises in the production of CEE industrial plugs and sockets, earthing contact plugs and sockets and supplies a complete range of rubber, metal and plastic distribution boxes.

OEM/ODM
CUSTOMIZATION AVAILABLE



Ordering information

NO.	1	2	3	4
Model	P2001	P1802	P112013	P111014
Product name	Patch Panel	Patch Panel	Patch Panel	Patch Panel
Illustration				
RU	1	2	3	4
Maximum number of cores	96	192	288	384
Product size (including modules and adapters)	482.0*206.7*43.3mm	482.0*206.7*86.6mm	482.0*206.7*129.9mm	482.0*206.7*173.2mm
Standard color code	RAL3005	RAL3005	RAL3005	RAL3005

Distribution Boards & Consumer Units

Distribution boards, together with modular ABB system pro M Compact protection devices and Modular Din Rail Components, can be used for many applications in electrical building installation. Solutions

Distribution boards components

Service cable ducts or conduits, surface mounted or in cable chases embedded in the wall Note: to facilitate future modifications to the installation,



it is recommended to keep all relevant



Length:39.5mm
Small-end inner diameter:2.0mm
Large-end inner diameter:5.0mm
Outer diameter:5.65mm/6.5mm

MNS® Low Voltage Distribution Board and Power Cabinet

Features ABB distribution board and power Cabinet conform to GB7251.3-2006. Product includes distribution board, lighting control panel, metering panel, and power cabinet., They are suitable for

Power Distribution Catalogue

Wall Mounted Enclosures The design of wall mounted enclosures within the nVent HOFFMAN Power System range, referred to as EPS, is based on the existing mild steel wall mounted enclosure MAS,



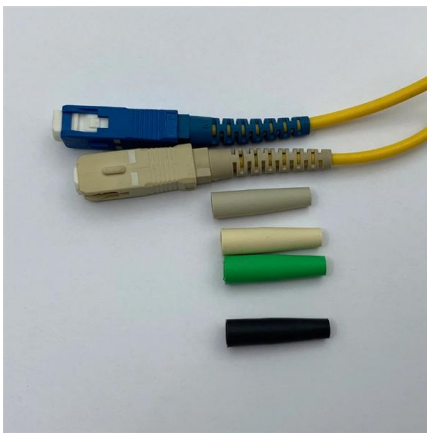
Wallmount Enclosure Technical Guide

With its coordinated enclosure, power distribution and climate control technology, the modular system from Rittal provides quick and flexible solutions for any challenge anywhere in the world.



Datasheet POR 48 Wall-mounted Optical Distribution Box

Wall mounted fiber optical box is designed for the placement of up to 48 optical connectors indoor. Optical cables can be lead in/out from upside or downsite. Adapters plate is selectable and splicing



WALL MOUNTED CABLE DISTRIBUTION CABINET

The wall mounted distribution cabinets are designed for easy installation. The metal bars can accommodate either connection or disconnection modules. The Cable glands in various sizes and

TECHNICAL SPECIFICATION FOR LT DISTRIBUTION BOX

KV 1. DESCRIPTION OF MATERIALS:- The L.T. Distribution Cabinets shall be installed on D.P. Structure for Plinth Mounted 33/.4 KV Substation of the ratings indicated above. These Distribution



electric distribution board , Wall Mount Metal Box

Junon is a manufacturer with electric distribution board.We provide Wall Mount Metal Box.You can browse related products and initiate consultations on our website.



Understanding Distribution Boxes: Your Guide to Power

Wall-Mounted Distribution Boxes As previously mentioned, these are compact units typically mounted onto walls and used for storing circuit breakers



Medium Distribution Wall Box (MDWB)

The Medium Distribution Wall Box is a wall mounted splice box used for the distribution of fibres to customer drop cables. The unit has a capacity of up to 168 fibre splices and can accommodate input



Fiber Distribution Box

Available for the small capacity communication system and wall mounting. The cabinet is composed of two parts: one links with optical cables for fusion connection between optical cable and fiber pigtail,



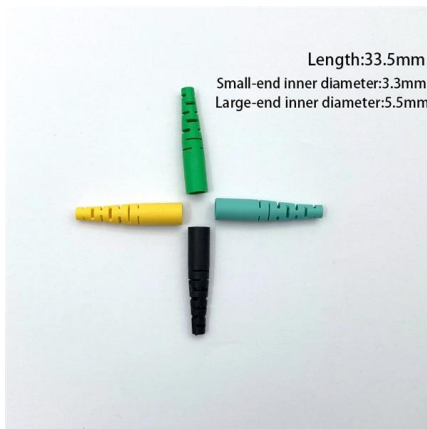


ABC Service Box

Pole or wall mounted distribution boxes for aerial bundled conductors. Used in end of line applications where only a single phase and neutral are distributed. Note: The equipment described in this data

WALL MOUNTED CABLE DISTRIBUTION CABINET

Equipped with document wallet for storing system information. Fully lockable door protects unauthorized access. Available in different sizes.



Distribution Boards & Consumer Units

Mini Center Compact is a reliable range of distribution boards allowing maximum flexibility, offering wide choice of incomers: Switch Disconnector, MCCB, MCB, RCCB, RCD or Direct Cable Connection.

Wall-Mounted vs Floor-Mounted Distribution Boxes

With common dimensions of 1910x600x250mm and weight capacities of up to 800kg, these enclosures have much bigger interior volumes.



Elitco

Description Type: Wall Mounted Distribution Box
Solid Rubber Description: 1xM25 threaded cable gland on the top (cable diameter 13-18mm. PG21) black 1xM20 threaded cable gland on the top (cable



Distribution boxes wall mounted plastic

9028738 Distribution box plastic wall mounted S? Details Distribution box plastic wall mounted Sölden BV 32/5 2x16/5 6xSSD M32ÖoBVu Ea 2x16A5p400V 1x32A5p400V 6 Overcurrent switch Earth



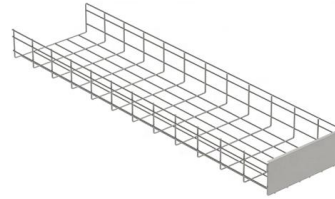
Size determination, installation method and wiring mode

The distribution box is the central hub of the home circuit and the general control of our daily power consumption. It is an indispensable electrical equipment. If there



brennenstuhl® , Licht

Hier sollte eine Beschreibung angezeigt werden, diese Seite lässt dies jedoch nicht zu.

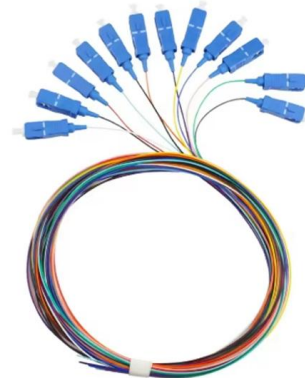


Distribution Box

Plastic Electrical Box, also known as a consumer control unit or electricity control unit. It is a device that is a type of distribution board that helps in protecting

Metal electrical distribution box IP65 for wall mounting 400x300x200mm

Specifications Size (height x width x depth): 400 x 300 x 200 mm. Distribution box made of 1.2mm thick steel. Painted in gray RAL 7035. It has a quarter turn closure. A key is supplied. 2mm thick



Contact Us

For datasheets, pricing, or custom telecom energy solutions, please visit:
<https://koskolong.co.za>