



**Adam Tas Corridor Energy**

# **What aspects of cable trays should be considered**





## Overview

---

What factors should be considered when selecting a cable tray?

Factors include the number, diameter, and weight of cables, the tray's load capacity, installation space, environmental factors (e. maintain spacing or to keep cables in place when the tray is ect the minimum bend ra-dius for cables as they exit the bottom of the cable tray. Below are 100 questions that comprehensively cover the basic definitions, material classifications, selection principles, load capacities, installation methods, fire protection requirements, corrosion treatments, and wiring techniques of cable trays, aimed at providing a detailed and comprehensive. Cable tray systems are engineered support structures designed to route, support, and protect insulated electrical cables used for power distribution, control, instrumentation, and communication. Selecting the right cable tray is essential for safety, efficiency, and compliance with industry standards. In this guide, we explain what cable trays are, the main types available, how to choose the correct size and duty rating, and what to consider when designing a cable tray installation.



## What aspects of cable trays should be considered

---



### Cable Tray Technical Guide A practical guide to product selection and

**SOLID-BOTTOM CABLE TRAY** Providing additional cable protection, solid-bottom cable tray is sometimes preferred to support and protect numerous small instrumentation and control cables.

### 10 Things to Consider when Selecting a Cable Tray

We want to see your next construction project succeed whether you choose Snake Tray as your partner for cable management solutions or not

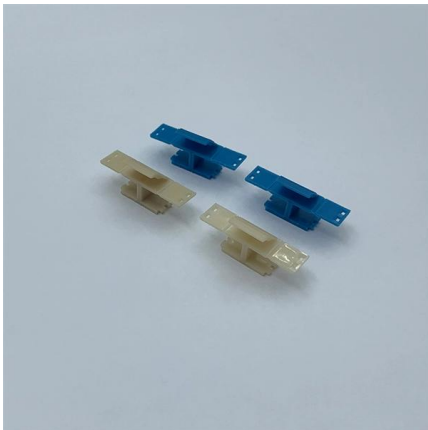


### FactSheet

**Overloading cable trays** Cable trays come in a wide variety of sizes. The appropriate size and number of cable trays depends directly on the number and size of conductors intended and the allowable fill

### Cable Trays Selection Guide: Types, Features,

Start with this definitive resource of key specifications and things to consider when



## 7 Types of Cable Trays: How to Choose the Right One

Cable tray systems are engineered support structures designed to route, support, and protect insulated electrical cables used for power distribution,

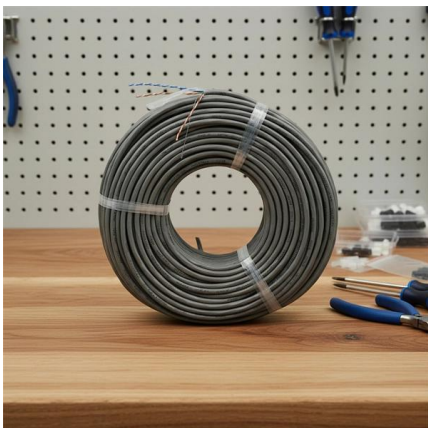
## Cable Tray Systems: Requirements and Best Practices

This article explains the main requirements and good practices for cable tray systems, including tray types, materials, loading, supports, bonding, cable selection, and installation details.

Integrated Aluminum Alloy  
Die Casting



Durable and Secure Metal Screws



## 100+ Essential Questions Answered About Cable Trays:

What factors should be considered when designing a cable tray? When designing a cable tray, factors to consider include the type, number, and



## **Cable Tray Technical Guide A practical guide to product selection and**

In designing supports for a cable tray system, consideration should be given to the loads associated with future cable additions and any additional loading that may be applied to the cable tray system (e.g.,



## **A Guide to Installing and Supporting Electrical Cable Trays**

A professional guide to installing electrical cable tray systems per NEC Article 392. Covers support, securing cables, and fill calculations.

## **Cable Pathways: A Data Center Design Guide and Best**

Cable Pathways: A Data Center Design Guide and Best Practices Cables may not be the most glamorous part of the data center, but they certainly



## **7 Types of Cable Trays: How to Choose the Right One**

Selecting the correct cable tray type is not arbitrary--it depends on a combination of cable characteristics, environmental conditions, and installation



## The Comprehensive Guide to Cable Tray Systems:

Master cable tray systems with our expert guide covering structural engineering, material selection, and NEC compliance to ensure safe, efficient,



## 10 Things to Consider when Selecting a Cable Tray

Please allow our cable tray experts to offer these bits of advice when selecting a cable tray to help guide your selection of the right cable tray for every

## How to Choose Cable Trays

Master how to choose cable trays with confidence. This complete selection guide covers load assessment, material choices, design best practices, and expert tips



## What Is A Cable Tray? 5 Types Of Cable Trays

A cable tray is a structural system used to support and manage electrical cables in various settings, such as industrial, commercial, and residential environments. It provides a pathway for safely routing



## Best Practices for Cable Tray Design

Following best practices in cable tray design is essential to ensuring the efficiency, safety, and durability of electrical and network systems. Careful

### Pre-Terminated Patch Panel

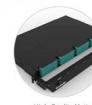
- Standard 19" width
- Max 144 fibers in 1U
- MPO/Fusion Dual-Purpose



Removable Cable Management Tray



Transparent Front Cover



High-Quality Matte Coated Steel

## Ultimate Guide to Cable Tray Selection - Types,

Learn how to choose the best cable tray system for your needs. Explore types, materials, installation tips, and NEC compliance in this expert guide.





## Ampacity of Power Cables Installed in Cable Trays

Cables installed in trays have lower ampacity than cables installed in free air or on cable ladder supports because the tray restricts airflow to the cables' bottom and

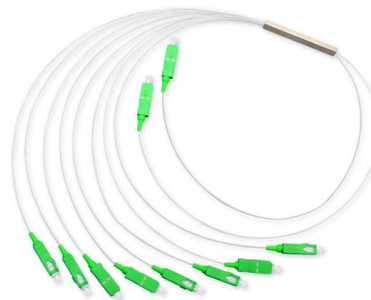


## What are Cable Trays & Different Types of Cable Trays

Learn what cable trays are & explore the various types, benefits, and purposes. Gain insights into how electrical cable trays can revolutionize your

## Do You Really Need a Cable Tray? Here's How to Decide

Factors to consider before using a cable tray  
Cable Quantity and Density The first thing to consider when deciding whether to use a cable tray is



## Cable Tray Systems Explained: The Right Solution for

Discover cable tray systems, including tray types, sizes, duty ratings and materials, and learn how to choose the right solution for safe cable management.



## Best Practice Guide to Cable Ladder and Cable Tray Systems

This guide covers cable ladder systems, cable tray systems, channel support systems and associated supports intended for the support and accommodation of cables and possibly other electrical



## Cable Trays , How it works, Application & Advantages

Explore the world of cable trays, their types, materials, benefits, standards, and installation considerations for efficient cable management.

## Contact Us

---

For datasheets, pricing, or custom telecom energy solutions, please visit:  
<https://koskolong.co.za>